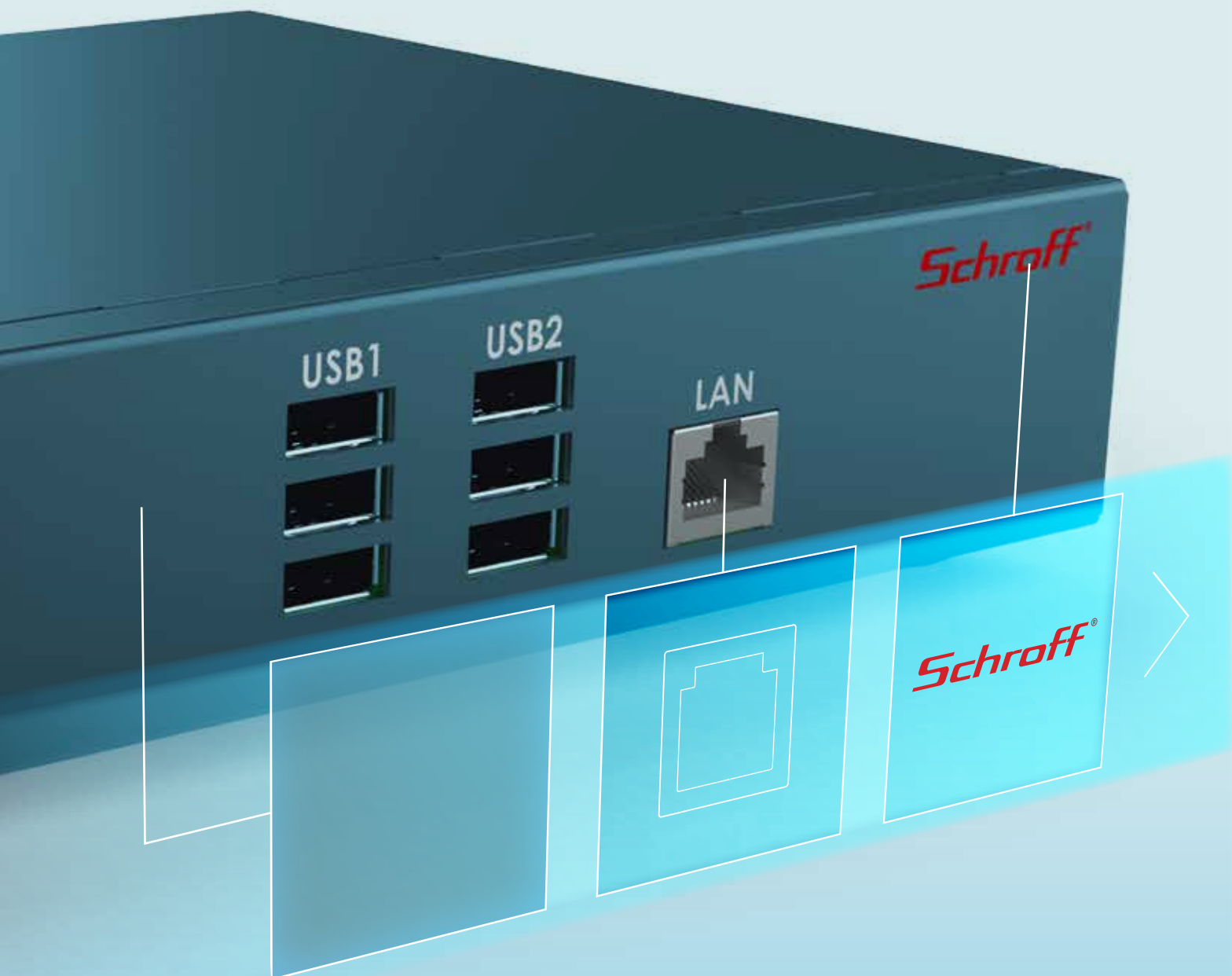


BE INSPIRED

Our practical configuration assistant helps you to adapt the Interscale M Standard case quickly and easily to your specific requirements.

Schroff Interscale M - the ideal solution for realizing your visions.



OUR LOCATIONS



EUROPE

Straubenhardt, Germany
Tel: +49.7082.794.0

Betschdorf, France
Tel: +33.3.88.90.64.90

Warsaw, Poland
Tel: +48.22.60.70.616

Hemel Hempstead, Great Britain
Tel: +44.1442.24.04.71

Skarpnäck, Sweden
Tel: +46.8.683.61.00

Pregnana Milanese, Italy
Tel: +39.02.932.714.1

Moscow, Russia
Tel: +7.495.926.18.85

NORTH AMERICA

Minneapolis, MN
Tel: +1.763.421.2240

Warwick, RI
Tel: +1.401.732.3770

San Diego, CA
Tel: +1.858.740.2400

Radford, VA
Tel: +1.540.639.4440

Mexico City DF
Tel: +52.55.5280.1449

Toronto, Canada
Tel: +1.416.289.2770

MIDDLE EAST & AFRICA

Dubai, United Arab Emirates
Tel: +971.4.37.81.700

ASIA

Shanghai, P.R. China
Tel: +86.21.2412.6943

Qingdao, P.R. China
Tel: +86.532.8771.6101

Bangalore, India
Tel: +91.80.6715.2000

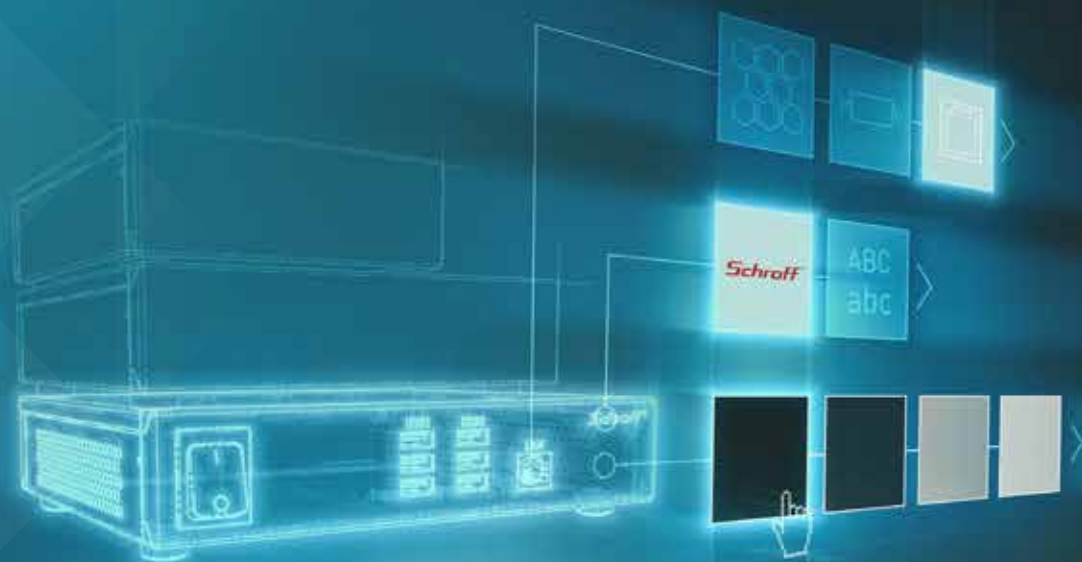
Singapore
Tel: +65.679.52213

Shin-Yokohama, Japan
Tel: +81.45.476.0271



Langenalber Str. 96-100
D-75334 Straubenhardt

For further information visit:
SCHROFF.BIZ/INTERSCALEM



Schroff

INTERSCALE M THE FORM FACTOR FOR THE FUTURE

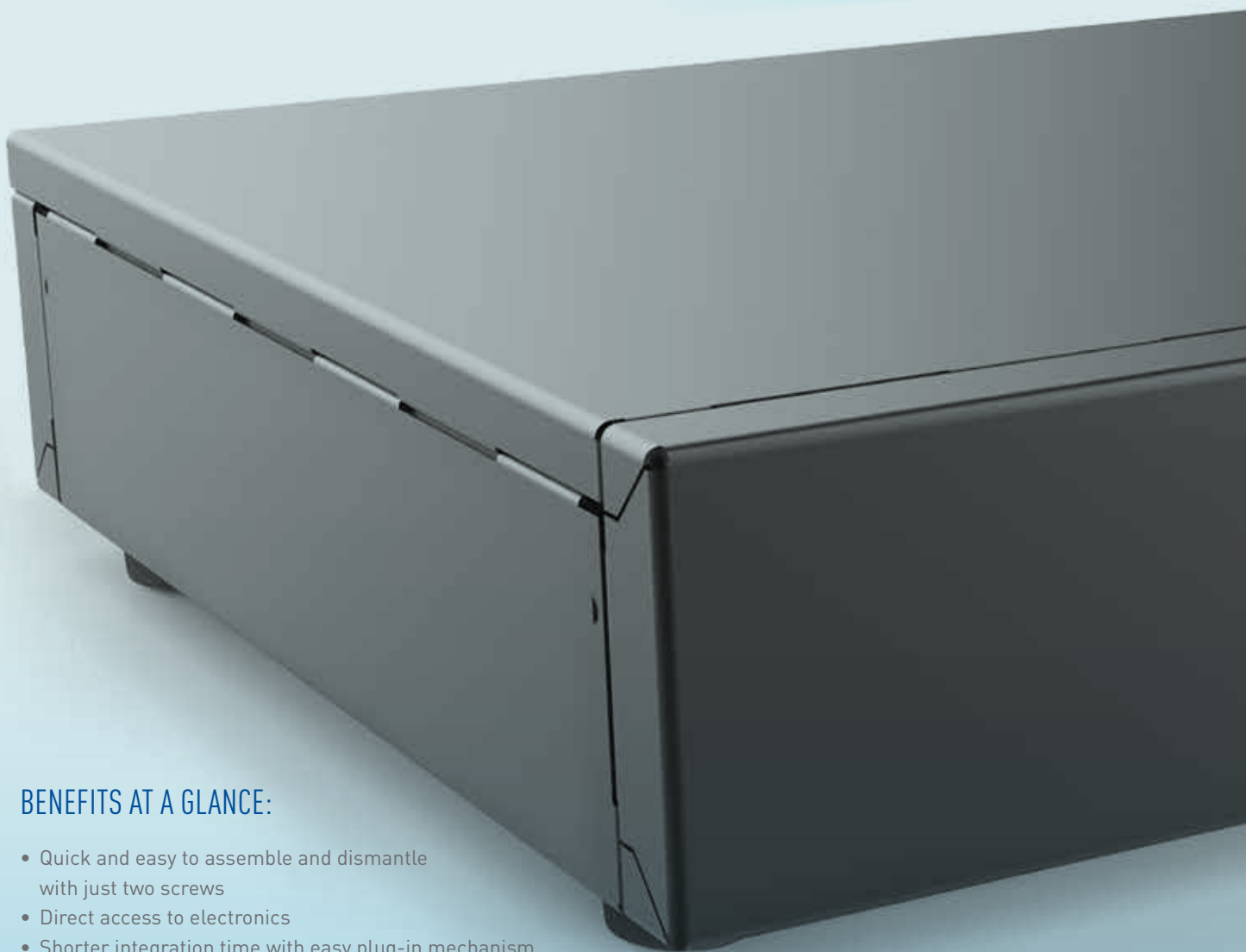
VERSATILE AND COST-EFFECTIVE

that is the motto of Schroff Interscale M Standard.

You have the idea and we have the building blocks to make it a reality. Build upon a basic platform with your choice of Schroff Interscale M standard cases with heights of 1, 2 or 3 U and various widths and depths.

Along with a wide palette of standard accessories, such as flexible PCB stand offs, various plug-in feet, fans and mounting components, you can choose from a variety of options included in off-the-shelf products. These options ensure greater cost control and reduce time to market.

Schroff Interscale M is ideally suited to classic form factors such as ATX, Micro ATX, Flex ATX, Mini ATX/ITX boards, computer on module - or your own individual board format.



BENEFITS AT A GLANCE:

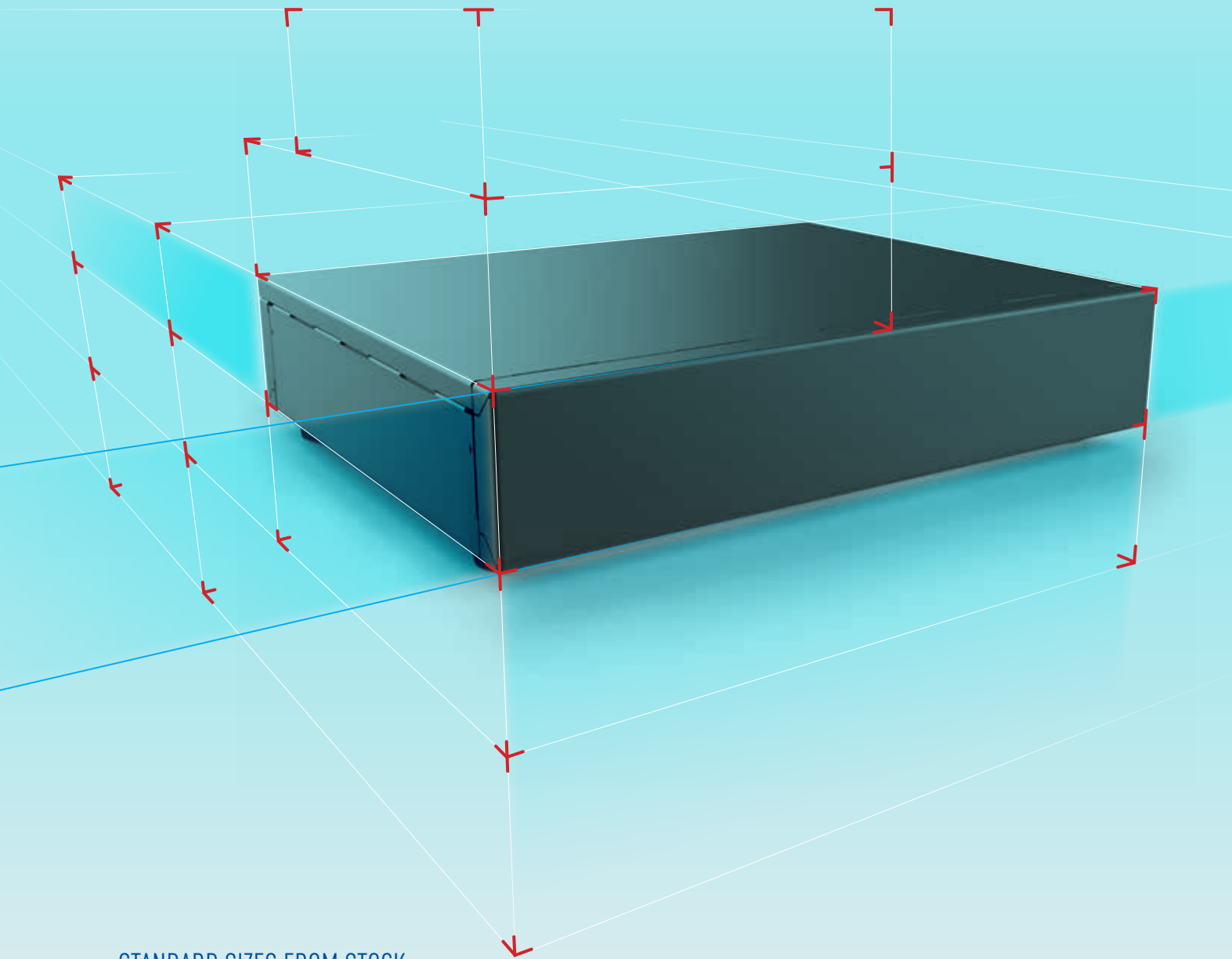
- Quick and easy to assemble and dismantle with just two screws
- Direct access to electronics
- Shorter integration time with easy plug-in mechanism and optimized accessories
- Integrated EMC protection

Schroff®

ELECTRONICS PROTECTION

A STEP-BY-STEP PROCESS TO A COMPLETE STANDARD CASE

You can put together a complete case for your electronics in just four steps.
Why not try it out? It's never been so easy to develop the right case to meet your needs.



STANDARD SIZES FROM STOCK

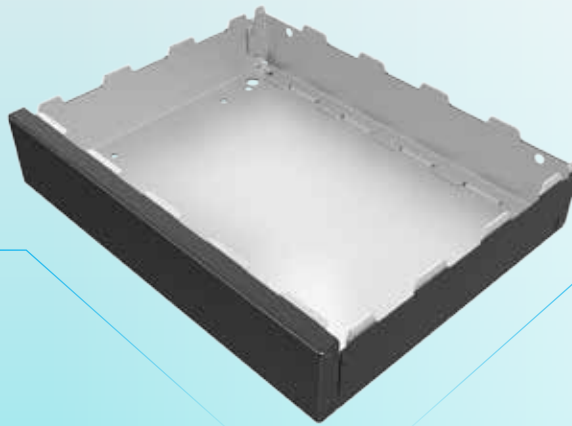
44H x 133W x 133D	44H / 88H x 221W x 221D*	44H / 88H / 133H x 399W x 310D*
44H x 133W x 177D	44H / 88H / 133H x 310W x 221D*	1U / 2U / 3U x 19" x 221D*
44H / 88H x 221W x 177D*	44H / 88H / 133H x 399W x 221D*	1U / 2U / 3U x 19" x 310D*

*Also available in perforated version. Matching fan kit available as accessory. Dimensions in mm.

Schroff®

SPECIFY...

19" rack bracket

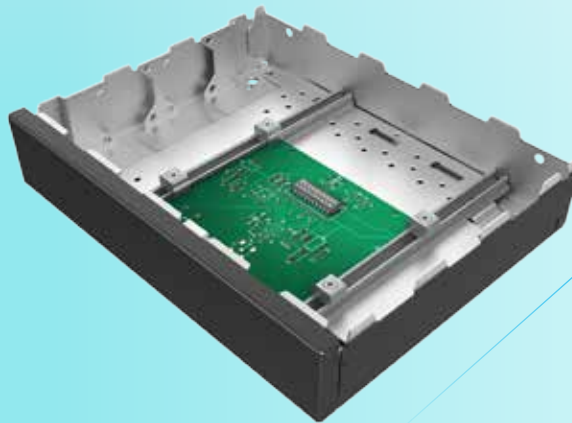


CASE SIZE

The standard range offers 21 case sizes for a wide range of applications with either perforated side panels for cooling or with solid sides.

Case mounting options:

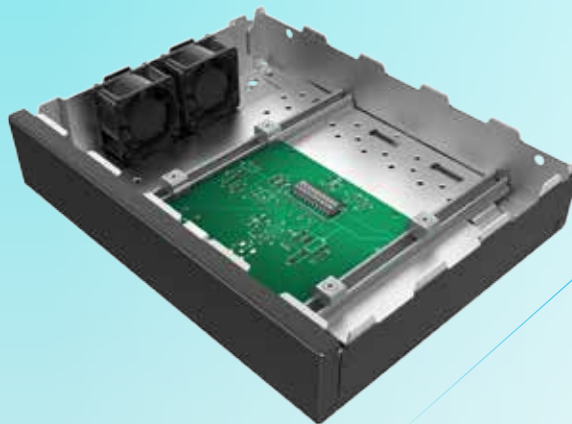
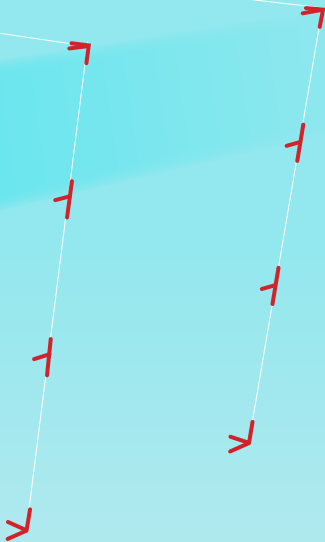
- DIN rail adapters
- 19" version with integrated brackets



PCB MOUNTING ACCESSORIES

Easy integration of PCBs with:

- Mounting plate
- Flexible rail system ideal for prototyping
- Plastic studs used for prototypes
- Metal pressed-in studs for used in production runs

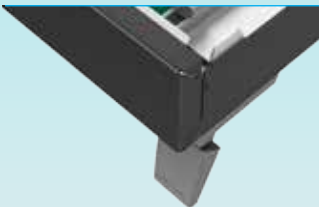


COOLING ACCESSORIES

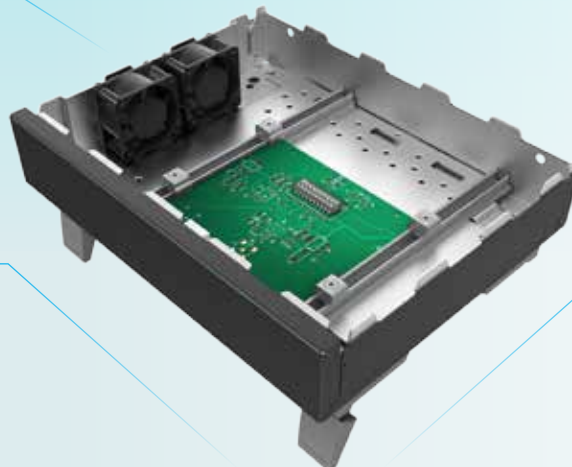
Complete cooling kit for each of the 19 standard perforated case sizes:

- Mounting plate with integrated fan adapter
- Solo fan adapter

Tip-up feet



Tip-up feet with stacking aid



FEET

- Plastic tip-up feet
- Plastic tip-up feet plus stacking function
- Stacking aid

MODIFICATIONS

Want to expand on a basic concept?

Our configuration assistant helps you to adapt a standard case quickly and easily to your specific requirements.

Modification options such as colors, cut-outs and printing can be conveniently selected to help you bring your ideas quickly to realization.

COLORS

Match your case to its surroundings with the right color.

PRINTING

Add your logo and custom printing to the case.

CUT-OUTS

Design the front and rear panels with the cut-out toolbox.



OVERVIEW

The innovative case design of the Schroff Interscale M inspires and supports you in realizing your ideas - from initial prototypes through to series production.

The intelligent platform and extensive accessories let you create optimized case solutions quickly and easily and adapt them flexibly to suit specific requirements. You also have the choice between making such adaptations yourself or with our support.



INTERSCALE M – STANDARD

- 21 standard sizes with no perforations; 19 sizes with perforations
- Standard color RAL7016
- Fast delivery within 48 hours

BENEFITS

- Free access to 3D STEP drawings, user manuals and test reports
- Integrated EMC protection of approx. 20 dB at 2 GHz
- Ideal for in-house prototype development
- Extensive range of accessories for diverse applications



INTERSCALE M – MODIFIED (ONLINE CONFIGURATOR)

Create your individual case using our online configurator. This will guide you quickly and efficiently through the modification process.

- Choice of 6 RAL colors
- Flat-fee for cut-outs on front and rear panels
- Round hole, rectangular and Sub-D cut-outs available
- Color printing on front and rear (text, logo printing)
- The practical online configurator is an ideal assistant for developing prototypes quickly and simply

BENEFIT

- Quick quotation and production for cost-effective prototyping



INTERSCALE M – CUSTOMIZED

Complete flexibility of case size, which can be matched exactly to your requirements. All modular components can be easily individualized with

- any case sizes
- any color
- any type of cut-outs
- text/logo printing
- mechanical adaption (e.g. pressed-in studs)
- customized accessories

BENEFIT

- Ideal for cost-effective production runs with individual touch