



Quick Start



Watch 5 Minutes to groov
op22.co/5min2groov

Open →

1 Unpack the *groov* Box

You need:

- A computer with a modern web browser on the same network you'll use for the *groov* Box. For the best user experience, we recommend Chrome or Firefox.
- A PAC S-series, PAC R-series, or SoftPAC controller running a strategy with firmware R9.2a or newer, and a strategy developed in Opto 22's PAC Control. The controller should be on the same network as your computer. The network should have DHCP & DNS.

In the box...



2 Get to know the *groov* Box

To set up the *groov* Box, you'll use the *groov* Box components shown below. Make sure there is room around the front, top, and sides of the *groov* Box to allow air to flow freely through the fans on the sides. Also, you need to be able to see the information on the top.



3 Connect to the network



Connect ETH0 to your computer's network.

If you have a separate control network, see the *groov* Box User's Guide.

4 Connect the power supply

Plug the small connector on the power supply into the terminal marked 14–36 VDC. Plug the other end into a standard 120 or 240 VAC outlet. The LED marked PWR will light solid green.



6 Open *groov* in your web browser

- On your computer, open Firefox or Chrome.
- Enter `https://` and your *groov* Box's hostname as the URL. The hostname is printed on top of the *groov* Box. For example, if the hostname is `opto-01-ab-c2`, you type `https://opto-01-ab-c2`.
- Accept the security warning. Your *groov* data is protected by the SSL (secure socket layer) 256-bit encryption, so you can safely accept the warning.

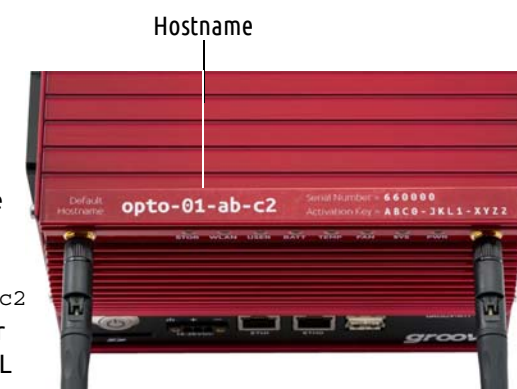
For Chrome: Click "Proceed anyway."

For Firefox:

- Expand "I Understand the Risks."
- Click Add Exception to open the Add Security Exception dialog box.
- Select "Permanently store this exception."
- Click Confirm Security Exception.

The **Welcome to groov** window opens in your web browser.

NOTE: If the **Welcome to groov** window does not open, your network configuration is probably unique. Please see the *groov* Box User's Guide.



5 Turn on the *groov* Box

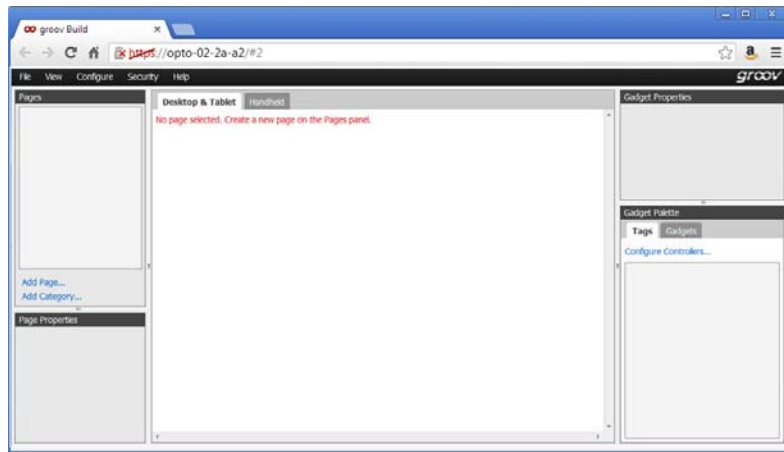
Briefly press and release the On/Off button. Wait until the SYS LED has stopped blinking and is solid green. Also, take a look at the LNK ACT light for ETH0. If the cable is properly connected, the LNK ACT light should be on or blinking.

7 Create new usernames and passwords

Follow the on-screen instructions to create usernames and passwords for *groov* Admin and for *groov* Build. The security warning will appear once more; when it does, accept the warning again.

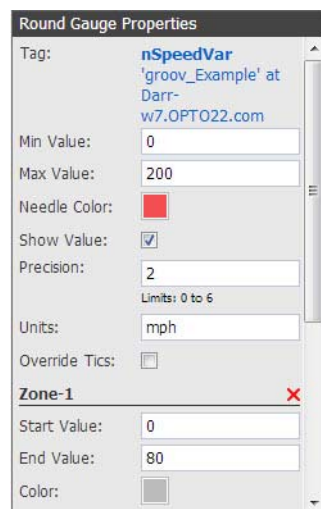
CAUTION: Write down your Username and Password, and keep it in a safe place. You will need this information each time you log in. If you lose your login information, you will have to reset the *groov* Box back to factory defaults which will erase your project. There is no password recovery option.

After you have completed the instructions in **Welcome to *groov***, *groov* Build opens in your web browser.



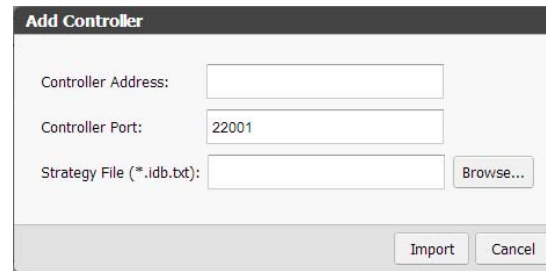
9 (continued)

- In the upper right corner, configure the Round Gauge properties. To add a zone, click the Add Zone button. Choose the Min Value, Max Value, and Units that make sense for your variable.
- Select File > Save All and Switch to *groov* View. You should now see the Round Gauge running in View. The needle shows the tag's current value.



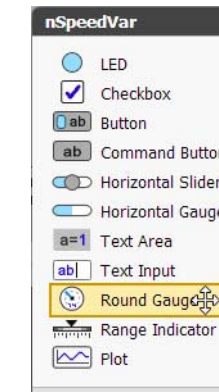
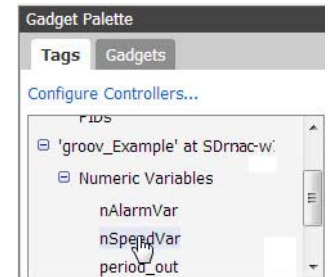
8 Get your tag database

- In Build, select select Configure > Controllers.
- Click Add Controller.
- Enter the IP address of a PAC S, PAC R, or SoftPAC controller running a strategy you would like to use.
- Click Browse to locate the **idb.txt** file for your strategy. The **.idb.txt** file resides in the strategy's directory. It's created when the strategy is compiled.
- Highlight the **idb.txt** file, click Open, and then click Import. Build imports the **.idb.txt** file with the strategy's tags.
- Close the Configure Controllers dialog box.



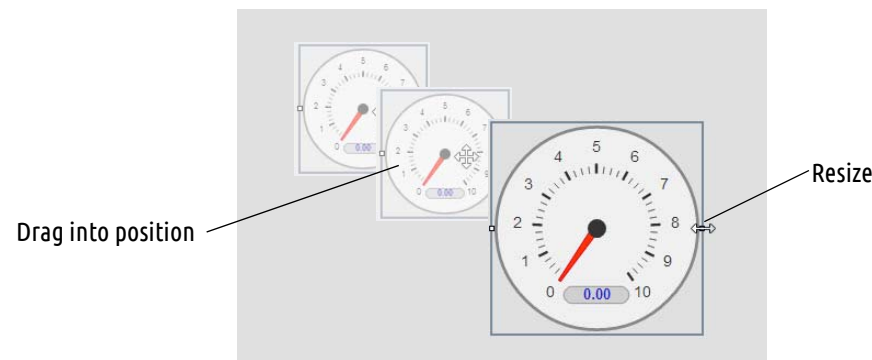
9 Build your operator interface

- Click Add Page on the left side under Pages.
- Type a new name for the page, then click OK.
- With the Tags tab selected in Gadget Palette, click the plus sign next to the strategy name to expand the list of tags.
- Click a Numeric Variable tag that changes its value frequently.
- In the pop-up dialog box, double-click a Round Gauge.



10 Adjust the handheld layout

- Click the gear symbol in the upper-right corner of View, and select Switch to *groov* Build.
- Add several more tags and gadgets to your project, and arrange them in the Desktop & Tablet view.
- Click the Handheld tab at the top of the work area. You'll notice that the gadgets are arranged differently in the Handheld view, but they contain exactly the same gadgets, tags, and properties.
- Drag each gadget into position, and resize it as necessary for the Handheld view.



- Switch to the Desktop & Tablet layout. You'll notice that arranging the gadgets in the Handheld layout does not affect the Desktop & Tablet layout.

11 The last word

Activating the *groov* Box and getting updates: Before continuing with your project, make sure to activate your *groov* Box. This is required to take advantage of important updates from Opto 22. You'll need the activation key that's on the top of the *groov* Box. Go to activate.groov.com. To get updates at any time, go to manage.groov.com. For update instructions, see the *groov* Box *User's Guide* on the *groov* Box CD.

Backing up your project: As you work on your project, make sure to back up frequently in *groov* Build. For more information, see the *groov* *User's Guide*.

