



## Highlights

- **NEW!** Available in plastic bezel, metallic padlock, flush bezel
- **NEW!** Install up to 20 padlocks (XN4E)
- **NEW!** 40mm and 60mm mushroom heads (XN1E)
- **NEW!** Flush bezel only 21mm from front of panel
- **NEW!** Only 47.7mm depth behind the panel for up to 4 contacts (XN1E)
- **Push ON LED allows E-Stops to be illuminated when latched**
- **Unique "Safe Break Action"**
- **Direct Opening Action (IEC60947-5-5, 5.2, IEC60947-5-1, Annex-K)**
- **Safety Lock mechanism (IEC60947-5-5, 6.2)**
- **Push-to-lock, pull/turn-to-reset built into one switch**
- **Gold-plated silver contacts**
- **RoHS compliant, lead-free design, UL-listed, cUL, TUV, CE**
- **See back page for part numbers and pricing**
- **Datasheet available on ILC (part #XS9Y-DS100-0) or for additional information visit [www.idec.com/usa/estop](http://www.idec.com/usa/estop)**
- **Launch kit will be available at [www.idec.com/distributor](http://www.idec.com/distributor) after June 20**



## 30mm XN E-stops are so safe even maintenance departments are smiling!

IDEC now offers a new series of E-stops that provide an even higher level of function and safety to customers. These 30mm XN E-stops are the first and only with exciting, new technology to make their machines even safer.

Features include our unique "Safe Break Action," which ensures NC contacts will open if the contact block is damaged or separated from the operator due to excessive force. Direct Opening Action ensures that even if the contacts are welded, the force applied on the button will directly open the contact. And a

Safety Interlock Mechanism keeps contacts open when the operator is locked.

Inspired by the lockout concept, the new XN series of padlock-type E-stops were developed to prevent unauthorized or accidental resetting of latched emergency stop switches, by allowing the use of up to 20 personal padlocks\*.

XN1E series E-stops save space behind the panel with depths of only 47.7mm for up to four contacts. And XN5E series E-stops only extend 21mm from the front of the panel, ideal for applications needing a low-profile design.

### Safety Standards

All XN series E-Stops are RoHS compliant, UL-listed, c-UL, TUV and CE marked. The XN4E series meets additional safety standards including **OSHA** and **ISO 12100-2:2003**. OSHA (Occupational Safety & Health Administration, U.S. Department of Labor) requires that where the unexpected energization or start-up of equipment could cause injury to operators, the machine or equipment is stopped, isolated from all potentially hazardous energy sources and locked out before employees perform any servicing or maintenance.

ISO 12100-2: 2003 also requires that risks be reduced to the lowest allowable level by taking protective measures in order of inherently safe design, safeguarding, and complementary protective measures. Locking out the energy isolation devices is one of complementary protective measures.

For additional information, please contact IDEC Corporation at 1-800-262-IDEC (4332) or visit [www.idec.com/usa](http://www.idec.com/usa).

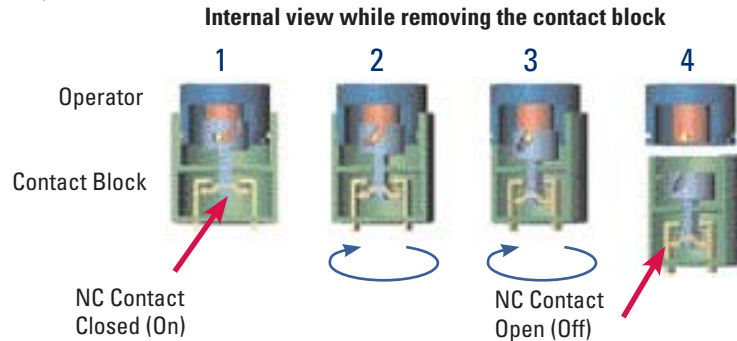
\*Padlocks and hasps sold separately.

## Key Features

### Safe Break Action

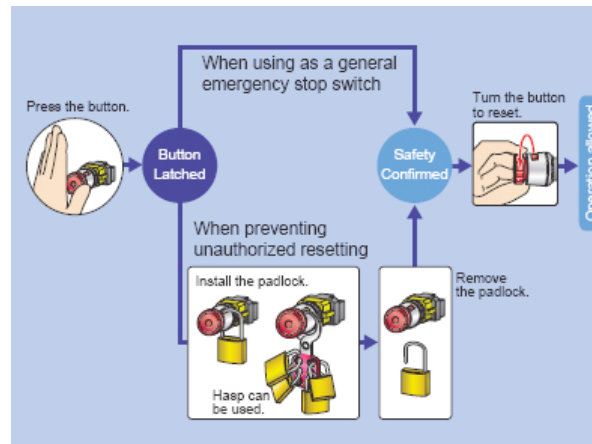
Conventional E-Stop switches are designed with spring pressure on the Normally Closed (NC) contacts, keeping them in the closed position and allowing the machine to operate. Improper installation or excessive force to the stop button in an emergency may break or dislodge a vital part, causing the spring loaded contact to stay closed. This situation renders the E-Stop incapable of stopping the machine and can lead to catastrophic events, personal injury and possible loss of life.

However, our one-of-a-kind "safe break action" design reverses the energy direction and uses the spring-pressure to assure that the NC contacts will open if the emergency switch is damaged or the contact blocks separate due to excessive force. The NC contacts will reliably open, even if they are welded, and stop the machine.



### Padlock E-Stops

As shown in the diagram, upon latching a traditional E-stop, it is up to the technician to verify and confirm that the machine area is clear and there are no other technicians working before resetting the E-stop and turning on the machine. There is always a chance that the technician might miss someone in the work area before resetting the E-stop, potentially causing injury to that person.



The solution is XN4E series padlock E-Stops, which allow technicians to install their personal padlocks on the E-stop ensuring their own safety. The diagram shows how personal padlocks can be installed. Each one blocks the resetting of the E-stop until all the padlocks are removed. This provides added safety and prevents unauthorized or accidental resetting of the E-stops. A maximum of 20 padlocks can be installed by using lockout hasps.

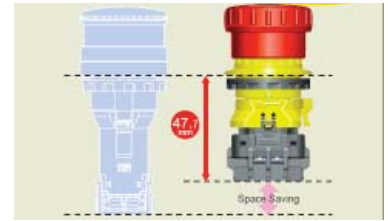
XN4E series E-Stops have metallic bezels and also come in illuminated versions, thereby enhancing their visibility when viewed from a distance. IDEC also offers a Push ON LED version, which allow the E-stop to be illuminated only in latched position. This increases the visibility and a technician can easily determine if the E-stops is in a latched or unlatched position.

The picture to the right shows how padlocks can be installed using a lockout hasp.



### Compact Size

The XN Series of E-Stops has a shorter depth behind the panel saving valuable space for customers. In fact, XN1E Series E-stops only have a depth of 47.7mm for up to 4-contacts compared to conventional emergency stops.



### Selling Strategies

Products that demonstrate innovation and increased levels of safety (i.e. decrease the chance of worker injury or even tragedy on the job), are of great interest to machine tool manufacturers. That's why IDEC now offers a new class of 30mm E-stops, explicitly designed to help OEMs improve the safety of their machines.

Padlock-type (XN4E Series) E-stops allow maintenance technicians to install their personal padlocks on the E-stops by using a lockout hasp; preventing accidental or unauthorized resetting of the Emergency Stop. Technicians can install up to 20 padlocks on a switch by using lockout hasps.

Coupled with our innovative "Safe Break Action" technology, XN Series E-stops provide a unique safety solution no other manufacturer can.



### Competition

IDEC XN Series of E-stops have no equivalent competitors in the world! Any traditional 30mm E-Stop can be replaced with an XN Series E-stop to provide additional safety and sense of security.

### Upgradeable Competitor Product Series



Brand	Series
Allen Bradley	800T-FX, 800T-FXT, 800T-FRXT, 800T-FXQM, 800T-FXQNT, 800T-FRXTQH
Cutler Hammer	10205T5, 10205TA
Square D	KR9, SKR9
EAO	Series 4, Series 44
Automation Direct	HT8CBRAB
Fuji	AR30Q2R, AR30V2R, AR30V2L
GE	CR104PBL, CR104PBT, CR104PTR, CR104PBM

### XN1E 30mm Plastic Bezel Type E-Stops



Illumination	Operator Type	NC Main Contact	NO Monitor Contact	Part Number	List Price (MSRP)
Non-Illuminated 	40mm Mushroom	2NC	-	XN1E-BV402MR	\$73.00
		4NC	-	XN1E-BV404MR	\$93.00
		1NC	1NO	XN1E-BV411MR	\$73.00
		3NC	1NO	XN1E-BV413MR	\$93.00
		2NC	2NO	XN1E-BV422MR	\$93.00
	60mm Mushroom	2NC	-	XN1E-BV502MR	\$80.00
		4NC	-	XN1E-BV504MR	\$100.00
		1NC	1NO	XN1E-BV511MR	\$80.00
		3NC	1NO	XN1E-BV513MR	\$100.00
		2NC	2NO	XN1E-BV522MR	\$100.00
Illuminated 	40mm Mushroom LED (24V AC/DC)	2NC	-	XN1E-LV402Q4MR	\$96.00
		4NC	-	XN1E-LV404Q4MR	\$116.00
		1NC	1NO	XN1E-LV411Q4MR	\$96.00
		3NC	1NO	XN1E-LV413Q4MR	\$116.00
		2NC	2NO	XN1E-LV422Q4MR	\$116.00
	40mm Mushroom Push-ON LED (24V AC/DC)	2NC	1NO	XN1E-TV412Q4MR	\$126.00



### XN4E 30mm Padlock Type E-Stops

Illumination	Operator Type	NC Main Contact	NO Monitor Contact	Part Number	List Price (MSRP)
Non-Illuminated 	44mm Mushroom	2NC	-	XN4E-BL402MR	\$120.00
		4NC	-	XN4E-BL404MR	\$140.00
		1NC	1NO	XN4E-BL411MR	\$120.00
		3NC	1NO	XN4E-BL413MR	\$140.00
		2NC	2NO	XN4E-BL422MR	\$140.00
Illuminated 	44mm Mushroom LED (24V AC/DC)	2NC	-	XN4E-LL402Q4MR	\$143.00
		4NC	-	XN4E-LL404Q4MR	\$163.00
		1NC	1NO	XN4E-LL411Q4MR	\$143.00
		3NC	1NO	XN4E-LL413Q4MR	\$163.00
		2NC	2NO	XN4E-LL422Q4MR	\$163.00
	44mm Mushroom Push-ON LED (24V AC/DC)	2NC	1NO	XN4E-TL412Q4MR	\$173.00

### XN5E 30mm Flush Bezel Type E-Stops

Operator	Illumination	NC Main Contact	NO Monitor Contact	Part Number	List Price (MSRP)
Non-Illuminated 	40mm Mushroom	2NC	-	XN5E-BV402MR	\$78.00
		4NC	-	XN5E-BV404MR	\$98.00
		1NC	1NO	XN5E-BV411MR	\$78.00
		3NC	1NO	XN5E-BV413MR	\$98.00
		2NC	2NO	XN5E-BV422MR	\$98.00
Illuminated 	40mm Mushroom LED (24V AC/DC)	2NC	-	XN5E-LV402Q4MR	\$98.00
		4NC	-	XN5E-LV404Q4MR	\$128.00
		1NC	1NO	XN5E-LV411Q4MR	\$98.00
		3NC	1NO	XN5E-LV413Q4MR	\$128.00
		2NC	2NO	XN5E-LV422Q4MR	\$128.00
	40mm Mushroom Push-ON LED (24V AC/DC)	2NC	1NO	XN5E-TV412Q4MR	\$138.00

### XN Series Accessories

Description	Part Number	List Price (MSRP)
Terminal cover	XW9Z-VL2M	\$4.00
IP20 fingersafe terminal cover	XW9Z-VL2MF	\$4.00
Locking ring wrench	XN9Z-T1	\$45.00
Locking ring twist wrench	TWST-T1	\$6.00
Lockout hasp	XN9Z-HASP421	\$25.00

### Nameplates

Description	Type No.	Legend	List Price (MSRP)
Emergency Stop Switch Nameplate	HNAV-0	(blank)	\$6.00
	HNAV-27	"EMERGENCY STOP"	\$6.00

For more information, call IDEC at: 800-262-IDEC (4332)  
 1175 Elko Drive • Sunnyvale, CA 94089  
 Fax: (408) 745-5258 • [www.idec.com](http://www.idec.com)