



**FLUKE**  
networks®

# SOLUTIONS CATALOG



---

Products for the installation, testing,  
monitoring and analysis of enterprise  
and telecommunication networks

---



# Table of Contents

<b>Datacom Cabling</b>	
<b>Copper Cable Test Solutions</b>	
Copper Cable Test Solutions Product Comparison	4
DSX-5000 Cable Analyzer™	5
DSX-5000 Cable Analyzer Accessories	6
DTX CableAnalyzer Series	6
Copper Adapter, Accessories and Gold Support	7
DTX 10 Gig over Copper Test Solution	8
DTX CableAnalyzer Fiber Options	9
CableIQ™ Qualification Tester	10
MicroMapper™	11
MicroScanner² Cable Verifier	11
LinkWare™ Cable Test Management Software	12
LinkWare Stats™	12
IntelliTone™ Pro 200 LAN Toner and Probe	13
Pocket Toner®	14
TS®100 PRO Cable Fault Finder	15
TS®90/TS®100 Cable Fault Finder	15
<b>Fiber Testing, Troubleshooting and Certification</b>	
Fiber Testing, Troubleshooting and Certification Comparison	18
<b>Fiber Plant Charecterization and Troubleshooting (Tier 2) Fiber Certification</b>	
OptiFiber® Pro OTDR	20
Launch Fibers	20
<b>Loss/Length (Tier 1) Fiber Certification</b>	
CertiFiber® Pro	21
MultiFiber® Pro	22
DTX-EFM2	23
SimpliFiber Pro® Optical Power Meter	24
Fiber Test Kits	25
Legacy Test Reference Cords, Adapters and Mandrels	26
Fiber QuickMap™	27
Fiber OneShot™ Pro	27
<b>Fiber Inspection and Cleaning</b>	
FI-7000 FiberInspector™ Pro	28
FiberInspector™ Mini Video Microscope	29
FiberViewer™ Fiber Microscope	29
VisiFault™ Visual Fault Locator	29
Fiber Optic Cleaning Kits	30
<b>Tools and Test Kits</b>	
JackRapid™ Termination Tool	32
Impact Tools	33
Blades	34
Pro-Tool™ Kits	35
Electrical Contractor Telecom Kits	35

Modular Crimper	36
Cable Splicing Knife	36
D-Snips™	36
Electrician's Snips	36
Cable Strippers	37
Need-L-Lock™ Crimping Pliers	37
Probe Pic	37
Can Wrench	37
<b>IT Networking</b>	
<b>Test and Troubleshoot</b>	
LinkRunner™ AT Network Auto-Tester	39
OneTouch™ AT Network Assistant	40
LinkSprinter™ Network Tester	42
AirCheck™ Wi-Fi Testers	43
<b>Monitoring, Analysis and Troubleshooting</b>	
AirMagnet Spectrum ES™	45
AirMagnet Spectrum XT	45
AirMagnet VoFi Analyzer PRO	46
AirMagnet Survey	46
AirMagnet Enterprise	47
AirMagnet WiFi Analyzer PRO	47
Network Time Machine for Service Providers	48
Network Time Machine™	49
ClearSight™ Analyzer	49
OptiView® XG Network Analysis Tablet	50
Tap Solutions	52
<b>Telecommunications Providers</b>	
<b>Telephone Butt-In Test Sets</b>	
Telephone Test Set Comparison	54
TS®52 PRO LCD Test Set	55
TS®54 TDR Test Set	55
TS®30 Test Set	56
TS®22 Series Test Sets	56
TS®25D LCD Test Set	57
TS®19 Test Set	57
Modular Adapters	58
Line Cords and Clips	59
<b>Access Network Test Equipment</b>	
CopperPro™ Series II Broadband Loop Tester	61
990DSL CopperPro™ Loop Tester	62
CopperPro Terminator™ Far End Terminating Device	62
635 QuickBERT-T1 Test Set	63
Voltage Detector	63
<b>Corporate</b>	
Fluke Networks Gold Support	66



## Copper Cable Test Solutions

### Complete solutions for the installation, testing, documentation and certification of copper premises cabling

Fluke Networks’ copper verification, qualification and certification products are essential tools for installers, contractors and network technicians in today’s environment. As networks grow and change, the performance of cabling is critical to delivering services to users. New testing standards also emerge and with them come guidelines that cabling professionals must follow when installing, testing, troubleshooting, and certifying copper. Whether it is coax, 1000BASE-T or 10GBASE-T, you need to be aware of the requirements and avoid the potential pitfalls in the copper infrastructure.

Fluke Networks’ copper testing products reduce network downtime caused by flaws in the cabling or installation process. They also resolve problems in operating networks and make upgrades simpler. Intuitive user interfaces are easy to learn and understand. With precise and repeatable accuracy that have become gold standard in network testing, network professionals save time and money using Fluke Networks’ copper testing products.

<b>Copper Cable Test Solutions</b>	4
<b>Fiber Plant Characterization and Troubleshooting (Tier 2) Fiber Certification</b>	20
<b>Loss/Length (Tier 1) Fiber Certification</b>	21
<b>Fiber Testing, Troubleshooting and Certification</b>	22
<b>Fiber Inspection and Cleaning</b>	29
<b>Tools and Test Kits</b>	31





COPPER  
CERTIFICATION  
AND TESTING



	DSX-5000 CableAnalyzer™	CableIQ™ Qualification Tester	MicroScanner® Cable Verifier
Supports structured cabling warranties	✓		
Meets TIA/ISO certification standards requirements	Levels IIe, III, IIIe, Level IV, and draft Level V.		
Provides pass/fail results	9.9 second Cat 6A		
Documents test results	✓	✓	
Qualifies cabling speed (10/100/VoIP/Gig)		✓	
Advanced troubleshooting: HDTDX, HDTDR, AxTalk	✓		
Troubleshoots distance to connection fault	✓	✓	
Basic troubleshooting: distance to break or short	✓	✓	✓
Continuity and wiremap	✓	✓	✓



DSX-5000 CableAnalyzer™

The DSX-5000 CableAnalyzer improves the efficiency of copper certification with unmatched speed for testing Cat 6A and Class F\* while meeting draft IEC Level V—the most stringent accuracy requirement. The ProjX Management System ensures jobs are done correctly the first time and helps track progress from set-up to systems acceptance. Taptive user interface troubleshoots faults faster by graphically indicating the source of failures including crosstalk, return loss, and shield faults. Analyze test results and create professional test reports using LinkWare™ Cable Test Management Software.

Fluke Networks' DSX-5000 CableAnalyzer is Intertek (ETL) Verified in accordance with the IEC 61935-1 specifications for accuracy Level IIIe, IV, and draft Level V, and in accordance with the ANSI/TIA-1152 specifications for Level IIIe.

- Versiv™ modular design supports copper certification, fiber loss, OTDR testing and Ethernet troubleshooting
- Taptive™ user interface simplifies set-up, and eliminates errors
- Analyze test results and create professional test reports using LinkWare Cable Test Management Software
- Endorsed by more than 23 cabling manufacturers worldwide
- Alien Crosstalk testing capability included

Model	Description	Gold 1YR	Gold 3YR
DSX-5000	DSX-5000 CableAnalyzer Kit for Copper Cabling Certification	GLD-DSX-5000	GLD3-DSX-5000
DSX-5000 120/GLD	Kit bundled with 1 year of Gold Support coverage (available in the United States, Europe and Japan only. Europe order: DSX-5000 INTL/GLD, Japan order: DSX-5000 AP/GLD)	Included in Bundle	
DSX-5000QI	DSX-5000 CableAnalyzer with CertiFiber Pro Quad OLTS Modules, and USB Video Inspection Probe for Copper and Fiber Loss certification	GLD-DSX-5000QI	GLD3-DSX-5000QI
DSX-5000QI 120/GLD	Kit bundled with 1 year of Gold Support coverage (available in the United States, Europe and Japan only. Europe order: DSX-5000QIINTL/GLD, Japan order: DSX-5000QI AP/GLD)	Included in Bundle	
Model	Description	Gold 1YR	Gold 3YR
DSX-5000QOI	DSX-5000 CableAnalyzer with CertiFiber Pro Quad OLTS modules, OptiFiber Pro Quad OTDR module and USB Fiber Inspection Video Probe for Copper, Fiber Loss, and OTDR certification	GLD-DSX-5000QOI	GLD3-DSX-5000QOI
DSX-5000QOI120/GLD	Kit bundled with 1 year of Gold Support coverage (available in the United States, Europe and Japan only. Europe order: DSX-5000QOIINTLGLD, Japan order: DSX-5000QOI AP/GLD)	Included in Bundle	
DSX-5000MI	DSX-5000 CableAnalyzer CertiFiber Pro Multimode MM OLTS Modules and USB Video Inspection Probe for Copper and Multimode Fiber Loss certification	GLD-DSX-5000MI	GLD3-DSX-5000MI
DSX-5000MI 120/GLD	Kit bundled with 1 year of Gold Support coverage (available in the United States, Europe and Japan only. Europe order: DSX-5000MiINTL/GLD, Japan order: DSX-5000Mi AP/GLD)	Included in Bundle	
DSX-5000NTB	DSX-5000 CableAnalyzer CertiFiber Pro Quad OLTS Modules, OptiFiber® Pro Quad OTDR Module, OneTouch AT Module, and USB Fiber Inspection Video Probe for Copper and Fiber Cabling Certification and Network troubleshooting	GLD-DSX-5000NTB	GLD3-DSX-5000NTB
DSX-5000NTB120/GLD	Kit bundled with 1 year of Gold Support coverage (available in the United States, Europe and Japan only. Europe order: DSX-5000NTB INTL/GLD, Japan order: DSX-5000NTB AP/GLD)	Included in Bundle	
DSX-ADD-R	1 Versiv Remote, (2) DSX-5000 CableAnalyzer Modules, and accessories to add DSX-5000 CableAnalyzer capability to an existing OptiFiber Pro	GLD-DSX-ADD-R	GLD3-DSX-ADD-R
DSX-CFP-Q-ADD-R	1 Versiv Remote, (2) DSX-5000 CableAnalyzer modules, (2) CertiFiber Pro Quad OLTS Modules, and accessories to add DSX-5000 CableAnalyzer and CertiFiber Pro capability to an existing OptiFiber Pro OTDR	GLD-DSX-CFP-Q-ADD-R	GLD3-DSX-CFP-Q-ADD-R
DSX-ADD	(2) DSX-5000 CableAnalyzer Modules, and accessories to add DSX-5000 capability to an existing CertiFiber Pro OLTS	GLD-DSX-ADD	GLD3-DSX-ADD



DSX 5000 Cable Analyzer Accessories

Model	Description
DSX-PLA001	DSX Universal Permanent Link Adapter
DSX-PLA004S	DSX CAT 6A/Class EA PLA Set
DSX-PLA011S	DSX TERA CAT 7A/Class FA PLA Set
DSX-CHA004S	DSX CAT 6A/Class EA CHA Set
DSX-CHA011S	DSX TERA Cat 7A/Class FA CHA Set
DSX-TERA-KIT	DSX TERA CAT 7A/Class FA PLA and CHA Kit
DSX-5000 MOD	1 GHZ DSX Replacement Module
DSX-PC5ES	DSX CAT5E Patch Cord Adapter Set
DSX-PC6S	DSX CAT6 Patch Cord Adapter Set
DSX-PC6AS	DSX CAT6A Patch Cord Adapter Set
VERSIV-M	Versiv Main Replacement
VERSIV-RU	Versiv Remote Replacement
VERSIV-TSET	Versiv Headphones
VERSIV-BATTERY	Versiv Battery
VERSIV-ACUN	Versiv Charger
VERSIV-STRP	Versiv Strap Kit
VERSIV-STND	Versiv Demo Stand



DTX CableAnalyzer Series

The DTX CableAnalyzer Series is the most used cabling certification tester- over 1 billion copper links certified to date. With over 50,000 units in use today; endorsed by over 20 cable companies worldwide the DTX Series is the industry's most used cable certifier.

- Cat 6 certification in 9 seconds
- Independently verified by ETL to meet ISO Level IV and TIA Level IIIe Accuracy requirements
- Analyze test results and create professional test reports using LinkWare Cable Test Management Software

Model	Description	Gold 1YR	Gold 3YR
DTX-1800	DTX-1800 CableAnalyzer	GLD-DTX	GLD-DTX-3YEAR
DTX-1800 120/GLD	Kit bundled with 1 Yr of Gold Support (available in the United States and Europe only. Europe order DTX-1800/GLD-EU)	Included in Bundle	
DTX-LT	CableAnalyzer Category 6 Certifier	GLD-DTX	GLD-DTX-3YEAR
DTX-ELT	CableAnalyzer Category 6 Certifier for Electrical Installers	GLD-DTX	GLD-DTX-3YEAR
DTX-ELTPRO	CableAnalyzer Category 6 Certifier for Electrical Installers with Permanent Link Adapters	GLD-DTX	GLD-DTX-3YEAR



Kits

Model	Description	Gold 1YR	Gold 3YR
DTX-1800-E	DTX-1800 with DTX Encircled Flux Multimode Fiber Modules	GLD-DTX-E	GLD3-DTX-E
DTX-1800-ES	DTX-1800 with Encircled Flux Multimode and Singlemode Fiber Modules	GLD-DTX-ES	GLD3-DTX-ES



DTX-HCSE



DTX-PC5ES



DTX-PC6S

Copper Adapter, Accessories and Gold Support

Model	Description
LinkWare	LinkWare Cable Test Management Software: Free download at <a href="http://www.flukenetworks.com/linkware">www.flukenetworks.com/linkware</a>
DTX-HCSE	Hard Carrying Case—DTX Series
DTX-ACUN	AC Charger Universal
DTX-ACNA	AC Charger, North America
DTX-CASE	Standard Carrying Case—DTX Series
DTX-STRP	DTX carrying strap
DTX-SER	Serial RS-232 Cable (DB-9 to IEEE 1394)
DTX-LION	Lithium Ion Battery Pack
DTX-10GKIT	Alien Crosstalk Analyzer Kit for DTX-1800 includes: two DTX-AXTLK1 Communication Modules, Windows based DTX AxTalk Analyzer™ Software, two Cat 6A/Class EA Permanent Link Adapters (DTX-PLA002S), two Channel Adapters optimized for Alien Crosstalk measurement (DTX-CHA002AS)
DTX-AXKIT	Alien Crosstalk Analyzer Kit for DTX-1800 includes: two DTX-AXTLK1 Communication Modules, Windows based DTX AxTalk Analyzer Software, two Terminators (Common Mode and Differential Mode) and two 8-pin Couplers (CIQ-RJA)
DTX-NSM	The DTX Network Service Module plugs into the back of the main unit of the DTX tester. It performs network connectivity tests and tests Power over Ethernet according to the standards and can analyze the network port the link is connected to
DTX-COAX	DTX Coax Cable Test Adapter (2 adapters included)
DTX-PC5ES	DTX Patch Cord Test Adapter Set for Category 5e patch cords. Certifies both shielded and unshielded category 5e patch cords per ANSI/TIA 568-C and ISO 11801:2010
DTX-PC6S	DTX Patch Cord Test Adapter Set for Category 6 patch cords. Certifies both shielded and unshielded category 6 patch cords per ANSI/TIA 568-C and ISO 11801:2010
DTX-PC6AS	DTX Patch Cord Test Adapter Set for Category 6A patch cords. Certifies both shielded and unshielded category 6A patch cords per ISO 11801:2010
DTX-PCTAC5EKS	Twin pack of shielded Cat 5e jacks. Recommended replacement for DTX-PC5ES Patch Cord Test adapters
DTX-PCTAC6KS	Twin pack of shielded Cat 6 jacks. Recommended replacement for DTX-PC6S Patch Cord Test adapters
DTX-PCTAC6AKS	Twin pack of shielded Cat 6A jacks. Recommended replacement for DTX-PC6AS Patch Cord Test adapters
DSP-PCI-C6JACK	Replacement Cat 6 Jacks for the DSP-PCI-C6 Patch Cord Adapter, set of 10
DTX-PLA002	One Permanent Link Adapter for Cat 6A and Alien Cross Talk testing. This adapter can be used for all permanent link tests Cat 6A /6/5e/5 and Cat 3
DTX-PLA002PRP	DTX-PLA002 plug replacement parts. This item includes two contact blocks of the 8-pin modular plug.
DTX-PLA001	One Permanent Link Adapter for use with the DTX Series CableAnalyzer. This adapter is compatible with all DSP-PMxx Personality Modules but it does not include a Personality Module





DTX-EFM2

Copper Adapters, Accessories and Gold Support <i>cont.</i>	
DTX-GG45-KIT	GG45 Adapter Kit
DTX-TERA	TERA Adapter Kit—Includes TERA Channel Adapters (2) and TERA Permanent Link Adapters (2) to test Siemon TERA class F systems
DTX-PLA011	One (1) TERA Permanent Link Adapter for Siemon TERA Class F and Fa Systems. Note: You will need at least one (1) DTX-CHA011 adapter as well
DTX-CHA011	TERA Channel Adapter for Siemon TERA Class F Systems
DTX-CHA002	Cat 6A/Class Ea Channel Adapter optimized for Alien Crosstalk measurements. This adapter can be used to test Cat 6A/6/ 5e/ 5/3 and Class Ea/E/D and C channels
Personality Modules	
DSP-PM19B	SYSTIMAX® VisiPatch® 360 (T568B) Personality Module
DSP-PM19A	SYSTIMAX VisiPatch 360 (T568A) Personality Module
DSP-PM17B	TYCO/AMP 610XC Connector (T568B) Personality Module
DSP-PM17A	TYCO/AMP 610XC Connector (T568A) Personality Module
DSP-PM16B	LEVITON 110 (T568B) Personality Module
DSP-PM16A	LEVITON 110 (T568A) Personality Module
DSP-PM15B	ADC/KRONE Highband (T568B) Personality Module
DSP-PM15A	ADC/KRONE ULTIM8 (T568B) Personality Module
DSP-PM14B	ADC/KRONE ULTIM8 (T568B) Personality Module
DSP-PM14A	ADC/KRONE ULTIM8 (T568A) Personality Module
DSP-PM13B	SIEMON S210 (T568B) Personality Module
DSP-PM13A	SIEMON S210 (T568A) Personality Module
DSP-PM12B	PANDUIT GIGAPUNCH (T568B) Personality Module
DSP-PM11B	Belden GigaBIX (T568B) Personality Module
DSP-PM11A	Belden GigaBIX (T568A) Personality Module
DSP-PM10B	SYSTIMAX 110 (T568B) Personality Module
DSP-PM10A	SYSTIMAX 110 (T568A) Personality Module
DTX-SFM2	
DTX-SFM2	DTX Singlemode Fiber Modules—Includes two modules (one for Main and one for Smart Remote). each module contains 1310 nm and 1550 nm laser light source combined into single output port, 850-1550 nm power meter, integrated VFL, SC adapter for power meter and Singlemode SC-SC Test Reference Cords
GLD-DTX-FIBERMOD	1 year of Gold Support coverage for one DTX fiber module set—Models: DTX-MFM2, DTX-GFM2 or DTX-SFM2
GLD-DTXFMOD-3YEAR	3 years of Gold Support coverage for one DTX fiber module set—Models: DTX-MFM2, DTX-GFM2 or DTX-SFM2
DTX-EFM2	
DTX-EFM2	Set of two DTX Encircled Flux Multimode Fiber Modules, each incorporating: 850 nm and 1300 nm LED sources combined into a single output port Set of Encircled Flux compliant test reference cords(EF-TRC) 850/1300/1310/1550 nm power meter Integrated VFL.
GLD-DTX-EFM2	1 year of Gold Support coverage for one DTX Encircled Flux MM fiber module set—Model: DTX-EFM2
GLD3-DTX-EFM2	3 years of Gold Support coverage for one DTX Encircled Flux MM fiber module set—Model: DTX-EFM2
NFA-LC	Set of two LC Adapters for DTX-xFM2 power meter port
NFA-ST	Set of two ST Adapters for DTX-xFM2 power meter port
NFA-FC	FC Test Adapters, Set of two
NFB1/2-LC/ST	A kit containing the Test Reference Cords sets NFK1-DPLX-LC, NFK1-DPLX-ST, NFK2-DPLX-LC, NFK2-DPLX-ST, LC and ST adapters for the power meter and 62.5/125 and 50/125

Copper Adapters, Accessories and Gold Support <i>cont.</i>	
NFK1-DPLX-SC	Duplex MM 62.5 μm TRC for SC Adapter, Set of 2
NFK1-DPLX-LC	Duplex MM 62.5
NFK1-DPLX-ST	Duplex MM 62.5
NFK1-DPLX-FC	Duplex MM 62.5
NFK2-DPLX-SC	Duplex MM 50
NFK2-DPLX-LC	Duplex MM 50
NFK2-DPLX-ST	Duplex MM 50
NFK2-DPLX-FC	Duplex MM 50
NFK3-DPLX-SC	Duplex SM TRC for SC Adapter, Set of 2
NFK3-DPLX-LC	Duplex SM TRC for LC Adapter, Set of 2
NFK3-DPLX-ST	Duplex SM TRC for ST Adapter, Set of 2
NFK3-DPLX-FC	Duplex SM TRC for FC Adapter, Set of 2
NFK1-LC	LC Accessory Kit, 62.5
NFK1-MANDREL-KIT	Multimode Fiber Mandrel kit containing two red mandrels for 50/125 μm cable and two gray mandrels for 62.5/125 μm cable
NF-MANDREL-50	Multimode Fiber Mandrel for 50/125
NF-MANDREL-625	Multimode Fiber Mandrel for 62.5/125
NFC-Kit-Case	Fiber Optic Cleaning Kit.
NF400	Fiber Accessories Carrying Case
DTX-FIBER-CASE	Protective carrying case for DTX Compact OTDR Kits
DTX-FBRCE	Carry case for DTX-xFM or DTX-xFM2 Fiber Loss Test Modules with storage space for Test Reference Cords and fiber connector adapters
NFK1-EFLC-LC	One 62.5 μm SC/LC Encircled Flux Launch Controller (two required for DTX)
NFK2-EFLC-SC	One 50 μm SC/SC Encircled Flux Launch Controller (two required for DTX)
NFK1-EFLC-SC	One 62.5 μm SC/SC Encircled Flux Launch Controller (two required for DTX)
NFK2-EFLC-LC	One 50 μm SC/LC Encircled Flux Launch Controller (two required for DTX)



CableIQ™ Qualification Tester

CableIQ is the first qualification tool designed for network technicians who need to troubleshoot connectivity problems and qualify cabling bandwidth. It detects speed and duplex settings of attached switches and PCs. Intelligent wiremap graphically shows distance to faults (e.g., pin 1 break at 37 ft). Lightweight, rugged, reliable unit tests all copper cabling. Its ease and power helps you close trouble tickets faster and ensure smooth upgrades to higher network speeds.

- Sees if your existing cabling can support voice, VoIP, 10/100/Gigabit Ethernet
- Troubleshoots why existing cabling plant can't support the desired network bandwidth
- Discover what's at the end of any cable and displays device configuration (speed/duplex/pairing)
- Frees up switch ports and identifies unused links
- Graphically maps wiring configuration and shows distance to faults
- Locates and traces cable with IntelliTone™ digital signaling technology

**CableIQ Service Kit** combines powerful cable and network testing to qualify cabling bandwidth and confirm network connectivity. Expedites problem resolution and facilitates moves, adds, changes, and upgrades.

**CableIQ Gigabit Service Kit** combines powerful Gigabit cable and network testing. Expedites problem resolution and facilitates moves, adds, changes, and upgrades. Documents cabling bandwidth and network link speed.

Model	Description	Gold 1YR
CIQ-100	CableIQ with remote adapter, soft carrying case and four AA batteries	GLD-CIQ
CIQ-KIT	CableIQ with remote adapter. With the addition of Alien Crosstalk modules, IntelliTone Pro 200 Probe, six remote office IDs, rugged carrying case and four AA batteries	GLD-CIQ
CIQ-SVC	CableIQ with remote adapter, LinkRunner Network Multimeter, IntelliTone™ Pro 200 Probe, six remote cable IDs and a rugged carrying case	GLD-CIQ and GLD-LR
CIQ-GSV	CableIQ with remote adapter, LinkRunner Pro Network Multimeter, IntelliTone Pro 200 Probe, six remote cable IDs and a rugged carrying case	GLD-CIQ and GLD-LR
CIQ-KRQ	CableIQ, RJ-45 patch cord (2), RJ-11 patch cord (2), bare wire adapter, speaker wire adapter, coax cable, coax BNC adapter, coax RCA adapter, "Qualified" labels (50) and a soft carrying case	GLD-CIQ
CIQ-VOIP	CableIQ with remote adapter, CableIQ Reporter software CD, IntelliTone Pro 200 Probe, CableIQ Remote IDs #2-7, NetTool Series II Pro VoIP tester with 10/100/1000Mbps inline, VoIP option, NetProbe diagnostics, NetTool Connect PC software, WireView Wiremapper #1, (2) RJ-45 – RJ-45 patch cords, (2) USB cables, coax "F" push-on adapter, 75-ohm coax patch cord, RJ-45/11 universal coupler, RJ-11 – RJ-11 patch cord, Ethernet cable, hard carry case for CableIQ, and soft carrying case for NetTool	GLD-CIQ and GLD-NT
CIQ-CIT	CableIQ IT hard carrying case	N/A
CIQ-COAX	CableIQ Coax Adapter Kit—includes F-connector, BNC and RCA connectors	N/A
CIQ-IDK24	CableIQ Remote Identifier Kit—includes remote identifier numbers 2-4	N/A
CIQ-IDK57	CableIQ Remote Identifier Kit—includes remote identifier numbers 5-7	N/A
CIQ-RJA	RJ-45/11 modular adapter	N/A
CIQ-SPKR	CableIQ speaker wire adapter	N/A
CIQ-WM	CableIQ main wiremap adapter (replacement part for lost or damaged unit)	N/A
CLIP-SET	Clip Set – includes RJ-45-to-8-clip test lead	N/A

To learn more visit: [www.flukenetworks.com/cableiq](http://www.flukenetworks.com/cableiq)



CableIQ Advanced IT Kit



CableIQ Gigabit Service Kit



MicroMapper™

Simple verification tester verifies wiremap and identifies faults with LEDs.

- Testing of twisted pair cables for open circuits, shorts, crossed pairs, reversed pairs and split pairs
- Easy-to-read fault display
- Tone generator for tracing installed cables hidden in walls, floors and ceilings
- Remote unit enables one-person testing of installed cables

Model	Description
MT-8200-49A	MicroMapper and MicroMapper Remote, patch cable, 6-volt alkaline battery and user guide

To learn more visit: [www.flukenetworks.com/micromapper](http://www.flukenetworks.com/micromapper)



MicroScanner² Cable Verifier

Next generation MicroScanner streamlines voice/data/video cable and service testing. The user interface makes testing fast, easy, and crystal clear. Everything cable technicians need to know, including available services (10/100/1000 Ethernet, POTS, PoE voltage), cable length, wiremap, cable ID, and distance to fault all are displayed on one oversized backlit screen. Replace multiple tools by testing all RJ-11, RJ-45, and coax (F) media with no adapters. Built-in IntelliTone™ digital and analog toning precisely locates virtually any cable or wire pair – even on active networks. Ergonomic design features sleek rubber over mold to enhance grip and ruggedness. Includes carry case.

- Displays cable length, wiremap, cable ID, and distance to fault on one screen
- Detects today's media services, including 10/100/1000 Ethernet, POTS, and PoE
- Locates virtually any cable or wire pair with IntelliTone digital and analog toning

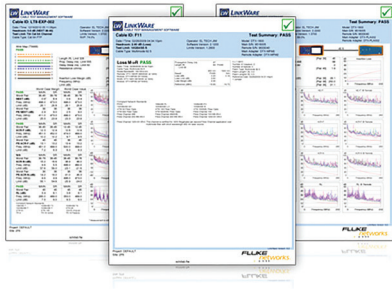


Model	Description
MS2-100	MicroScanner² Cable Verifier
MS2-KIT	MicroScanner² Professional Kit—includes MicroScanner2 Cable Verifier, Remote ID #s 2-7, IntelliTone Pro 200 Probe, bare wire adapter, coax cable, two shielded RJ-45 cables, two RJ-11 cables and a deluxe carry case
MS2-TTK	MicroScanner² Termination Test Kit—includes MicroScanner2 Cable Verifier, IS60 Pro Tool Kit, IntelliTone Pro 200 Probe, RJ-11 and RJ-45 patch cables, lanyard, owners CD and quick start guide, 9 volt battery and a deluxe carry case
MS2-IDK27	MicroScanner² Remote ID Kit #s 2-7
CLIP-SET	Clip Set—includes RJ-45 to 8-clip test lead
MT-8200-63A	IntelliTone Pro 200 Probe

To learn more visit: [www.flukenetworks.com/microscanner](http://www.flukenetworks.com/microscanner)







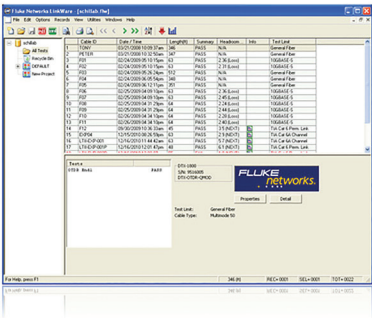
LinkWare™ Cable Test Management Software

LinkWare lets you manage test results data from multiple testers with one PC application. LinkWare makes project setup simpler by helping you quickly organize, edit, view, print, save or archive test results by job site, customer, campus or building. You can merge test results into an existing LinkWare database and then sort, search and organize the results by data fields or parameters. And you can count on your data integrity to be secure: any data uploaded to your PC with LinkWare comes only from the testers’ memory.

- Now included in LinkWare 9.0 Automated registration for Versiv products: DSX-5000 CableAnalyzer™, CertiFiber® Pro Optical Loss Test Set and OptiFiber® Pro OTDR
- Electronically save, maintain and archive test results
- Deliver professional reports in a common format
- LinkWare Stats™, a comprehensive view of your entire cable plant’s performance
- Standards compliant with the ability to configure and print TIA 606-A documentation
- Simple user interface and time-saving features for increased productivity
- LinkWare 9.0 is included with the DSX-5000 CableAnalyzer, CertiFiber Pro Optical Loss Test Set, OptiFiber Pro OTDR, DTX CableAnalyzer Series, and SimpliFiber® Pro Optical Loss Test Kits

NOTE: If you are using a DSP-100, DSP-2000, PentaScanner and SimpliFiber unit—please continue to use LinkWare version 6.2—download now (Version 6.2, updated December 17, 2010, 13 MB)

Model	Description
LinkWare	LinkWare Cable Test Management Software gives you the ability to manage test results data from multiple testers with one single software application



LinkWare Stats™

LinkWare Stats generates statistics on the cabling links within your LinkWare database, then transforms the performance results into summary graphics that give you the analytical information you need, fast. Whether you’re a network owner, cabling contractor or manufacturer, now for the first time you can quickly see the true performance of the entire cabling plant and spot any anomalies or inconsistencies.

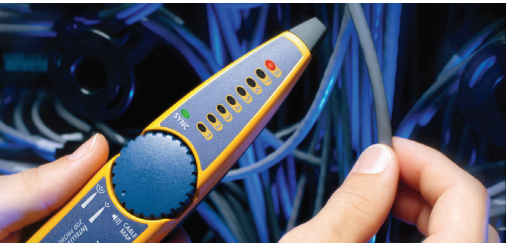
- Now included in LinkWare
- Eliminate the chance of overlooking an anomaly with reports that highlight marginal or failed links
- Demonstrate that an installation meets warranty requirements
- Help win business with professional and customized summary performance reports
- Create graphs and tables that show margins by test standard, operator, location and other attributes



IntelliTone™ Pro 200 LAN Toner and Probe

The IntelliTone Pro 200 LAN Toner and Probe Series from Fluke Networks is the first network cable toner and probe to offer digital and analog signaling all in one tool. The IntelliTone Pro 200 LAN Toner and Probe Series from Fluke Networks gives you superior vision for locating cables hidden in floors, ceilings, walls, and in bundles. Its breakthrough digital technology makes it the first tool to tone and trace safely and effectively on active networks

- Ends cable location confusion; decisively rejects noise and false signals
- Locates cables on active networks; even when terminated at a switch
- Isolates cable and wiring within a bundle despite cable bleed
- Confirms cable location, verifies continuity, and detects faults (opens, shorts, and reversed pairs) in one step



SmartTone® analog toning technology:

- Isolates individual wire pairs precisely by changing tone when shorted
- Effectively traces and locates voice, audio, and video cabling

Model	Description
MT-8200-60-KIT	IntelliTone Pro 200 LAN Toner and Pro 200 Probe, coax F connector adapter, (2) RJ11 and (2) RJ 45 patch cables, test leads with alligator clips, lanyards, quick start guide, and (2) 9 volt batteries
MT-8200-61-TNR	IntelliTone Pro 200 LAN Toner, coax F connector adapter, RJ11 and RJ 45 patch cables, test leads with alligator clips, lanyard, quick start guide, and 9 volt battery
MT-8200-63A	IntelliTone Pro 200 Probe, RJ11 and RJ 45 patch cables, lanyard, quick start guide, and 9 volt battery

Accessories

Model	Description
MT-8202-05	IntelliTone Case Heavy-duty pack cloth padded and lined case with belt loops and d-ring
MT-8203-20	Test Leads with Bed of Nails Set of two Banana Jack test leads with piercing pin ‘Bed of Nails’ alligator clips with vinyl sleeves
MT-8203-22	Test Leads with Alligator Clips Set of two Banana Jack test leads with standard alligator clips with vinyl sleeves



Pocket Toner®

The Pocket Toner® connects to any voice, data, or video cable to detect open/short circuits, continuity, AC/DC voltage\* and dial tone\* all while protecting up to 52 volts. All of the Pocket Toners have dual audible indicators in the main body and detachable buzzer toner units, removable push on connectors, auto shut-off and easy-to-read indicators.

- Low-voltage circuit protection for both the unit and the detachable toner
- Dual audible indicators in the main body and detachable buzzer toner units
- Auto shut-off
- Easy-to-read indicators; removable push-on connectors
- Male and female adaptable toner section
- Lightweight, durable anodized aluminum body

Model	Description
PTNX1	Identify and test low-voltage, singular coax cables for continuity, opens/shorts and 50-75 Ω termination. Low-voltage protection up to 52 volts. Kit includes NX1 unit, toner, F-type (M-push, Speed 81™) adapters and 1-AAA battery
PTNX2	All the features of the NX1 plus AC/DC voltage detection- all in an easy-to-read LCD. Kit includes NX2 unit, toner, F-type (M-push, Speed 81) adapters and 1-AAA battery
PTNX2-DLX	All the NX2 features. Kit includes NX2 unit, toner, 66 block adapter, RJ-11 adapter, RJ-45 adapter, Dial Tone Detective™, alligator clips with RJ-45 adapter, F-type (F, 9-M-push, M-71, Speed 81) adapters, RCA (M, F) adapters, BNC (M, F) adapters, 1-AAA battery and deluxe case with belt clip
PTNX2-CABLE	All the NX2 features. Kit includes NX2 unit, toner, alligator clips adapter, F-type (F, M-push, M-71, Speed 81) adapters, 1-AAA battery and small canvas case
PTNX8	All the features of the NX1 and NX2 plus the ability to test up to 8 cables at once. NX8 unit, toner, F-type (M-push, Speed 81) adapters, 1-AAA battery and deluxe case with belt clip
PTNX8-CABLE	All the NX8 features. Kit includes NX8 unit, toner, 8 ID caps, alligator clips, F-type (F, 9-M-push, M-71, Speed 81) adapters, 1-AAA battery and deluxe case w/ belt clip
PTNX8-CT	All the NX8 features. Kit includes NX8 unit, toner, 8 ID caps, 66 block adapter, RJ-11 adapter, Dial Tone Detective, alligator clips with RJ-11 adapter, F-type (F, 9-M-push, M-71, Speed 81) adapters, 1-AAA battery and deluxe case with belt clip
PTNX8-DLX	All the NX8 features. Kit includes NX8 unit, toner, 8 ID caps, 66 block adapter, RJ-11 adapter, RJ-45 adapter, Dial Tone Detective, alligator clips with RJ-45 adapter, F-type (F, 9-M-push, M-71, Speed 81) adapters, RCA (M, F) adapters, BNC (M, F) adapters, 1-AAA battery and deluxe case w/ belt clip
PTNX8-VV-PRO	All the NX8 features. Kit includes NX8 unit, toner, 8 ID caps, 66 block adapter, 8-RJ-11 adapters, RJ-45 adapter, Dial Tone Detective, alligator clips w/ RJ-11 adapter and RJ-45 adapter, F-type (F, 9-M-push, M-71, Speed 81) adapters, RCA (M, F) adapters, BNC (M, F) adapters, 1-AAA battery and deluxe case w/ belt clip
ADAP-PTNX-KIT	Alligator clips and RJ-45 adapter, alligator clips and RJ-11 adapter, Dial Tone Detective, RJ-11 adapter, 66 block adapter, RJ-45 adapter, F-type (F, M-Push, M-71, Speed 81) connectors, RCA (M, F) connectors, BNC (M, F) connectors and 2-wire clip adapter
CASE-PTNX-SM	Small case
CASE-PTNX-LG	Large case
PTNX8-ID-1-8	8-ID caps
ADAP-PTNX-RJ11	8 RJ-11 adapters
ADAP-PTNX-RJ45	8 RJ-45 adapters
ADAP-PTNX-TNR	1 Toner

\*Varies by model/kit configuration

To learn more visit: [www.flukenetworks.com/pt](http://www.flukenetworks.com/pt)



Cable Professional



Satellite



Audio & Video



LAN



Voice



Security & Fire



Cable & Telephone



TS®100 PRO Cable Fault Finder

Invest in the right tool for all your technicians. The new TS®100 PRO Cable Fault Finder with PowerBT™ Bridge Tap Detect is a telecom technician's first line of defense against bridge taps on a subscriber's line. Because a bridge tap is a significant source of DSL network performance problems due to unwanted signal reflectance, it needs to be identified and fixed quickly before the problem causes customer attrition. The TS100 PRO can accurately locate multiple bridge taps in seconds on up to 3,200 feet of cable with the touch of a button.

- Bridge tap detection for xDSL pre-qualification on up to 3,200 feet (975 meters)
- Tests opens and shorts up to 8,000 feet (2.4 kilometres)
- Sees past bridge taps to the end of the cable
- Patented SmartTone® tone generator with five different tones for exact pair identification
- Built-in TDR and toner
- AC/DC voltage detection and digital read out



Model	Description
TS100-PRO-BT-TDR	TS100 PRO Cable Fault Finder TDR Kit with Bridge Tap Detect
LEAD-ABNP-100	Test lead with angled-bed-of-nails and piercing pin. Compatible with the TS100 and TS100 PRO
CASE-TS100	TS100/TS100PRO pouch with Fluke Networks' logo
LEAD-ALIG-100	Test lead with alligator clips. Compatible with the TS100 and TS100 PRO
LEAD-ABN-100	Test lead with angled-bed-of-nails. Compatible with the TS100 and TS100 PRO

To learn more visit: [www.flukenetworks.com/ts100pro](http://www.flukenetworks.com/ts100pro)



TS®90/TS®100 Cable Fault Finder

Fluke Networks' cable fault finders are easy-to-use, three-in-one testers; a fault locator, a cable inventory manager and a toner with SmartTone® technology. Easily find the distance to opens or shorts on electrical wire, telephone wire, security wire and coax. Displays distance reading rather than waveform.

- TS90 works on any two or more conductor cable upto 2,500 feet
- TS100 works on any two or more conductor cable up to 3,000 feet (metric unit also available)
- Instantly measures distance to open or short from one end of any cable pair
- Patented SmartTone® tone generator positively identifies pair
- Measures cable distance on spool
- Measures constantly while "on"

Model	Description
26500000	TS100 Cable Fault Finder, BNC alligator clip
26500090	TS90 cable fault finder with BNC to alligator clips
26501100	TS90/TS100 line cord, BNC to alligator clip
26501160	TS90/TS100 pouch with belt clip
26501700	TS90/TS100 line cord, BNC to banana to ABN

To learn more visit: [www.flukenetworks.com/ts100](http://www.flukenetworks.com/ts100)



# Cabling Certification – Versiv™

Faster systems acceptance for all copper and fiber certification jobs.



## Fiber Testing, Troubleshooting and Certification

**Complete solutions for the installation, testing, documentation and certification of fiber premises cabling**

The Fluke Networks' fiber test family is the industry's broadest range of tools for fiber inspection and cleaning, loss/length (Tier 1) fiber certification, fiber plant characterization and troubleshooting (Tier 2) fiber certification. From OTDRs to cleaning supplies, Fluke Networks' fiber optic tools meet the complex needs of cabling contractors, installers and network technicians. We set the standard for accuracy, ease of use and field toughness. So, whether you need simple continuity testing or advanced certification, Fluke Networks is the right choice.

### Fiber Testing, Troubleshooting and Certification Comparison

- CertiFiber® Pro
- OptiFiber® Pro
- MultiFiber Pro
- DTX-EFM2
- SimpliFiber Pro® Optical Power Meter
- Fiber Test Kits

- 18
- 20
- 21
- 24
- 25
- 26
- 26

To learn more: [www.flukenetworks.com/versiv](http://www.flukenetworks.com/versiv)





FIBER TESTING, TROUBLESHOOTING AND CERTIFICATION

FIBER TESTING, TROUBLESHOOTING AND CERTIFICATION	Inspection and Cleaning			Loss Length (Tier 1) Cert					Plant Characteritics and Troubleshooting				OTDR (Tier 2) Certification
	FI-7000 FiberInspector™ Pro	FiberInspector Mini Video Microscope	Fiber Optic Cleaning Kits	SimpliFiber® Pro Optical Power Meter and Fiber Test Kits	CertiFiber Pro OLTS		DTX Series with Fiber Module	MultiFiber Pro MPO Power Meter & Fiber Test Kits	VisiFault Visual Fault Locator	FindFiber Remote ID	Fiber QuickMap	Fiber OneShot Pro	OptiFiber Pro OTDR
	Fiber end-face certification	✓			✓								✓
	Check for fiber end-face contamination or damage	✓	✓		✓								✓
	Clean contamination			✓									
	Check connectivity			✓	✓		✓	✓	✓	✓	✓	✓	✓
	Check polarity				✓	✓		✓	✓	✓			
	Verify Loss over entire link to ensure loss budget not exceeded				✓	✓	✓	✓					
	Encircled Flux compliant				✓	✓	EFM2	✓					
	Dual-fiber loss testing					✓	✓						
MPO fiber loss testing							✓						
Basic (Tier 1)				✓	✓		✓	✓					
Locate faults									✓		✓	✓	✓
Extended (Tier 2)													✓
Pass/fail results	✓				✓		✓	✓					✓
Document test results	✓				✓		✓	✓				✓	✓
Fiber types supported	Singlemode Multimode MPO	Singlemode Multimode	Singlemode Multimode MPO	Singlemode Multimode	Singlemode Multimode		Singlemode Multimode	MPO	Singlemode Multimode	Singlemode Multimode	Singlemode	Multimode	Singlemode Multimode
Source type	LED	LED		LED, FP Laser	LED, FP Laser		LED, FP Laser	LED, FP Laser	Laser	Laser	Laser	Laser	LED, FP Laser







Fiber Plant Characterization, Troubleshooting  
(Tier 2) Fiber Certification



OptiFiber® Pro OTDR

OptiFiber Pro OTDR is the industry’s first data center OTDR built from the ground up to meet the challenges of enterprise fiber infrastructures. This fiber troubleshooting and certification tool combines uncomplicated power with unparalleled efficiency and the exact functions needed for troubleshooting or certifying campus, datacenter and storage fiber networks.

It elevates fiber testing with the industry’s only smartphone interface that turns any technician into a fiber expert. The DataCenter configuration eliminates uncertainty and errors that occur when testing data center fiber. Its ultra-short dead zones enable testing of fiber patchcords in virtualized data centers. These capabilities, plus the fastest-in-the-industry trace times, make the OptiFiber Pro OTDR the must-have tool.

- Effectively test data center fiber with the least set-up and trace time
- Accelerate fiber certification with trace times as short as two seconds in Quick Test mode
- Troubleshoot data center fiber links where short patch cables and dense connectors are common
- SmartLoop OTDR introduces the testing of two fibers in a single test eliminating the need to travel to the far end of the connection to perform tests
- Reduce network downtime by quickly and precisely identifying faults on singlemode (SM) or multimode (MM) fiber

Model	Description	Gold 1YR	Gold 3YR
OFF-100-M	OptiFiber Pro Multimode OTDR for troubleshooting and extended certification	GLD-OFP-100-M/S	GLD3-OFP-100-M/S
OFF-100-M/GLD	Kit bundled with 1-year of Gold Support (available in U.S. only)	Included in Bundle	
OFF-100-S	OptiFiber Pro Singlemode OTDR for troubleshooting and extended certification	GLD-OFP-100-M/S	GLD3-OFP-100-M/S
OFF-100-S/GLD	Kit bundled with 1-year of Gold Support (available in U.S. only)	Included in Bundle	
OFF-100-Q	OptiFiber Pro Quad OTDR for troubleshooting and extended certification	GLD-OFP-100-Q	GLD3-OFP-100-Q
OFF-100-Q/GLD	Kit bundled with 1-year of Gold Support (available in U.S. only)	Included in Bundle	
OFF-100-MI	OptiFiber Pro Multimode OTDR for troubleshooting and extended certification, includes FI-1000-KIT and accessories	GLD-OFP-100-MI/SI	GLD3-OFP-100-MI/SI
OFF-100-MI/GLD	Kit bundled with 1-year of Gold Support (available in U.S. only)	Included in Bundle	
OFF-100-SI	OptiFiber Pro Singlemode OTDR for troubleshooting and extended certification, includes FI-1000-KIT and accessories	GLD-OFP-100-MI/SI	GLD3-OFP-100-MI/SI
OFF-100-SI/GLD	Kit bundled with 1-year of Gold Support (available in U.S. only)	Included in Bundle	
OFF-100-QI	OptiFiber Pro Quad OTDR for troubleshooting and extended certification, includes FI-1000-KIT and accessories	GLD-OFP-100-QI	GLD3-OFP-100-QI
OFF-100-QI/GLD	Kit bundled with 1-year of Gold Support (available in U.S. only)	Included in Bundle	
OFF-CFP-MI	OptiFiber Pro and CertiFiber Pro Multitmode testing kit	GLD-OFP-CFP-MI/SI	GLD3-OFP-CFP-MI/SI
OFF-CFP-SI	OptiFiber Pro and CertiFiber Pro Singlemode testing kit	GLD-OFP-CFP-MI/SI	GLD3-OFP-CFP-MI/SI
OFF-CFP-QI	OptiFiber Pro and CertiFiber Pro Quad testing kit	GLD-OFP-CFP-QI	GLD3-OFP-CFP-QI

To learn more visit: [www.flukenetworks.com/optifiberpro](http://www.flukenetworks.com/optifiberpro)

Launch Fibers

Model	Description
MMC-50-SCLC	Multimode launch cable 50 μm SC/LC
MMC-50-SCST	Multimode launch cable 50 μm SC/ST
MMC-50-SCFC	Multimode launch cable 50 μm SC/FC
SMC-9-SCSC	Singlemode launch cable 9 μm SC/SC
SMC-9-SCLC	Singlemode launch cable 9 μm SC/LC
SMC-9-SCST	Singlemode launch cable 9 μm SC/ST
SMC-9-SCFC	Singlemode launch cable 9 μm SC/FC



Loss/length (Tier 1) Fiber Certification



CertiFiber® Pro

The CertiFiber Pro improves the efficiency of fiber certification with a 3 second, two fibers at both wavelengths test. The Taptive user interface simplifies set-up, eliminates errors and speeds trouble-shooting. A set reference wizard ensures correct reference setting and eliminates negative loss errors. Built on the future-ready Versiv platform, CertiFiber Pro provides merged Tier 1 (Basic) / Tier 2 (Extended) testing and reporting when paired with OptiFiber Pro module. A convenient quad module supports both singlemode and multimode and is multimode Encircled Flux compliant. Analyze test results and create professional test reports using LinkWare Management Software.

- Taptive™ user interface provides simple, animated guidance to eliminate incorrect reference setup and “negative loss” errors
- Fastest time to certify—two fibers at two wavelengths in three seconds
- Encircled Flux compliant as required by ANSI/TIA and ISO/IEC with no additional test cords
- Merged Tier 1 (Basic) / Tier 2 (Extended) testing and reporting when paired with OptiFiber Pro
- ProjX™ management system ensures all jobs are completed correctly and efficiently
- Convenient quad module supports both multimode and singlemode loss testing
- Extended singlemode distance range to 130km
- Built in Visual Fault Locator

Model	Description	Gold 1YR	Gold 3YR
CFP-100-Q	CertiFiber Pro Quad Testing Kit	GLD-CFP-100-Q	GLD3-CFP-100-Q
CFP-100-M	CertiFiber Pro Multimode Testing Kit	GLD-CFP-100-M/S	GLD3-CFP-100-M/S
CFP-100-S	CertiFiber Pro Singlemode Testing Kit	GLD-CFP-100-M/S	GLD3-CFP-100-M/S
OFP-CFP-QI	OptiFiber Pro and CertiFiber Pro Quad Testing Kit	GLD-OFP-CFP-QI	GLD3-OFP-CFP-QI
OFP-CFP-MI	OptiFiber Pro and CertiFiber Pro Multimode Testing Kit	GLD-OFP-CFP-MI/SI	GLD3-OFP-CFP-MI/SI
OFP-CFP-SI	OptiFiber Pro and CertiFiber Pro Singlemode Testing Kit	GLD-OFP-CFP-MI/SI	GLD3-OFP-CFP-MI/SI
CFP-Q-ADD-R	CertiFiber Pro Quad Add-on Kit with Remote	GLD-CFP-Q-ADD-R	GLD3-CFP-Q-ADD-R
CFP-Q-ADD	CertiFiber Pro Quad Add-on Kit	GLD-CFP-Q-ADD	GLD3-CFP-Q-ADD
CFP-MM-ADD	CertiFiber Pro Multimode Add-on Kit	GLD-CFP-MM/SM-ADD	GLD3-CFP-MM/SM-ADD
CFP-SM-ADD	CertiFiber Pro Singlemode Add-on Kit	GLD-CFP-MM/SM-ADD	GLD3-CFP-MM/SM-ADD

Accessories

Model	Description
FI-1000-KIT	FI-1000 USB Fiber Inspection Video Probe with selective bulkhead and video probe tips
FI-1000	FI-1000 FiberInspector USB video probe for Versiv platform
SRC-9-SCSC-KIT	Singlemode test reference cord kit (2m) for testing SC terminated fibers (4 SC/SC)
SRC-9-SCLC-KIT	Singlemode test reference cord kit (2m) for testing LC terminated fibers (2 SC/LC, 2 LC/LC)
SRC-9-SCFC-KIT	Singlemode test reference cord kit (2m) for testing FC terminated fibers (2 SC/FC, 2 FC/FC)
SRC-9-SCST-KIT	Singlemode test reference cord kit (2m) for testing ST terminated fibers (2 SC/ST, 2 ST/ST)
SRC-9-SCSCAPC-KIT	Singlemode TRC KIT 2m (2 SCUPC/SCAPC,2 SCAPC/SCAPC)
SRC-9-SCLCAPC-KIT	Singlemode TRC KIT 2m (2 SCUPC/LCAPC,2 LCAPC/LCAPC)
MRC-50EFC-SCLCKIT	Multimode Encircled Flux compliant test reference cord kit (2m) for testing 50um LC terminated fibers (2 SC/LC, 2 LC/LC)
MRC-50EFC-SCSCKIT	Multimode Encircled Flux compliant test reference cord kit (2m) for testing 50um SC terminated fibers (4 SC/SC)
MRC-50EFC-SCSTKIT	Multimode Encircled Flux compliant test reference cord kit (2m) for testing 50um ST terminated fibers (2 SC/ST, 2 ST/ST)
MRC-50EFC-SCFCKIT	Multimode Encircled Flux compliant test reference cord kit (2m) for testing 50um FC terminated fibers (2 SC/FC, 2 FC/FC)



MultiFiber Pro™

MultiFiber Pro takes the complexity out of testing MPO trunks for loss and polarity. With an on-board MPO connector, it is the first tester to automate the MPO fiber-trunk testing process without using a fan-out cord. The power meter/light source boasts industry-first functions such as automatic scanning of all twelve fibers and display of test results in an easy-to-read bar graph. These innovative features allow MultiFiber Pro kits to eliminate the complexity of testing MPO trunks, making it 90 percent faster than the traditional simplex test methods.

- Automatic scanning and testing of all fibers in MPO connectors with “Scan All”
- Support for both Multimode and Singlemode MPO trunks
- Eliminates the need for fan-out cords when testing fiber trunks
- Easy to interpret test results with minimal navigation
- User interface displays all 12 fibers
- Automate 8, 10 and 12 fiber measurements
- Troubleshoot MPO links and drill down to single fiber test results

Model	Description	Gold 1YR	Gold 3YR
MFTK1200	MultiFiber Pro Multimode Testing Kit	GLD-MFTK	GLD3-MFTK
MFTK-SM1310	MultiFiber Pro 1310 nm Singlemode Kit	GLD-MFTK-SM	GLD3-MFTK-SM
MFTK-SM1550	MultiFiber Pro 1500 nm Singlemode Kit	GLD-MFTK-SM	GLD3-MFTK-SM
MFTK-MM850-SM1310	MultiFiber Pro Multimode & 1310 nm Singlemode Kit	GLD-MFTK-MMSM	GLD3-MFTK-MMSM
MFTK-MM850-SM1550	MultiFiber Pro Multimode & 1550 nm Singlemode Kit	GLD-MFTK-MMSM	GLD3-MFTK-MMSM
OFPMI-MFP	OptiFiber Pro and MultiFiber Pro Multimode testing kit	GLD-OFPMI-MFP	GLD3-OFPMI-MFP
OFFQI-MFP	OptiFiber Pro Quad and MultiFiber Pro Multimode testing kit	GLD-OFPQI-MFP	GLD3-OFPQI-MFP
MFPOWERMETER	MultiFiber Pro Optical Power Meter	GLD-MF	GLD3-MF
MFMULTIMODESOURCE	MultiFiber Pro Multimode Source	GLD-MF	GLD3-MF
MF1310source	MultiFiber Pro SM 1310 nm laser light source	GLD-MF-SMS	GLD3-MF-SMS
MF1550source	MultiFiber Pro SM 1310 nm laser light source	GLD-MF-SMS	GLD3-MF-SMS
FI-7000-MPO	FiberInspector Pro w/MFO and cleaning	GLD-FI-7000-MPO	GLD3-FI-7000-MPO

Accessories

Model	Description
TRC-MPO-PP-B	1 m MM TRC, MPO/MPO, Pinned/ Pinned, Type B polarity
TRC-MPO-UP-B	1 m MM TRC, MPO/MPO, Unpinned/ Pinned, Type B polarity
TRC-MPO-UU-B	0.3 m MM TRC, MPO/MPO, Unpinned/ Unpinned, Type B polarity
TRC-SM-MPOAPC-PP-A	1 m SM TRC, MPOAPC/MPOAPC, Pinned/Pinned, Type A polarity
TRC-SM-MPOAPC-UP-A	1 m SM TRC, MPOAPC/MPOAPC, Unpinned/Pinned, Type A polarity
TRC-SM-MPOAPC-UU-B	0.3 m SM TRC, MPOAPC/MPOAPC, Unpinned/Unpinned, Type B polarity
BKC-MPO-ULC	1 m breakout cord for MM MPO Unpinned LC connector
BKC-MPO-USC	1 m breakout cord for MM MPO Unpinned SC connector
SBKC-MPOAPCU-LCAPC	1 m Breakout Cord for SM MPOAPC Unpinned LCAPC Connector
SBKC-MPOAPCU-SCAPC	1 m Breakout Cord for SM MPOAPC Unpinned SCAPC Connector
ADP-MPO-A	Type A polarity MPO adapter for SM APC
ADP-MPO-B	Type B polarity MPO adapter



DTX-EFM2

As enterprise bandwidth demand increases, it is more important than ever for installers and network owners to certify and document that their fiber links meet established industry standards, to protect against network downtime and lost revenue.

The Fluke Networks DTX-EFM2 Encircled Flux Multimode Modules for the DTX CableAnalyzer enable you to easily and accurately test while ensuring compliance. EF requirements are defined in the TIA-526-14-B and IEC 61280-1-4 standards. Encircled Flux compliance reduces loss measurement variation to a goal of +/- 10%, decreasing measurement uncertainty and improving measurement repeatability every time. This is the standard that cable manufacturers will expect for warranties.

The DTX Encircled Flux Fiber Modules matched with EF test reference cords (DTX-EFM2) are a quick and easy way to upgrade to EF compliance. No special training or change to normal testing procedures is required.

Model	Description	Gold 1YR	Gold 3YR
DTX-EFM2	Set of two DTX Encircled Flux Multimode 850 and 1300 nm Fiber Modules	GLD-DTX-EFM2	GLD3-DTX-EFM2
DTX-1800-E	DTX-1800 and Set of two DTX Encircled Flux Multimode Fiber Modules	GLD-DTX-E	GLD3-DTX-E
DTX-1800-E/GLD	DTX-1800 and Set of two DTX Encircled Flux Multimode Fiber Modules with 1 year Gold	—	—
DTX-1800-ES	DTX-1800 and Set of two DTX Encircled Flux Multimode Fiber Modules and Set of two DTX Singlemode Fiber Modules	GLD-DTX-ES	GLD3-DTX-ES



DTX Fiber Modules

Add loss/length fiber certification capability to your DTX CableAnalyzer Certify fiber loss, length and polarity quickly and simply with the one-button Autotest. Featuring automated testing of two fibers, each at two wavelengths, optical length measurement and pass/fail analysis. The fastest test solution that yields the greatest time and cost savings. Troubleshoot problems visually with the built-in VFL Save, upload and report results using LinkWare PC software. Available multimode and singlemode modules enable certification of both fiber types.

Model	Description	Gold 1YR	Gold 3YR
DTX-EFM2	Set of two DTX Encircled Flux Multimode 850 and 1300 nm Fiber Modules	GLD-DTX-EFM2	GLD3-DTX-EFM2
DTX-SFM2	Set of two DTX Singlemode 1310 and 1550 nm Fiber Modules	GLD-DTX-FIBERMOD	GLD-DTXFMOD-3YEAR

See page 7 for the DTX CableAnalyzer copper options.

To learn more visit: [www.flukenetworks.com/dtx](http://www.flukenetworks.com/dtx)





SimpliFiber Pro® Optical Power Meter

SimpliFiber Pro Optical Power Meter and Fiber Test Kits are the single “go-to” kits for anyone involved in first-line optical fiber cabling installation and verification. Designed for in-house fiber technicians as well as contractors, our expertly configured kits are housed in a professional and durable case and contain all the simple-to-use tools needed to quickly measure loss and power levels, locate faults and polarity issues, and inspect and clean connector end-faces.

- Dual-wavelength testing—complete testing in half the time
- Additional wavelengths to include 1490 and 1625—calibrated to extend from typical enterprise wavelengths for other applications
- Min/Max—precision tracking of intermittent power fluctuations, a superior alternative to the inaccurate “wobble” test
- CheckActive™—audible tone and display icon alerts you to a live wire
- Saves 1,000 results – compatible with our popular LinkWare™ Cable Test Management Software



Model	Description	Gold 1YR
SFPOWERMETER	SimpliFiber Pro optical power meter; SC adapter included.	GLD-SFPRO
SFMULTIMODESOURCE	SimpliFiber Pro multimode 850/1300 light source. Fixed SC port (with ST and LC testing capability available using hybrid test-reference cord accessories purchased separately)—includes FindFiber™ source capability.	GLD-FTK
SFSINGLEMODESOURCE	SimpliFiber Pro singlemode 1310/1550 laser light source. Fixed SC port (with ST and LC testing capability available using hybrid test-reference cord accessories purchased separately)—includes FindFiber source capability.	GLD-FTK
SFSINGLEMODE2	SimpliFiber Pro singlemode 1490/1625 laser light source. Fixed SC port (with ST and LC testing capability available using hybrid test-reference cord accessories purchased separately). Includes FindFiber™ source capability.	GLD-FTK

To learn more visit: [www.flukenetworks.com/simplifiberpro](http://www.flukenetworks.com/simplifiberpro)

Fiber Test Kits

SimpliFiber Pro fiber test kits come in every configuration to meet your testing needs. Each fiber test kit includes the following industry-leading features:

- **Dual-wavelength testing**—complete testing in half the time
- **Additional wavelengths to include 1490 and 1625**—calibrated to extend from typical enterprise wavelengths for broader applications
- **Min/Max**—precision tracking of intermittent power fluctuations. A superior alternative to the inaccurate “wobble” test
- **CheckActive**—audible tone and display icon alerts you to a live wire
- **Saves 1,000 results**—fully compatible with our popular LinkWare Cable Test Management Software
- Quickly locate cable fault, polarity, and connector problems with VisiFault VFL

Complete Fiber Verification Kit (FTK1450)

The Complete Fiber Verification Kits are for network technicians and contractors who install and maintain premise networks with both multimode and singlemode optical fiber. Use these kits to verify optical loss and power levels at 850, 1300, 1310, 1550, and inspect fiber end-faces, locate cable faults, connector problems, and polarity issues.



Full-featured Inspection and Multimode Verification Kit (FTK1300 and FTK1350)

The Full-featured Inspection and Multimode Verification Kits are for network technicians and contractors who install and maintain multimode premises network. Use these kits to verify optical loss and power levels at 850 and 1300 nm, inspect fiber end-faces, locate cable faults, connector problems, and polarity issues.

Basic Verification Kit (FTK1000 and FTK2000)

The Basic Verification Kit is a great starter kit for network technicians and contractors who install and maintain fiber links. Available in single or multimode configurations, quickly verify optical loss and power levels at 850 and 1300 nm or 1310 and 1550 nm. Add additional sources, microscopes, and VFL options as needed.

Copper and Fiber Technician’s Kit (CIQ-FTKSFP)

Consisting of the CableIQ (CIQ-KIT) and the SimpliFiber Pro Basic Verification Kit (FTK1000), the Copper and Fiber Technician’s Kit provides a robust combination of tools to help you expertly manage your network to it keep it running smoothly and inexpensively. Simple-to-use straight from the box, you can do everything from quickly troubleshooting and qualifying cabling link bandwidth to verifying optical fiber power and loss.

FTK2100 Singlemode Fiber Verification Kit

Includes SimpliFiber Pro optical power meter, two singlemode sources (1310/1550 and 1490/1625 nm), carrying case, and SC power-meter adapter.

MS2-FTK Copper and Fiber Basic Technician’s Kit

Includes the MicroScanner (MS2-100) and SimpliFiber Pro (FTK1000) Fiber Test Kit.

Model	FTK1000	FTK1300	FTK1350	FTK1450	FTK2000	FTK2100
SimpliFiber Pro Power Meter	✓	✓	✓	✓	✓	✓
SimpliFiber Pro Source 850/1300 MM source	✓	✓	✓	✓		
SimpliFiber Pro Sources 1310/1550 SM source				✓	✓	✓
SimpliFiber Pro Sources 1490/1625 SM source						✓
FindFiber Remote ID source		✓	✓	✓		
FT120 200x FiberViewer		✓				
FT500 FiberInspector			✓	✓		
VisiFault Visual Fault Locator		✓	✓	✓		
NFC-Kit-Box (fiber optic cleaning kit)				✓		
Professional durable carrying case	✓	✓	✓	✓	✓	✓



Legacy Test Reference Cords, Adapters and Mandrels



Model	Description
NF-MANDREL-50	Mandrel, 3 mm fiber cable, 50 μm (1)
NF-MANDREL-625	Mandrel, 3 mm fiber cable, 62.5 μm (1)
NFA-FC	FC test adapters – set of two
NFA-LC	LC test adapters – set of two
NFA-SC	SC test adapters – set of two
NFA-ST	ST test adapters – set of two
NFB1/2-LC/ST	Kit of duplex MM 62.5 μm and 50 μm test cords with LC and ST adapters
NFK1-DPLX-FC	Duplex MM 62.5 μm test reference cords for FC adapter – set of two
NFK1-DPLX-LC	Duplex MM 62.5 μm test reference cords for LC adapter – set of two
NFK1-DPLX-SC	Duplex MM 62.5 μm test reference cords for SC adapter – set of two
NFK1-DPLX-ST	Duplex MM 62.5 μm test reference cords for ST adapter – set of two
NFK1-MANDREL-KIT	Kit, mandrel, 3 mm fiber cable, 50 μm and 62.5 μm
NFK2-DPLX-FC	Duplex MM 50 μm test reference cords for FC adapter – set of two
NFK2-DPLX-LC	Duplex MM 50 μm test reference cords for LC adapter – set of two
NFK2-DPLX-SC	Duplex MM 50 μm test reference cords for SC adapter – set of two
NFK2-DPLX-ST	Duplex MM 50 μm test reference cords for ST adapter – set of two
NFK3-DPLX-FC	Duplex SM test reference cords for FC adapter – set of two
NFK3-DPLX-LC	Duplex SM test reference cords for LC adapter – set of two
NFK3-DPLX-SC	Duplex SM test reference cords for SC adapter – set of two
NFK3-DPLX-ST	Duplex SM test reference cords for ST adapter – set of two
NFK1-SMPLX-SC	(2) Simplex MM 62.5 um test reference cords for SC adapter
NFK1-SMPLX-LC	(2) Simplex MM 62.5 um test reference cords for LC adapter
NFK1-SMPLX-ST	(2) Simplex MM 62.5 um test reference cords for ST adapter
NFK2-SMPLX-SC	(2) Simplex MM 50 um test reference cords for SC adapter
NFK2-SMPLX-LC	(2) Simplex MM 50 um test reference cords for LC adapter
NFK2-SMPLX-ST	(2) Simplex MM 50 um test reference cords for ST adapter
NFK3-SMPLX-SC	(2) Simplex SM test reference cords for SC adapter
NFK3-SMPLX-LC	(2) Simplex SM test reference cords for LC adapter
NFK3-SMPLX-ST	(2) Simplex SM test reference cords for ST adapter



Fiber QuickMap™



As a new category of enterprise fiber troubleshooter that leapfrogs the limited capability troubleshooters currently on the market, the Fiber QuickMap quickly and efficiently locates connections and breaks in multimode fiber with the press of one-button. By instantly (six second typical test time) providing distances to failures such as high loss and high reflectance incidents, it is the must-have troubleshooter for any technician who works with fiber in datacenters.

- **One-button troubleshooting**—no lengthy set-up necessary
- **Six-second test time**—no more blind troubleshooting that can last up to hours
- **Locate high loss incidents or breaks**—find the most common causes of fiber failure

Model	Description	Gold 1YR
FQM-MAIN	Fiber QuickMap mainframe with carrying pouch	GLD-FQM
FQM-KIT	Fiber QuickMap Kit with SC/LC 50 μm Launch Fiber, Interchangeable LC Adapter and carrying pouch	GLD-FQM
FTS900	Fiber QuickMap Kit with test reference cords (50 and 62.5 μm for both SC/SC and SC/LC), VisiFault Visual Fault Locator and carrying case	GLD-FQM
FTS1000	Fiber QuickMap Troubleshooter Kit with test reference cords (50 and 62.5 μm for both SC/SC and SC/LC), VisiFault Visual Fault Locator, and SimpliFiber Pro power meter and multimode source and case	GLD-FQM-FTK

\*For launch fibers and accessories please see page 20

To learn more visit: [www.flukenetworks.com/FiberQuickMap](http://www.flukenetworks.com/FiberQuickMap)



Fiber OneShot™ PRO

Fiber OneShot PRO takes the complexity out of singlemode fiber testing by analyzing fiber links and measuring faults up to 15 miles in less than five seconds. Whether you are troubleshooting FTTx, Hybrid Fiber Coax (HFC), fiber links between Central Offices, or working on regional or rural access networks, Fiber OneShot PRO is your first response to fiber trouble. This new class of tester fills the gap between a VFL and OTDR because it easily and quickly locates lossy connections, high-loss faults and breaks in a singlemode fiber network.

- Measures up to 75,459 feet (23,000 metres) of fiber in seconds
- Locate severe bends, high-loss splices, breaks and dirty connectors in singlemode fiber
- Save and store up to 99 test results for later review

Model	Description	Gold 1YR
FIBR-1-SHOTPRO	Fiber OneShot PRO only—includes meter, SC adapter, 22-language quick reference guide (QRG) on CD, manual and batteries	GLD-FOS-PRO
FIBR-1-KITPRO	Fiber OneShot PRO-SC-Kit—same as SHOTPRO plus UPC-UPC 2-meter patch cord, holster and case	GLD-FOS-PRO
FIBR-1-KITPRO-VF	Fiber OneShot PRO-SC-Kit with VisiFault—everything in the PRO-SC-Kit plus the VisiFault Visual Fault Locator with 2.5 mm universal adapter	GLD-FOS-PRO
FIBR-1-KITPRO-PM	Fiber OneShot PRO-SC-Kit with SimpliFiber Pro—everything in the PRO-SC-Kit plus SimpliFiber Pro optical power meter and SC adapter	GLD-FOS-MULTIKITS
FIBR-1-KITPRO-VFPM	Fiber OneShot PRO-SC-Kit with VisiFault and SimpliFiber Pro—includes meter, SC adapter, UPC-UPC 2-meter patch cord, holster, case, 22-language QRG on CD, manual and batteries plus the VisiFault Visual Fault Locator with 2.5 mm universal adapter and SimpliFiber Pro optical power meter and SC adapter	GLD-FOS-MULTIKITS
FIBR-1-PRO-LSPM	Fiber OneShot PRO-SC-Kit with SimpliFiber Pro and Light Source—includes meter, SC adapter, UPC-UPC 2-meter patch cord, holster, case, 22-language QRG on CD, manual and batteries plus SimpliFiber Pro optical power meter and 1310nm/1550nm Light Source	GLD-FOS-MULTIKITS

Accessories		
FIBR-AC-UAPC	1-meter UPC-APC launch cord	
FIBR-UPC-CORD-2M	2-meter UPC-UPC patch cord	

To learn more visit: [www.flukenetworks.com/theone](http://www.flukenetworks.com/theone)





Fiber Inspection and Cleaning



FI-7000 FiberInspector™ Pro

End-face contamination is a leading cause of fiber failures. Dirt and contaminant cause insertion loss and back-reflection that inhibits optical transmission and causes havoc with transceivers. Fiber loss and OTDR testing can expose this problem, but in many cases, dirty connections make fiber testing time consuming and inaccurate.

Since dirt can be an issue before, during, or after fiber optic certification testing, and migrate from one end-face to another upon mating, both sides of any connection must always be cleaned and inspected. Further, mating contaminated connectors can cause permanent damage as microscopic debris is crushed between end-faces in physical contact. Even factory terminated patch cords or pigtails must be inspected as protective caps do not keep end-faces clean. Avoiding this common cause of failure, starts with inspecting the end-face and eliminating any contamination before insertion into a bulkhead or piece of equipment.

The FI-7000 FiberInspector Pro allows you to inspect and certify end-faces in 2 seconds so you can get the job done the first time. Automated PASS/FAIL certification take the guess work out of fiber inspection so anyone can be a fiber expert.

- Automated Pass/Fail certification of fiber end-faces
- Graphical indication of problem areas due to contamination, pits, chips, and scratches
- Certify to industry standards—IEC 61300-3-35
- Eliminate human subjectivity from end-face measurements

Model	Description	Gold 1YR	Gold 3YR
FI-7000	FiberInspector Pro	GLD-FI-7000	GLD3-FI-7000
FI-7000-MPO	FiberInspector Pro w/MFO and cleaning	GLD-FI-7000-MPO	GLD3-FI-7000-MPO
FI-1000-KIT	FI-1000 USB Fiber Inspection Video Probe with selective bulkhead and video probe tips.	GLD-FI	—
FI-1000	FI-1000 FiberInspector USB video probe for Versiv platform.	GLD-FI	—

Accessories

Model	Description
FI1000-SCFC-TIP	SC and FC bulkhead video probe tip
FI1000-LC-TIP	LC bulkhead video probe tip
FI1000-ST-TIP	ST bulkhead video probe tip
FI1000-MU-TIP	MU bulkhead video probe tip
FI1000-E2KAPC-TIP	E2000/APC bulkhead video probe tip
FI1000-SCAPC-TIP	SC/APC bulkhead video probe tip
FI1000-E2K-TIP	E2000 bulkhead video probe tip
FI1000-LCAPC-TIP	LC/APC bulkhead video probe tip
FI1000-2.5-UTIP	2.5 mm universal video probe tip for patch cords
FI1000-1.25-UTIP	1.25 mm universal video probe tip for patch cords
FI1000-2.5APC-UTIP	2.5 mm APC universal video probe tip for patch cord
FI1000-MPO-UTIP	MPO probe tip and translator knob for patch cords and bulkheads
FI1000-MPOAPC-UTIP	MPO/APC probe tip and translator knob for patch cords and bulkheads
FI1000-1.25APC-TIP	1.25 mm APC universal video probe tip for patch cords
FI1000-MPOAPC-RT	MPO/MTP APC replacement tip with no translator knob
FI1000-MPO-RT	MPO/MTP replacement tip with no translator knob



FiberInspector™ Mini Video Microscope

The FiberInspector Mini video microscope enables inspection of end-faces on all types of installed fiber. The portable video microscope projects a crisp, clear image of microscopic debris and end-face damage.

- The exceptionally convenient FiberInspector Mini uses a 200x magnification probe sufficient for inspecting both multimode and singlemode fiber
- Quickly determines whether fiber connectors on a hardware device are clean and in good condition without disassembling the device

Model	Description	Gold 1YR
FT500	FiberInspector Mini Video Microscope	GLD-FTINSPECTOR
FT525	FiberInspector Mini and Cleaning Kit	GLD-FTINSPECTOR

Accessories

Model	Description
NFM110	Accessory tip set for FiberInspector Mini
NF390	APC (Angled Physical Connector) video adapter probe for FiberInspector Mini
NFM120	Rechargeable battery for FiberInspector Mini (NIMH) for FiberInspector Mini

To learn more visit: [www.flukenetworks.com/fiberinspectormini](http://www.flukenetworks.com/fiberinspectormini)



FiberViewer™ Fiber Microscope

The FiberViewer fiber microscope ensures a termination is clean and ready for optical transmission. Inspect multimode and singlemode fiber end-faces, and protect your eyes with the built-in safety filter.

- FT120 offers 200X magnification, FT140 offers 400X magnification

Model	Description
FT120	FiberViewer, 200X
FT140	FiberViewer, 400X
NF350	1.25 mm universal microscope adapter

To learn more visit: [www.flukenetworks.com/fiberviewer](http://www.flukenetworks.com/fiberviewer)



VisiFault™ Visual Fault Locator

The laser-powered VisiFault™ Visual Fault Locator (VFL) traces fibers, verifies continuity and polarity, and helps find breaks in cables, connectors and splices. Continuous and flashing modes for easier identification. Compatible with 2.5 mm and 1.25 mm connectors for easy connection.

- Bright red visible laser light source, features continuous and flashing modes
- Accelerates end-to-end fiber continuity checks
- Speeds fiber tracing and identification
- Aids in location of fiber faults including tight bends, breaks and bad connectors

Model	Description
VisiFault	VisiFault Visual Fault Locator with 2.5 mm universal adapter
NF380	1.25 mm Universal VisiFault Adpater

To learn more visit: [www.flukenetworks.com/visifault](http://www.flukenetworks.com/visifault)





Fiber Optic Cleaning Kits

Contaminated end-faces are the #1 cause of fiber link failure. Prevent this common problem with Fluke Networks’ Fiber Optic Cleaning Kits and Components. These precision fiber optic cleaning kits and components allow effective removal of all contaminants from end-faces on both patch cords and inside ports.

- Everything needed for precision cleaning of end-faces on both patch cords and inside ports
- Compact form factor options available. Specially formulated solvent dissolves contaminants, neutralizes static charge and encapsulates particles for removal
- A range of wiper swabs enable decontamination of all styles of fiber optic connections
- Use the convenient and rugged carrying case to store all of the cleaning components

Model	Description
NFC-Kit-Case	Fiber Optic Cleaning Kit—including cleaning cube with wipes, ten cards with sealed cleaning zones, solvent pen, 2.5 mm port cleaning swabs and 1.25 mm port cleaning swabs in a rugged carrying case
NFC-Kit-Box	Fiber Optic Cleaning Kit—including cleaning cube with wipes, five cards with sealed cleaning zones, solvent pen and 2.5 mm port cleaning swabs
NFC-Cube	Cleaning cube with wipes—cleans up to 500 end-faces
NFC-Cards-5pack	5 cards with 12 sealed cleaning zones each—perfect for troubleshooting
NFC-SolventPen	Special solvent dispensed from pen (9 g)
NFC-Swabs-1.25mm	LC and MU port cleaning swabs (25 count)
NFC-Swabs-2.5mm	SC, ST, 2.5 mm port cleaning swabs (50 count)
NFC-Case	Carrying case for cleaning accessories
NFC-IBC-1.25mm	OneClick cleaners for 1.25 mm LC and MU connector and patch cord (5 qty)
NFC-IBC-2.5mm	OneClick cleaners for 2.5 mm SC, ST, FC connector and patch cord (5 qty)
NFC-IBC-MPO	OneClick cleaners for MPO/MTP connector (5 qty)
NFC-KIT-CASE-E	Enhanced Fiber Optic Cleaning Kit—including (1) OneClick cleaner for 1.25mm connector, (1) OneClick cleaner for 2.5mm connector, (1) OneClick cleaner for MPO/MTP cleaner, a solvent pen, a cleaning cube and a softcase
FT525	FiberInspector Mini and Cleaning Kit

To learn more visit: [www.flukenetworks.com/fibercleaning](http://www.flukenetworks.com/fibercleaning)



Tools and Test Kits

Fluke Networks offers a wide range of network installation tools—each one designed to streamline the network installation job

Fluke Networks offers the most reliable set of network installation tools on the market – each one designed to streamline the network installation job. We have all the essential tools you need for installation and termination of high-performance voice, data and video networks. The JackRapid™ Termination Tool saves time and increases accuracy by seating and terminating all wires at once with a simple squeeze of the handle. The Pro-Tool Kits combine all professional tools you need to cut, strip, clean and connect network phone and data lines to blocks and jacks. Our world-renowned punchdown tools, with a variety of interchangeable blades, deliver high-quality, accurate terminations on the first punch. Industry standard Electrical Contractor Telecom Kits offer all the telecommunications tools and test equipment technicians need in one durable case.

JackRapid™ Termination Tool	32	D-Snips™	36
Impact Tools	33	Electrician's Snips	36
Blades	34	Cable Strippers	37
Pro-Tool™ Kits	35	Need-L-Lock™ Crimping Pliers	37
Electrical Contractor Telecom Kits	35	Probe Pic	37
Modular Crimper	36	Can Wrench	37
Cable Splicing Knife	36		





JackRapid™ Termination Tool

The JackRapid termination tool is the industry’s most innovative and time-saving installation tool. JackRapid allows you to terminate jacks eight times faster than traditional impact tools—with accuracy that’s unmatched. The patented jack termination tool seats and terminates all wires simultaneously with one squeeze of an ergonomic handle. The built-in blade cuts off the excess wire after it is seated in the connector, eliminating the need for a secondary trim step. Simple, one-handed operation reduces hand fatigue. With JackRapid, you’ll never punch into the palm of your hand or through drywall again.

- Cuts installation time—easy-to-use handle, seats and cuts all wires at once, saving you up to two minutes installation time per jack
- High-quality, consistent terminations—no more compromised connections and wasted jacks
- Simple, one-handed operation with an ergonomically designed handle reduces hand fatigue

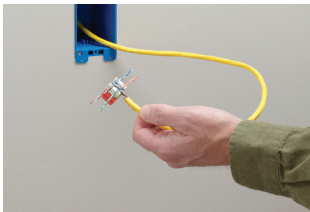
Model	Description
JR-LEV-1	JackRapid termination tool (for Leviton 41106, 41108, 5G108)
JR-LEV-1-H	JackRapid replacement blade head (for Leviton 41106, 41108, 5G108)
JR-SYS-UNI-1	JackRapid termination tool (for Systimax MPS100E, C5,M1BH and Uniprise UNJ600/500/300)
JR-SYS-UNI-1-H	JackRapid replacement blade head (for Systimax MPS100E, C5, M1BH and Uniprise UNJ600/500/300)
JR-LEV-2	JackRapid termination tool (for Leviton 61110, 5G110, 6110G)
JR-LEV-2-H	JackRapid replacement blade head (for Leviton 61110, 5G110, 6110G)
JR-SYS-2	JackRapid termination tool (for Systimax MGS400, MGS500, MFP420, MFP520)
JR-SYS-2-H	JackRapid replacement blade head (for Systimax MGS400,MGS500, MFP420, MFP520)
JR-ORT-2	JackRapid termination tool (for Ortronics TJ5E00, TJ600, TJ610)
JR-ORT-2-H	JackRapid replacement blade head (for Ortronics TJ5E00,TJ600, TJ610)
JR-ADC-2	JackRapid termination tool (for ADC KM8, Copper Ten®)
JR-ADC-2-H	JackRapid replacement blade head (for ADC KM8, Copper Ten)
JR-ERGOHANDLE	JackRapid ergonomic handle
JR-PAN-2	JackRapid termination tool (for Panduit NK688M)
JR-PAN-2-H	JackRapid replacement blade head (for Panduit NK688M)

To learn more visit: [www.flukenetworks.com/jackrapid](http://www.flukenetworks.com/jackrapid)

Get accurate terminations and clean, consistent cuts every time with the JackRapid Termination Tool.



1. Strip cable jacket with a standard cable stripper or the built-in cable stripper.



2. Determine wiring scheme. Dress all four pairs (eight wires).



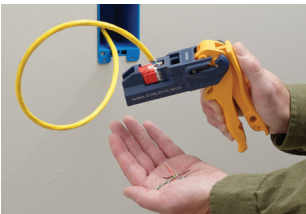
3. Insert jack in JackRapid front first with IDC slots facing blades of JackRapid.



4. Ensure jack is completely and securely inserted in jack holder bed with IDC slots facing the blades.



5. Pull trigger completely and remove excess wire prior to releasing trigger.



6. Wires will be seated and cut for a solid termination.



D914™S Impact Tool

SoftTouch D914S Impact Tool offers a new ergonomic design with a soft rubber handle for better grip and rounded edges to absorb more of the impact recoil. Includes built-in probe pic/spudger and torque, allowing you to choose from high-and low-impact settings.

- Industry standard, internationally accepted with lifetime warranty
- Hook and spudger tools are built into the handle
- Automatic spring handle—choose low impact for 24/26 gauge wire or high impact for 22-gauge wire
- Accepts Phillips-head or flat screwdriver blade

To learn more visit: [www.flukenetworks.com/d914](http://www.flukenetworks.com/d914)

Model	Description
10061000	D914S Impact Tool
10061100	Tool with EverSharp 66 blade
10061110	Tool with EverSharp 110 blade
10061501	Tool with EverSharp 110, EverSharp 66 blade and free screwdriver blade
10061503	Tool with BIX and EverSharp 66/110 cut blade
10061810	Tool with EverSharp 66/110 blade



D914™ Impact Tool

The D914 Impact Tool is the only punchdown tool to combine torque and impact. It combines two versatile tools, the hook and spudger, into the handle. 66/110 blades available.

- Ensures clean, smooth terminations ready for optical transmission
- Industry standard, internationally accepted with lifetime warranty
- Hook and spudger tools are built into the handle
- Automatic spring handle—choose low impact for 24/26 gauge wire or high impact for 22-gauge wire
- Accept Phillips-head or flat screwdriver blade

To learn more visit: [www.flukenetworks.com/d914](http://www.flukenetworks.com/d914)

Model	Description
10051000	D914 Impact Tool
10051100	Tool with EverSharp 66 blade
10051110	Tool with EverSharp 110 blade
10051120	Tool with EverSharp 110 and EverSharp 66 blade
10051501	Tool with EverSharp 110, EverSharp 66 blade and free screwdriver blade



D814™ Impact Tool

The D814 Impact Tool is a deluxe, all-in-one, telecom punchdown tool and comes with the 66/110 blade. Impact wheel has high and low settings. Automatic spring mechanism provides the right impact to seat and/or terminate wires.

- Industry standard with lifetime warranty
- Accepts standard industry blades
- Lightweight and easy-to-use
- Adjustable spring impact mechanism allows low impact for 24/26 gauge wire or high impact for 22-gauge wire

To learn more visit: [www.flukenetworks.com/d814](http://www.flukenetworks.com/d814)

Model	Description
10054000	D814 Impact Tool
10055000	Tool with EverSharp 66 blade
10055110	Tool with EverSharp 110 blade
10055200	Tool with EverSharp 110 and EverSharp 66 blade
10055501	Tool with EverSharp 110, EverSharp 66 blade and free Wood Screw Starter Punch blade
10055503	Tool with BIX and Eversharp 66/110 cut blade



D-Impactor™ 5-Pair Impact Tool

The D-Impactor 5-pair impact tool easily cuts and terminates five copper pairs on a 110 block. This rugged, easy-to-use tool saves time and minimizes hand stress. The patented individually molded blades eliminate the chance of metallic shorts ensuring optimal performance of your network. Lifetime warranty.

- Single reversible blade part
- Ease of use and reversing of cutting blade
- Fewer moving parts allow for smoother push down, less hand stress

To learn more visit: [www.flukenetworks.com/dimpactor](http://www.flukenetworks.com/dimpactor)

Model	Description
10059000	D-Impactor (five-pair 110 impact tool)
10059030	D-Impactor replacement blade



EverSharp™ Blades

Fluke Networks offers three EverSharp blade designs: the EverSharp 66/110 cut blade, the EverSharp 110 blade and the EverSharp 66 blades. Through special processing of the metal, these high performance blades stay sharper longer than other competitive blades. These blades fit the D914S, D914 and D814 punchdown tools.

Model	Description
10056500	EverSharp 66 blade
10176500	EverSharp 110 blade
10178600	EverSharp 110/66 cut blade



Blade Storage Kit

This unique blade storage case helps prevent loss, misplacement and damage of impact blades by keeping them all together in one convenient hard case. They are sized to fit neatly into shirt or pants pocket or clipped onto belt or tool pouch.

Model	Description
10979003	66 blade kit (2-66 blades, 1-630 blade, 1-Wood Screw Starter blade)
10979004	110 blade kit (2-110 blades, 1-66 blade, 1-Wood Screw Starter blade)
10979002	Blade storage case only

Blades

Fluke Networks increases the versatility and flexibility of its line of impact tools by offering a wide variety of interchangeable blades that permit each tool to perform multiple functions. From our high-performance EverSharp blades, to our unique blade storage kit cases, Fluke Networks has the blades you need to terminate blocks and jacks quickly.

					
10056500 EverSharp 66 blade	10057000	10176000 110 blade	10436001	10465001	10645001
10056000 66 blade	630 blade	10176500 EverSharp 110 blade	Centerpunch blade	3M System D blade	Wood screw starter punch
10056225 <b>66 blade, bulk</b> (must be ordered in multiples of 100)		10176225 <b>110 blade, bulk</b> (must be ordered in multiples of 100)			
					
10565000	10565110	10665000	10051200	10051300	
Cut blade, compatible with Krone/ADC	Cut blade, compatible with Krone/ADC, 110	BIX blade	<b>Screwdriver blade</b> (D914 or D914S only)	Torque Adapter blade	

To learn more visit: [www.flukenetworks.com/blades](http://www.flukenetworks.com/blades)



Pro-Tool™ Kits

All the professional tools you need to cut, strip, clean and connect network phone and data lines to blocks and jacks. Bundled together in our sleek form-fitting PVC Dur-A-Grip™ tool pouch—holds your tools securely inside, even upside down. Five tool kit combinations to choose from to meet a multitude of applications.

- All kits include ergonomically designed Dur-a-Grip pouch for convenient tool storage on belt
- D914™ and D814™ industry standard punchdown tools make for solid terminations
- Easy-to-use cable stripper quickly rings and slits many types of cable
- Cut and strip wire cleaner and faster with the Electrician’s D-Snips

To learn more visit: [www.flukenetworks.com/protocol](http://www.flukenetworks.com/protocol)

Pro-Tool Kit Model	IS60	IS50	IS40
D914S impact tool	✓	✓	
D814 impact tool			✓
Electrician’s D-Snips	✓	✓	✓
Cable stripper	✓	✓	✓
Mini Maglite®	✓		
Dur-a-Grip pouch	✓	✓	✓
EverSharp 66/110 cut blade	✓	✓	✓
Probe pic			✓

Model	Description
11291000	IS40 Pro-Tool kit
11291400	Pro-Tool kit IS40 pouch only
11292000	IS50 Pro-Tool kit
11292400	Pro-Tool kit IS50 pouch only
11293000	IS60 Pro-Tool kit
11293400	Pro-Tool kit IS60 pouch only

Electrical Contractor Telecom Kits

Fluke Networks Electrical Contractor Telecom Kits are comprised of industry standard telecommunications tools and test equipment. Contents include D814™ impact tool, cable stripper, probe pic, Electrician’s D-Snips, standard 4-wire modular adapter and EverSharp™ 66/110 cut blade. Soft carrying case included for easy organization.

- Choose either Kit I with TS®30 Test Set or Kit II with Pro3000 Analog Tone and Probe
- D814 industry standard punchdown tool for reliable terminations
- EverSharp 66/110 cut blade provides flexibility for different block and jack terminations
- Cable stripper quickly rings and slits many types of cable
- Use the probe pic to check for loose or damaged connections
- Cut and strip wire cleaner and faster with the Electrician’s D-Snips
- Connect to jacks for testing with the standard 4-wire modular adapter
- A soft zippered pouch keeps your tools all in one convenient place

To learn more visit: [www.flukenetworks.com/ectkit](http://www.flukenetworks.com/ectkit)



Electrical Contractor Telecom Kit	Telecom Kit I	Telecom Kit II
TS30 Test Set with angled bed-of-nails cord	✓	
Pro3000 analog tone and probe		✓
D814 impact tool	✓	✓
Electrician’s D-Snips	✓	✓
Cable stripper	✓	✓
EverSharp 66/110 cut blade	✓	✓
Standard 4-wire modular adapter	✓	✓
Probe pic	✓	✓

Model	Description
11290000	Electrical Contractor Telecom Kit I (with TS30 Test Set)
11289000	Electrical Contractor Telecom Kit II (with Pro3000 analog tone and probe kit)
11289400	Soft case, Electrical Contractor Telecom kit





Modular Crimper

This is an all-in-one crimping tool for WESS type 6 and 8-position modular telephone plugs. Crimps 8-position RJ-45 connectors and 4 and 6-position RJ-11 and RJ-12 connectors.

- Embedded flat cable cutter and stripper

To learn more visit: [www.flukenetworks.com/crimper](http://www.flukenetworks.com/crimper)

Model	Description
11212530	Modular crimper



Cable Splicing Knife

This cable splicing knife is the perfect tool for splitting cable sheaths. Soft, no-slip, easy-to-grip handle and cutlery-steel blade for durability and long-lasting blade edge.

- Short blade (1.75 in) for strength
- Cutlery-steel blade for durability
- Cuts various insulation types

To learn more visit: [www.flukenetworks.com/knife](http://www.flukenetworks.com/knife)

Model	Description
44400000	Cable splicing knife



D-Snips™

The electrician's D-Snips offer a unique ergonomically-designed handle that leverages your power.

- Ergonomic design provides 1½ times the cutting force with half the effort
- High-quality forged steel construction for strength and durability
- File and scraper on both blades for cleaning wire
- Notched blade for stripping 19 and 23-gauge wire
- Cuts up to 16-gauge solid and 12-gauge stranded wire

To learn more visit: [www.flukenetworks.com/dsnips](http://www.flukenetworks.com/dsnips)

Model	Description
44300000	D-Snips



Electrician's Snips

These versatile electrician's snips feature a file and scraper on both blades for easy wire cleaning. They also feature a handy notched scissor blade for quickly stripping 19 and 23-gauge wire.

- High-quality forged steel construction for strength and durability
- File and scraper on both blades for cleaning wire
- Notched blade for stripping 19 and 23-gauge wire
- Cuts up to 16-gauge solid and 12-gauge stranded wire
- Serrated blade for non-slip wire cutting

To learn more visit: [www.flukenetworks.com/snips](http://www.flukenetworks.com/snips)

Model	Description
44500000	Electrician's snips



Cable Strippers

This line of cable strippers includes a double slotted cable stripper for 22/24 AWG wire installation and a coax stripper to perform 2-level and 3-level stripping of RG58/59 coaxial cables. We also offer a combo stripper that cuts and rings Teflon®, smoothly slits fiber, copper and coaxial cables and rings 25-100 pair cable.

- Full line of cable strippers for any job
- Round cable stripper for a variety of flexible round cable
- Coax strippers with two or three levels

To learn more visit: [www.flukenetworks.com/strippers](http://www.flukenetworks.com/strippers)

Model	Description
11230002	Cable stripper (round cable)
44210013	Double slotted stripper with cutter, 22/24 gauge
44200013	Double slotted stripper 22/24 gauge
11231257	Coax stripper, 2-level
11231255	Coax stripper, 2 and 3-level
44210015	Double-slotted stripper with cutter, 24/26 gauge



Need-L-Lock™ Crimping Pliers

The Need-L-Lock pliers' patented four-in-one tool combines UR/UY/UG connector crimper with needle-nose pliers so you can carry one less tool on your belt. Aligned crimping jaws come down square ensuring a solid connection. Jaws are grooved to provide a better grip on wires and feature a built-in cutter and wire stripper.

- Needle nose pliers
- UR/UY/UG connector crimper
- Wire stripper hole
- Built-in side cutter
- Rubber coated handles for non-slip grip

To learn more visit: [www.flukenetworks.com/pliers](http://www.flukenetworks.com/pliers)

Model	Description
11294000	Need-L-Lock crimping pliers



Probe Pic

This handy, pocket-sized insulation probe is ideal for checking for loose or damaged connections or to spread apart wires for direct access. Its compact size also makes it perfect for using the pic end for tracing or pulling wires from a bunch.

- Trace and pull wires with the pic end
- Check for loose or damaged connections
- Spread apart wires for direct access

To learn more visit: [www.flukenetworks.com/pic](http://www.flukenetworks.com/pic)

Model	Description
44600000	Probe pic, 105 degree



Can Wrench

This can wrench allows universal access to telephone boxes and pedestals. Open telephone box fasteners and tightens nuts on binding post terminals.

- Two hex head sockets (7/16 inch and 3/8 inch)
- Color-coded socket ends for quick size identification
- Wrench body constructed of tough, impact resistant and abrasion resistant material
- Socket ends guaranteed not to split or break up to a maximum torque of 45 pounds
- Two models available with wire stripper in handle (22 or 24 gauge)

To learn more visit: [www.flukenetworks.com/wrench](http://www.flukenetworks.com/wrench)

Model	Description
44007000	Can wrench, hex head
44507003	Can wrench with stripper, 22 gauge
44507004	Can wrench with stripper, 24 gauge
10660001	Security key insert





# Test and Troubleshoot

## Complete line of portable network testers to give frontline technicians vision into their LAN, WLAN and VLAN networks

Today's networks are typically stable. The problem is they aren't static. Management and users are constantly demanding new technologies, new services and better performance, which inevitably requires changing infrastructure, deploying new applications, and dealing with security. With Fluke Networks family of portable network testers, frontline technicians get a unique view into their LAN, WLAN, and VLAN networks. These tools help network professionals clearly see all aspects of their network. Moves, adds, and changes as well as complex troubleshooting tasks are sped up with the use of these testers. Take these tools anywhere, anytime, to isolate any problem... fast.

- LinkRunner™ AT Network Auto-Tester
- OneTouch™ AT Network Assistant
- LinkSprinter™ Network Tester
- AirCheck™ Wi-Fi Testers

39  
40  
42  
43



### LinkRunner™ AT Network Auto-Tester

The LinkRunner AT Network Auto-Tester is the fastest way to solve network connectivity problems. This rugged, handheld network tester takes the guesswork out of troubleshooting with its complete one-button AutoTest. The AutoTest performs a standardized set of connectivity tests in seconds, enabling you accurate and quick identification and isolation of network problems.

- **Fast answers:** 3-second boot-up and 10-second AutoTest to isolate problems fast
- **Verify Ethernet connectivity:** Validate speed, duplex, signal strength, connection type and PoE
- **Copper and fiber ready:** Troubleshoot 10/100/1000BASE-T and 100/1000BASE-X optical fiber networks (LRAT-2000)
- **Discover nearest switch and VLAN:** View the VLAN ID and the name, model, slot and port of the nearest switch
- **Measure TruePower™ Power over Ethernet (PoE):** Quickly validate PoE performance by drawing actual power up to the 802.3at standard 25.5W (LRAT-2000)
- **Verify key device availability:** Validate the connection to user-defined devices and TCP applications.
- **Document results:** Save test results on the tester, then download and print reports from a PC

Model	Description	Gold 1YR	Gold 3YR
LRAT-1000	LinkRunner AT 1000 tester with AA batteries, LinkRunner Manager software CD, USB cable, Getting Started Guide and soft case.	GLD-LRAT	GLD3-LRAT
LRAT-2000	LinkRunner AT 2000 tester with Li-ion battery, Wireview Cable ID #1, LinkRunner Manager software CD, USB cable, RJ-45 coupler, Getting Started Guide and soft case.	GLD-LRAT	GLD3-LRAT
LRAT-2000-KIT	LinkRunner AT 2000 tester and accessories, IntelliTone Pro 200 Probe, WireView Cable IDs # 2-6, holster, and deluxe carrying case.	GLD-LRAT	GLD3-LRAT
LRAT-2000-5PK*	5 LinkRunner AT 2000 testers and accessories, 5 sets WireView Cable IDs #2-6	GLD-LRAT (x5)	GLD3-LRAT (x5)
LRAT-2000-10PK*	11 LinkRunner AT 2000 testers and accessories, 11 sets WireView IDs #2-6	GLD-LRAT (x11)	GLD3-LRAT (x11)
ACK-LRAT2000	AirCheck Wi-Fi tester and accessories, LinkRunner AT 2000 tester and accessories, AirCheck external directional antenna, spare Li-ion battery for either AirCheck or LinkRunner AT, IntelliTone Pro 200 probe, WireView Cable IDs #2-6, LinkRunner AT holster, AirCheck holster, and deluxe carrying case.	GLD-ACK and GLD-LRAT	GLD-ACK-3YR and GLD3-LRAT
LRAT-2000-FTK	LinkRunner AT 2000 tester and accessories, SimpliFiber Pro optical power meter, 850/1300 multimode source, VisiFault VFL, FT120 FiberViewer, FindFiber Remote ID source, carrying case and SC, ST, and LC power meter adapters.	GLD-LRAT and GLD-SFPRO	GLD3-LRAT GLD3-SFPRO
LRAT2-CIQ-GSV	CableIQ 100 Qualification Tester and accessories, LinkRunner AT 2000 tester and accessories, IntelliTone Pro 200 Probe, CableIQ Remote Identifiers #2-7	GLD-CIQ and GLD-LRAT	GLD3-CIQ and GLD3-LRAT

\*Available only in the US, Canada, Europe, the Middle East and Africa

Model Differences	LinkRunner AT 1000	LinkRunner AT 2000
WireView Cable Identifier #1	Optional	✓
Battery	AA	Li-ion rechargeable
Reports	10	50
100/1G Fiber		✓
IPv6 Support		✓
TruePower PoE Test		✓
Packet Reflection Mode		✓

To learn more visit: [www.flukenetworks.com/LinkRunnerAT](http://www.flukenetworks.com/LinkRunnerAT)





OneTouch™ AT Network Assistant

An automated all-in-one handheld tester for troubleshooting end-user Ethernet, Wi-Fi, network service and application performance. Standardize troubleshooting with network-specific AutoTest profiles. View results on-site in real-time. Upload results to the cloud and use the cloud service to view performance over a period of time. Discover devices, measure end-to-end path performance, capture packets, and monitor VoIP traffic inline.

- **All-in-one:** a handheld tester combining Ethernet, Wi-Fi, network service and network application performance measurement in one tool
- **Accurate:** create and save site-specific test profiles that emulate how client devices experience the network, including local, intranet and cloud-based services and applications
- **Consistent:** everyone in the network support organization uses the same preconfigured test profiles to encourage standardization and best practices
- **Fast:** all tests within a profile are run and graded automatically with the touch of a button, enabling identification of the most common problems in about a minute
- **Immediate:** view results on the tester to solve persistent problems in the real-time
- **Long-term:** launch an autonomous, repetitive test-and-upload process to collect results over time—testing is self-contained, requiring no user interaction, and test results are uploaded to the OneTouch AT Cloud Service for storage and analysis
- **Cloud Service:** view color-coded charts of performance over time to troubleshoot intermittent problems using OneTouch AT Cloud Service analytics and a web-connected device—view results when and where it is convenient
- **Discovery:** see connected devices, key device attributes, connection paths and problems with automated wired and Wi-Fi discovery and analysis
- **Performance:** measure end-to-end wired and Wi-Fi path performance between the tester and a remote to validate and document link readiness and SLA compliance
- **VoIP:** troubleshoot desktop VoIP problems in real-time with inline call monitoring and logging
- **Packets:** extensive capture capability including inline capture between a client and the network without Taps or mirror ports, Wi-Fi capture, inline VoIP capture and AutoTest packet capture
- **Versiv™:** expand testing capabilities by adding new modules as needs evolve



Model	Description
1T-1000	OneTouch AT 1000 Network Assistant with Copper/Fiber LAN testing, includes module and Versiv mainframe, carry strap, AC adapter and line cord, wiremap adapter #1, RJ-45 coupler, RJ-45 patch cable, accessories pouch, carrying case, getting started guide, and resource CD
1T-1500	OneTouch AT 1500 Network Assistant with Copper/Fiber LAN testing, Packet Capture and Advanced tests, includes module and Versiv mainframe, carry strap, AC adapter and line cord, wiremap adapters #1 - #6, RJ-45 coupler, RJ-45 patch cable, SD card, USB SD card reader, USB flash drive, two 1000BASE-SX SFP fiber transceivers, accessories pouch, carrying case, getting started guide, and resource CD
1T-2000	OneTouch AT 2000 Network Assistant with Copper/Fiber LAN testing and Wi-Fi testing, includes module and Versiv mainframe, carry strap, AC adapter and line cord, wiremap adapter #1, RJ-45 coupler, RJ-45 patch cable, external directional antenna with mounting clip, accessories pouch, carrying case, getting started guide, and resource CD
1T-3000	OneTouch AT 3000 Network Assistant with Copper/Fiber LAN testing, Wi-Fi testing, Packet Capture and Advanced tests, includes module and Versiv mainframe, carry strap, AC adapter and line cord, wiremap adapters #1 - #6, RJ-45 coupler, RJ-45 patch cable, SD card, USB SD card reader, USB flash drive, two 1000BASE-SX SFP fiber transceivers, external directional antenna with mounting clip, accessories pouch, carrying case, getting started guide, and resource CD
1T-3000-FI	OneTouch AT 3000 and FiberInspector™ Kit, includes a 1T-3000 plus a FI-1000 USB video probe with video probe tips
1T-3000-CSA	OneTouch AT 3000 and ClearSight™ Analyzer PC Software Kit, includes a 1T-3000 plus ClearSight Analyzer software.
1T-3000-LRAT2KIT	OneTouch AT 3000 and LinkRunner™ AT 2000 Kit, includes a 1T-3000 plus a LinkRunner AT 2000 Extended Test Kit
1T-3000-ACK-LRAT2	OneTouch AT 3000, AirCheck and LinkRunner AT Kit, includes a 1T-3000, an AirCheck™ Wi-Fi tester and a LinkRunner AT 2000 tester
1T-3000-0FP-QUAD	OneTouch AT Fiber Network Troubleshooting Kit, includes a 1T-3000 plus an OptiFiber Pro Quad OTDR module, four launch cables, two IBC fiber cleaners and an accessories carrying case
1T-1500-LRAT2	OneTouch AT 1500 and LinkRunner AT 2000 Kit, includes a 1T-1500 plus a LinkRunner AT 2000 Tester
1T-1500-2PK	Kit of two complete OneTouch AT 1500 testers

Model Differences	1T-1000	1T-1500	1T-2000	1T-3000
Wi-Fi Tests			✓	✓
Wi-Fi Accessories			✓	✓
Packet Capture		✓		✓
Performance Tests (requires a peer or reflector)		✓		✓
Advanced Tests (HTTP, FTP, IGMP, RTSP, SMTP)		✓		✓
Comprehensive accessories kit		✓		✓

To learn more visit: [www.flukenetworks.com/OneTouchAT](http://www.flukenetworks.com/OneTouchAT)



LinkSprinter™ Network Tester

An affordably priced pocket-sized network tester that identifies Ethernet problems in less than nine seconds. With its one-button auto-test design, smartphone integration, and automatic cloud storage of test data, the LinkSprinter helps the PC technician, system integrator, home networking enthusiast and other consumers identify, document, store and remedy Ethernet problems from the palm of their hand.

- Test results sent to the LinkSprinter Cloud Service
- Test details delivered to your phone or tablet browser¹
- Use the cloud service to store, manage, annotate and email test reports
- Color-graded LEDs identify problem domain to PoE, Link, DHCP, Gateway and Cloud connectivity

Model	Description
LSPRNTR-100	LinkSprinter 100 Network Tester, 2 AA batteries, lanyard, getting started guide
LSPRNTR-200	LinkSprinter 200 Network Tester, 2 AA batteries, lanyard, getting started guide

\*Available in select countries, to learn more visit [www.linksprinter.com](http://www.linksprinter.com)

Model Comparison	LSPRNTR-100	LSPRNTR-200¹
Battery/PoE powered	✓	✓
One button, tri-state LED user interface	✓	✓
Test results emailed to smartphone	✓	✓
Cloud service for results management	✓	✓
Embedded Wi-Fi hotspot for viewing test details using a smartphone (phone not included)		✓

To learn more visit: [www.flukenetworks.com/linksprinter](http://www.flukenetworks.com/linksprinter)

See what experts say about LinkSprinter!

*“5 out of 5 for making Ethernet testing not only more affordable but also easier.”*  
~ Networkworld.com

*“Every tech should have one of these in their bag.”*  
~ Eli the Computer Guy

*“It is ridiculously easy to run a test, works quickly, provides useful results and the Wi-Fi functionality with no app to install is brilliant!”*  
~ SmallNetBuilder.com

*“Wi-Fi functionality with no app to install is great!”*  
~ SmallNetBuilder

*“These are the kinds of things you should be doing everywhere. These are the kinds of things you should be doing every time.”*  
~ Enterprise Tech

*“Will make IT guys want one for their tool box or pocket.”*  
~ Gadgeteer

*“If you are needing an inexpensive and portable way to test connectivity, then you’ll love this device.”*  
~ Chambers Daily

*“Easy to use and feature-packed automated network test tool.”*  
~ HandyManHowTo

*“The Fluke LinkSprinter eliminated the guesswork and quickly identifies network troubles.”*  
~ HandyManHowTo



*“Fluke’s LinkSprinter 200 is our Editors’ Choice for network troubleshooting tools because it brings smart, simple testing capabilities in a reasonably affordable package.”*



AirCheck™ Wi-Fi Testers

The AirCheck Wi-Fi Tester suite of tools allows frontline technicians to resolve basic Wi-Fi issues in a timely manner in order to avoid costly rework. As platform choices have evolved over the last few years, with the AirCheck Wi-Fi Tester suite, Fluke Networks provides multiple platform choices (dedicated hardware, Windows and Android) to meet the needs for any user.

- First response Wi-Fi troubleshooting tools with simple and intuitive interfaces, specifically designed for frontline technicians to identify most common Wi-Fi issues quickly and efficiently
- Eliminate costly and time-consuming escalations by solving the most common WLAN issues assigned to frontline technicians
- An instant real-time view of the Wi-Fi (802.11a/b/g/n/ac) environment including network availability, utilization, Wi-Fi security settings and rogue devices to troubleshoot most common Wi-Fi issues
- Quickly identify and locate wireless clients and AP’s whether authorized or rogue
- One-button AutoTest quickly provides a pass/fail indication of the wireless environment and identifies common problems. See wireless network utilization by channel and quickly determine if it is 802.11 traffic or non-802.11 interference
- Single click Pass/Fail assessment of key end user applications such as web browsing, audio and video enabling technicians to confidently validate end-user experience
- Collect real-world data by performing true end-user experience (throughput testing) measurements resulting in accurate wireless deployments
- Achieve consistency by standardizing Wi-Fi deployment and Wi-Fi troubleshooting procedures enhancing productivity
- Fast, simple documentation of wireless troubleshooting results for quick trouble ticket resolution or escalation

Model	Description	Gold 1YR	Gold 3YR
AirCheck	AirCheck Wi-Fi Tester—including AirCheck tester, USB cable, soft case, Getting Started Guide, and CD with AirCheck Manager software and User Manual	GLD-ACK	GLD3-ACK
AirCheck-LE	Includes AirCheck tester, holster, external directional antenna, auto charger, getting started guide for Law Enforcement	GLD-ACK	GLD3-ACK
AM/A3000-US/WD/JP	AirCheck Wi-Fi Tester for Windows®: Includes software + 1 unit of AM/C1080-US or WD or JP,PROXIM ORINOCO 8494 802.11A/B/G/N USB ADAPTER	GLD-S3000	GLD3-S3000
AM/A3001G	AirCheck Wi-Fi Tester For Android	GLD-S3001G	GLD3-S3001G

Please note that not all features are supported across all products of the AirCheck Wi-Fi Tester family.

To learn more visit: [www.flukenetworks.com/content/aircheck-wi-fi-tester-product-family#Compare](http://www.flukenetworks.com/content/aircheck-wi-fi-tester-product-family#Compare).





# Monitoring, Analysis and Troubleshooting

## Get the complete picture for monitoring, analyzing and troubleshooting networks and applications

Managing today's networks requires a range of visibility—from overall network health, to end-user experience, to in-depth “on-the-wire” analysis. Performance needs to be monitored and root causes pinpointed for key devices, links and applications anywhere on the network.

To do this with confidence, you need a complete picture of what's happening on your network. Fluke Networks' family of analyzers delivers the breadth of visibility and depth of analysis you need for monitoring, analyzing and troubleshooting networks and applications.

- AirMagnet Spectrum ES™
- AirMagnet Spectrum XT
- AirMagnet VoFi Analyzer PRO
- AirMagnet Survey
- AirMagnet Enterprise
- AirMagnet WiFi Analyzer PRO
- Network Time Machine for Service Providers
- Network Time Machine™
- ClearSight™ Analyzer
- OptiView® XG Network Analysis Tablet
- Tap Solutions

45  
45  
46  
46  
47  
47  
48  
49  
49  
50  
52



### AirMagnet Spectrum ES™

AirMagnet Spectrum ES is a portable and affordable, professional-grade RF spectrum analyzer that speeds in-building cellular deployments. Rich spectrum graphs with next generation visualization and enhanced in-field productivity features provide intuitive network visibility needed to validate and troubleshoot at every project stage.

- Portability for rapid deployment with a USB-based spectrum adapter that can be used with any Windows based laptop or tablet
- Support for multiple technologies: GSM, CDMA, UMTS and LTE. Scans frequencies between 698 MHz and 2690 MHz
- Easy on the budget, allowing organization-wide deployment of the tool to accelerate execution of deployment and troubleshooting projects
- Get the job done right the first time and prevent costly rework by driving to root cause of network performance issues with zero-day Interference Intelligence to identify, classify and locate any interference source
- Intuitive user flow for verification and troubleshooting, thus lowering the learning curve and accelerating the project

Model	Version	Description	Gold 1YR	Gold 3YR
AM/A6001	1.0.2	3G/4G cellular deployment & troubleshooting spectrum analysis tool	GLD-S6001G	GLD-S6001-3Y-G

To learn more visit: [www.flukenetworks.com/enterprise-network/wireless-network/airmagnet-spectrum-es-cellular-spectrum-analyzer](http://www.flukenetworks.com/enterprise-network/wireless-network/airmagnet-spectrum-es-cellular-spectrum-analyzer)



### AirMagnet Spectrum XT

AirMagnet Spectrum XT is the first professional spectrum analyzer that combines and correlates in-depth RF analysis of non-Wi-Fi interference sources with real-time WLAN information. The result is quicker and more accurate WLAN performance troubleshooting. By viewing the impact of RF interference on the network's overall performance, network managers can pinpoint the root cause of the problem. The tool detects, identifies and helps physically locate non-Wi-Fi sources of interference that operate in the 2.4GHz, 4.9GHz and 5GHz frequency bands, such as Bluetooth, microwave ovens, cordless phones, digital video monitors, ZigBee devices, game controllers, RF jammers, wireless cameras, radars and more. It also minimizes troubleshooting effort and time by not having to interpret “squiggly lines” or manually match classification patterns, and instead be powered by the industry's largest classification database and auto pattern recognition that helps identify any interference source in the world.

- Visualize impact of RF interference on WLAN performance
- Automatically detect and identify WLAN and non-WLAN interference sources
- Physically locate RF interference sources

Model	Version	Description	Gold 1YR	Gold 3YR
AM/B4070	3.6.2	AirMagnet Spectrum XT (USB-based); spectrum analysis	GLD-S4070G	GLD-S4070-3Y-G

To learn more visit: [www.flukenetworks.com/enterprise-network/wireless-network/airmagnet-spectrum-xt](http://www.flukenetworks.com/enterprise-network/wireless-network/airmagnet-spectrum-xt)





AirMagnet VoFi Analyzer PRO

AirMagnet VoFi Analyzer is the industry’s only solution built for troubleshooting VoWLAN issues. It addresses all aspects of wireless voice and diagnoses problems rooted within the end-user’s phone, QoS, RF, WLAN, and even wired network problems associated with voice over Wi-Fi. AirMagnet VoFi Analyzer integrates with AirMagnet Survey software to additionally validate and optimize phone call quality.

- Detect any 802.11a/b/g voice-over-WLAN call
- Full call quality analysis of encrypted wireless voice traffic
- Automatically diagnose and troubleshoot over 60 types of wireless voice call problems

Model	Version	Description	Gold 1YR	Gold 3YR
AM/A2210	4.1	Mobile software tool for voice-over-wireless analysis and troubleshooting	GLD-S2210G	GLD-S2210-3Y-G

To learn more visit:  
[www.flukenetworks.com/enterprise-network/wireless-network/AirMagnet-VoFi-Analyzer](http://www.flukenetworks.com/enterprise-network/wireless-network/AirMagnet-VoFi-Analyzer)



AirMagnet Survey

AirMagnet Survey is the industry’s most accurate solution for planning and designing 802.11a/b/g/n/ac networks for optimal performance, security and compliance. It calculates the ideal quantity, placement and configuration of APs for a successful WLAN deployment. AirMagnet Survey plots actual end-user network performance metrics such as data rates, actual per-user throughput and packet losses and retries. This information provides a complete Wi-Fi “weather map of the environment.” AirMagnet Planner is built into AirMagnet Survey PRO, providing a single, seamless application with the industry’s most complete approach to wireless LAN design, deployment and ongoing optimization. With this integrated solution, AirMagnet Planner can be used to accurately design WLANs by modeling building construction materials/obstructions and 802.11 APs and visualizing coverage across multiple floors, then validating the results with real-world data in AirMagnet Survey PRO.

- Design and deploy the most accurate indoor and outdoor wireless LAN network (802.11n/a/b/g/ac) correctly the first time and prevent costly rework and IT complaints
- Collect real-world data by performing unique true end-user experience (WLAN throughput, data rates, retries, losses) measurements
- Confidently certify the network for any design/application requirements using customer-ready pass/fail assessment reports
- Customize reports enabling efficient hand over of results based on WLAN design/application requirements
- Minimize expensive wireless LAN performance impact due to RF interference sources by performing simultaneous spectrum analysis in a single walk through
- Simulate “What-if” scenarios to prevent or minimize costly repeat survey walks

Model	Version	Description	Gold 1YR	Gold 3YR
AM/B4010, AM/A4018, AM/A4012	8.7.0	Site survey and planning solution for designing and optimizing wireless networks	GLD-S4010G, GLD-S4018G, GLD-S4012G	GLD-S4010-3Y-G, GLD-S4018-3Y-G, GLD-S4012-3Y-G

To learn more visit: [www.flukenetworks.com/products/airmagnet-survey](http://www.flukenetworks.com/products/airmagnet-survey)



AirMagnet Enterprise

AirMagnet Enterprise is a full-time wireless IDS/IPS, WLAN and Cellular monitoring system that provides complete protection for all of a business’s wireless assets worldwide. The solution can automatically detect hundreds of threats, block and prevent attacks, trace and locate problems, capture event forensics, troubleshoot performance problems remotely and document and enforce compliance with internal and regulatory policies.

- Continuous monitoring of the entire WLAN and Cellular airspace
- Automatic detection and remediation of all wireless threats
- Trace, locate, map and capture forensics for any WLAN, Cellular, or RF event

Model	Version	Description	Gold 1YR
AM/A5505, AM/A5509, AM/A5225, AM/5220, AM/A5115, AM/A5106	10	24x7 wireless intrusion prevention, performance monitoring and remote troubleshooting	GLD-S5505, GLD-S5509, GLD-S5225, GLD-S5220, GLD-S5115, GLD-S5106 (Available in “G” SKU)

To learn more visit: [www.flukenetworks.com/amenterprise](http://www.flukenetworks.com/amenterprise)



AirMagnet WiFi Analyzer PRO

AirMagnet Wi-Fi Analyzer PRO is the industry-standard mobile tool for auditing and troubleshooting enterprise wireless networks. AirMagnet Wi-Fi Analyzer PRO helps IT staff quickly solve end-user connectivity and performance issues while automatically detecting security threats, wireless network vulnerabilities and regulatory compliance status. The built-in analysis engine, AirWISE®, automatically provides instant answers on problem causes, symptoms, fixes and how to avoid future occurrences.

- Real-time accurate, independent and reliable analysis of 802.11a/b/g/n/ac WLANs
- Highly portable WLAN software tool that travels to the source of the WLAN problems enabling faster and accurate fault-finding
- Dedicated Wi-Fi troubleshooting solution guaranteeing any WLAN fault detection as compared to “time-slicing monitoring functionality” built inside the WLAN infrastructure
- Reduce IT costs, simplify workload and minimize user complaints by obtaining instant answers to ANY WLAN connectivity, performance, roaming, interference\*\* and security issues using the AirWISE intelligence engine
- Unique active toolset to isolate and troubleshoot Wi-Fi connectivity and performance issues
- Auditor-ready Wi-Fi Security compliance reporting for multiple verticals including wireless PCI compliance, SOX, ISO and many more
- Troubleshoot BYOD induced performance and wireless network security issues

Model	Version	Description	Gold 1YR	Gold 3YR
AM/A1150	10.7.1	Onsite analysis software for wireless network security, analysis and troubleshooting	GLD-S1150G	GLD-S1150-3Y-G

To learn more visit:  
[www.flukenetworks.com/enterprise-network/wireless-network/AirMagnet-WiFi-Analyzer](http://www.flukenetworks.com/enterprise-network/wireless-network/AirMagnet-WiFi-Analyzer)





lte

Network Time Machine for Service Providers

Network Time Machine for Service Providers is the first solution to provide back-in-time root cause analysis, down to the packet level, supporting 20Gbps LTE traffic on both portable and rackmount platforms. Its plug-and-play operation supports automatically identifying LTE subscribers from captured traffic; assessing each subscriber’s mobility and session management transactions, as well as identifying issues in the user-friendly UI.

- Industry 1st 20Gbps stream-to-disk portable and rackmount solution
- Fast plug-and-play deployment capturing all traffic for back-in-time identification of intermittent application and network issues in the LTE core
- LTE analysis for quick control-plane and user-plane visibility
- Multi-segment analysis reduces time to isolate performance impairments
- VoLTE performance analysis
- Innovative Performance Bottleneck Analysis (PBA) identifies problem within the server, network or subscriber domain
- Scalable multiple terabytes of storage

Model	Description	Gold 1YR
CSN/NTMC-PR4E	NTMC Premium4E, 10GBPS Capture Appliance	GLD-NTMC-PR4E
CSN/NTMC-PR4H	NTMC Premium4H, 20GBPS Capture Appliance	GLD-NTMC-PR4H
CSN/NTM-EA-UGD	NTM External Storage Array, 24TB RAID5	GLD-NTM-EA-UGD
CSN/NTM-EA-48VDC	NTM 24TB External Storage Appliance (48VDC & NBES Level 3)	GLD-NTM-EA-UGD
CSN/NTM-EA3-UGD	NTM external storage array, 36TB RAID5	GLD-NTM-EA3-UGD
CSN/NTM-EA3-48VDC	NTM 36TB External Storage Array (48VDC & NBES Level 3)	GLD-NTM-EA3-UGD
CSN/NTMC-P02B-AC	NTMC Portable2B, 1&10Gbps, 8TB, AC	GLD-NTMC-P02B
CSN/NTMC-P02B-DC	NTMC Portable2B, 1&10Gbps, 8TB, AC&DC	GLD-NTMC-P02B
CSN/NTMC-P02BS-AC	NTM Portable 2BS, SSD disk, 1&10Gbps, 7TB, AC	GLD-NTMC-P02BS
CSN/NTMC-P02BS-DC	NTMC Portable 2BS, SSD disk, 1&10Gbps, 7TB, AC&DC	GLD-NTMC-P02BS
CSN/NTMC-SW01	LTE decode option for NTMC	GLD-NTMC-SW01
CSN/NTMC-SW04	VoLTE analysis option for NTMC	GLD-NTMC-SW02
CSN/NTM-ATLAS	NTM ATLAS software module	N/A



Network Time Machine™

All-in-one packet capture appliance for network and application analysis. Visual fault domain isolation, advanced data mining and application-centric analysis reduce troubleshooting time. Single appliance with multiple terabytes of storage and plug-and-play operation cuts deployment and maintenance costs. Independently verified 100% packet capture at rates of up to 20Gbps.

- Capture traffic on multiple 10/100 Mbps, 1 Gbps and 10 Gbps Ethernet interfaces at rates in excess of 10Gbps (independently verified)
- Plug-and-play operation automatically identifies applications, collects, and displays relevant statistics in user-configurable dashboards
- Innovative Performance Bottleneck Analysis (PBA) visually identifies whether problems are in the server or the network
- Portable and rack mount versions with RAID options and multiple terabytes of storage

Model	Description	Gold 1YR	Gold 3YR
CSN/NTM-P02B-1A	CSN/NTM-P02B-10G PORTABLE2B 1GBPS 4TB W/ ATLAS	GLD-NTM-P02B-1GA	GLD3-NTM-P02B1GA
CSN/NTM-P01B	NTM PORTABLE 1B, 1GBPS	GLD-NTM-P01B	GLD3-NTM-P01B
CSN/NTM-P01B-A	NTM PORTABLE 1B, 1GBPS W/ATLAS	GLD-NTM-P01B-A	GLD3-NTM-P01B-A
CSN/NTM-P01B-C	NTM PORTABLE 1B, 1GBPS W0/HARDWARE FILTER	GLD-NTM-P01B-C	GLD3-NTM-P01B-C
CSN/NTM-P02B-10A	CSN/NTM-P02B-10G PORTABLE2B 10GBPS 4TB W/ ATLAS	GLD-NTMP02B-10A	GLD3-NTM-P02B10A
CSN/NTM-P02B-10PA	CSN/NTM-P02B-10G PORTABLE2B 1&10GBPS 8TB W/ ATLAS	GLD-NTMP02B-10PA	GLD3-NTM-P02B10PA
CSN/NTM-EX4A	NTM EXPRESS4, 1GBPS 4 PORTS 2TB WITH ATLAS	GLD-CSN/NTM-EX4A	GLD3-CSN/NTM-EX4A
CSN/NTM-ST4LA	NTM STANDARD4L W/1GBPS 8TB STORAGE & ATLAS	GLD-NTM-ST4LA	GLD3-NTM-ST4LA
CSN/NTM-ST4MA	NTM STANDARD4M W/1GBPS 12TB STORAGE & ATLAS	GLD-NTM-ST4MA	GLD3-NTM-ST4MA
CSN/NTM-ST4EA	NTM STANDARD4E CAPTURE APPLIANCE W/1GBPS & ATLAS	GLD-NTM-ST4EA	GLD3-NTM-ST4EA
CSN/NTM-PR4MA	NTM PREMIUM4M W/10GBPS 12TB STORAGE & ATLAS	GLD-NTM-PR4MA	GLD3-NTM-PR4MA
CSN/NTM-PR4EA	NTM PREMIUM4E CAPTURE APPLIANCE W/10GBPS & ATLAS	GLD-NTM-PR4EA	GLD3-NTM-PR4EA
CSN/NTM-PR4HA	NTM PREMIUM4H CAPTURE APPLIANCE W/10GBPS & ATLAS	GLD-NTM-PR4HA	GLD3-NTM-PR4HA

To learn more visit: [www.flukenetworks.com/ntm](http://www.flukenetworks.com/ntm)



ClearSight™ Analyzer

Application-centric analysis software that gives quick answers to application and network performance problems without the user having to look packets. ClearSight Analyzer (CSA) is a powerful network monitoring and application analysis solution. CSA provides deep network insight and visibility required for today’s complex and multi-protocol networks. With support of third-party decode engines, such as Wireshark, CSA can decode about 1,000 protocols.

- Application-centric analysis that automatically analyzes application flows with intuitive drill down to identify the root cause of performance issues
- Real-time application performance monitoring with alarms for problem identification
- Time-based analysis for trace files up to 4 Gigabytes to quickly identify relevant packets for the application-centric view

Model	Description	Gold 1YR	Gold 3YR
CSN/CSA-1000	ClearSight Analyzer Software	GLD-SW-1000	GLD-SW-1000-3YR
CSN/CSA-1000CD	ClearSight Analyzer Software on CD	GLD-SW-1000	GLD-SW-1000-3YR
CSN/CSA-1045	CSA W/IP Multicast/History Rprt/Packet Gen	GLD-SW-1045	N/A
CSN/CSA-1045CD	CSA W/IP Multicast/History Rprt/Packet Gen on CD	GLD-SW-1045	N/A
CSN/OPT-3045	IP Multicast Visualization, Hist Reporter, and Packet Gen for CSA	N/A	N/A



OptiView® XG Network Analysis Tablet

Dedicated tablet for automated network and application analysis—the fastest way to see root cause.

Tablet with dedicated custom hardware for automated network and application analysis in the deployment and troubleshooting of new technologies. Unique features including proactive analysis, path analysis, and application-centric analysis get to root cause faster than ever before.



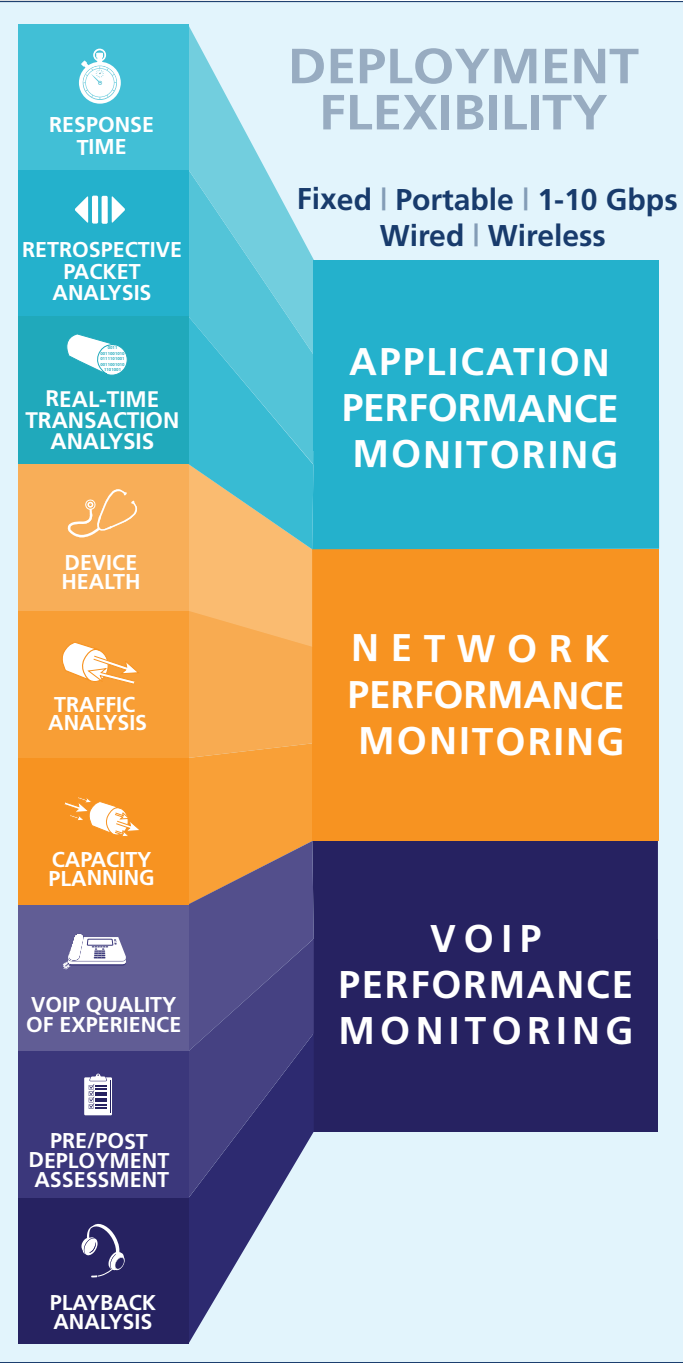
- Tablet form factor with powerful consolidated functionalities providing automated analysis for 10/100 Mbps, 1/10 Gbps and 802.11a/b/g/n wireless LANs
- Intuitive user interface with smart navigation and built-in intelligent guided problem solving plus user customizable dashboards providing the flexibility to view data as needed
- Application-centric analysis proving a high level view of the health of the applications on the network with the capability to analyze the performance of the network infrastructure underlying business critical applications (path analysis) to ensure consistent end-user experience
- Guided troubleshooting with automated diagnostics and granular data to solve problems before they escalate
- Detailed, fast network discovery for instant visibility of what's out there and where it's connected in minutes

Model	Description	Gold 1YR	Gold 3YR
OPVXG	*OptiView XG—Network Analysis Tablet, 1 Gbps	GLD-OPVXG	GLD3-OPVXG
OPVXG-10G	*OptiView XG—Network Analysis Tablet, 10 Gbps	GLD-OPVXG-10G	GLD3-OPVXG-10G
OPVXG-10G/GLD	*OptiView XG—Network Analysis Tablet, 10 Gbps with 1-Year of Gold Support (available in U.S. only)	Included in Bundle	N/A
OPVXG-PRO	*OptiView XG—Network Analysis Tablet, 1 Gbps, with AirMagnet WiFi Analyzer and Spectrum XT	GLD-OPVXG-PRO	GLD3-OPVXG-PRO
OPVXG-PRO/GLD	*OptiView XG—Network Analysis Tablet, 1 Gbps, with AirMagnet WiFi Analyzer and Spectrum XT with 1-Year of Gold Support (available in U.S. only)	Included in Bundle	N/A
OPVXG-EXPT	*OptiView XG—Network Analysis Tablet, 10 Gbps with AirMagnet WiFi Analyzer and Spectrum XT	GLD-OPVXG-EXPT	GLD3-OPVXG-EXPT
OPVXG-EXPT/GLD	*OptiView XG—Network Analysis Tablet, 10 Gbps with AirMagnet WiFi Analyzer and Spectrum XT with 1-Year of Gold Support (available in U.S. only)	Included in Bundle	N/A
OPVXG-LAN	OptiView XG—Network Analysis Tablet, 1 Gbps, wired only	GLD-OPVXG-LAN	GLD3-OPVXG-LAN

\*For sale only in countries where the XG wireless is certified

To learn more visit: [www.flukenetworks.com/xg](http://www.flukenetworks.com/xg)

# FLUKE NETWORKS Takes End-To-End AANPM to New Level



Application Aware Network Performance Management (AANPM) is an emerging method of monitoring, troubleshooting, and analyzing both network and application systems.

Fluke Networks delivers a unified AANPM solution, bringing together and integrating Visual TruView™ and OptiView XG for fully centralized AANPM visibility plus detailed local visibility.

To learn more:  
[www.flukenetworks.com/aanpm](http://www.flukenetworks.com/aanpm)







Tap Solutions

Fluke Networks now offers VSS Monitoring network packet brokers (NPB) as an option when purchasing our network monitoring and troubleshooting solutions. VSS Monitoring is the leader in network packet brokers, allowing you to make optimal use of your network monitoring and security tools. VSS provides a highly scalable, systems-based approach to packet brokering. With the unique vMesh architecture, up to VSS 256 appliances can be interconnected to form a fully-redundant, self-healing, and scalable packet brokering fabric, providing complete network visibility and data access, and greater tool efficiency and ROI.

VSS NPB improves visibility, efficiency and ROI of network intelligence tools. Deployed globally by 80% of the world’s tier 1 service providers, 1,000+ large corporations and major government agencies, the VSS NPB allows hundreds of meshed packet brokers to optimize tools as a single, fault-tolerant system. This system-based approach gives organizations these advantages:

- **Visibility:** Bring more complete link-level visibility to broader tool categories
- **Scalability:** Keep up with network bandwidth growth more easily and cost-effectively
- **Simplicity:** Manage NPB devices more easily, as a single system, with backward and forward compatibility
- **For Service Providers:** Improve operational efficiency. Empower service assurance and monitoring infrastructure for 4G/LTE and fixed network services.
- **For Enterprise:** Maximize your tools’ ROI. Optimize the performance and longevity of your network monitoring and security systems.

Model	Description
TAP Series	Highly resilient access from full-duplex networks, making traffic available for network monitoring and security tools
vBroker™ Series	High capacity packet brokers that provide network-wide visibility, data access and optimization for network monitoring and security tools. Support up to 100Gbps
Distributed Series	Mid-range packet brokers that provide cost-effective and scalable network-wide visibility and data access for network monitoring and security tools

To learn more visit: [www.flukenetworks.com/vss](http://www.flukenetworks.com/vss)



Telephone Butt-in Test Sets

Complete line of analog butt-in telephone test sets provides the view you need to ensure telecommunications services

Fluke Networks offers the most comprehensive line of telephone test sets to meet the voice and data demands of telecommunications technicians. Our DropSafe™ reliability and RainSafe™ protection ensure maximum ruggedness, even in the most extreme conditions. Our DataSafe™ technology is vital in preventing interruption of existing data traffic, and our DSL/POTS filtering technology goes one step further to allow testing on the POTS side of a line even while data is present.

We continually improve our line of butt-in test sets to ensure technicians have the right features to match their application needs – with the most flexible options for every budget.

Telephone Test Set Comparison

- TS°52 PRO LCD Test Set
- TS°54 TDR Test Set
- TS°30 Test Set
- TS°22 Series Test Sets
- TS°25D LCD Test Set
- TS°19 Test Set
- Modular Adapters
- Line Cords and Clips

- 54
- 55
- 55
- 56
- 56
- 57
- 57
- 58
- 59



TELEPHONE  
TEST SET  
COMPARISON



	TS®54 TDR	TS®52 PRO	TS®22A	TS®22	TS®25D	TS®30 / TS®120*	TS®19
Display—back lit LCD and glow-in-the-dark keypad	✓	✓			LCD only		
Extended range high-impedance DataSafe operation in monitor mode	✓	✓			✓		
High-impedance DataSafe operation in monitor mode	✓	✓	✓		✓	✓	✓
Data lockout protection	✓	✓			✓		
Data lockout override	✓	✓			✓		
DSL/POTS filtering technology	✓	✓			✓		
Low/high voltage indication	✓	✓			✓		
Low current (mA) indication		✓			✓		
Over voltage protection	✓	✓	✓	✓	✓	✓	
Over current protection	✓	✓	✓	✓	✓	✓	
Two-way speakerphone for true hands-free conversations	✓	✓	✓				
One-way amplified speaker for hands-free monitoring	✓	✓	✓	✓	✓		
Audible ringer for callbacks	✓	✓	✓	✓	✓	✓	✓
Waterproof—exceeds American Military Spec. MIL-STD-810E	✓	✓					
RainSafe—safe in severe weather conditions	✓	✓	✓	✓		✓	
DropSafe—passes 20 foot (6 meter) drop test onto concrete	✓	✓	✓	✓		✓	
Meets Bellcore specifications	✓	✓	✓	✓		✓	
Tone and pulse operation	✓	✓	✓	✓	✓	✓	✓
Polarity indication in talk mode	✓	✓	✓	✓	✓	✓	✓
PBX pause button	✓	✓	✓	✓	✓		
Stores nine 18-digit numbers in repertory dialer (speed dialing)	✓	✓	✓	✓	✓		
Replaceable 9V battery for powering speaker	✓	✓	✓	✓	✓		

\*TS120 for outside North America only. 67/33 break/make ratio.



TS®52 PRO LCD Test Set

The TS52 PRO Test Set features the latest in test set technology. Designed with a superior, radiant liquid crystal display (LCD) user interface, it allows you to see what cannot be heard in any outside plant environment. The back-lit LCD and glow-in-the-dark keypad brings light to even the darkest of work environments, providing perfect line diagnostic clarity. The TS52 PRO Test Set is also equipped with 2-way speakerphone and DataSafe™ Pro data protection technology featuring superior high-impedance monitoring, data lockout and lockout override, making you completely safe.

- **Display**—back-lit LCD and glow-in-the-dark keypad
- **DataSafe Pro**—superior high-impedance monitoring, lockout and override, making you completely safe in any mode
- **DropSafe/RainSafe™**—passes 20-foot drop test and designed for use in rainy conditions
- **DSL/POTS filtering technology**—allows technicians to clip on a live DSL line to test POTS service without downing or disrupting data service
- **Two-way, hands-free speakerphone**—for true hands-free conversation
- **Test Functions:**
  - Data indication: warns when data is present.
  - Voltage indication: troubleshooting feature to identify potential line problems
  - Current (mA) indication: verifies sufficient line current
  - Caller-ID: verifies service is functional
  - DTMF digit grabbing: isolate faulty customer premise equipment



Model	Description
52801001	TS52 PRO test set with piercing pin clips
52801004	TS52 PRO test set with 346A plug
52801009	TS52 PRO test set with ABN/PP clips
52801RJ9	TS52 PRO test set with ABN/PP and RJ-11 plug

To learn more visit: [www.flukenetworks.com/ts52](http://www.flukenetworks.com/ts52)

TS®54 TDR Test Set

A three-in-one—TDR, toner and pair identifier—premium, VDV test set

Ten testing functions include:

- **TDR**—find cable length measurement and locate faults on virtually all types of cable including twisted pair, coaxial, and parallel conductors
- **Toner**—five separate tones for fast and easy differentiation between multiple wire pairs
- **SmartTone®**—short the correct pair and tone changes for exact pair identification
- **Data indication**—warns when data is present on the line
- **Voltage indication/measurement**—identifies potential line problems
- **Current (mA) indication/measurement**—verifies sufficient line current
- **Caller-ID with Call Waiting CID**—verifies functional service
- **DTMF Digit Grabbing**—isolates faulty customer premise equipment
- **Detects dial tone, places and receives calls**
- **Polarity**







TS30 Test Set

The TS30 test set features the latest in test set case design, at an affordable price. The ergonomic non-slip grip handle provides improved handling of the set in all weather conditions. Includes DataSafe™ operation so technicians can clip onto a line in monitor mode, without disrupting existing data traffic.

- High impedance DataSafe operation in monitor mode
- DropSafe™ reliability passes 20-foot drop test
- RainSafe™ protection in severe weather conditions
- Mute switch
- Last number redial

Model	Description
30800009	TS30 test set with ABN
30800001	TS30 test set with piercing pin clips

To learn more visit: [www.flukenetworks.com/ts30](http://www.flukenetworks.com/ts30)



TS22 Series Test Sets

The TS22 Series offers a unique built-in, one-way amplified speaker that provides three audio levels for hands-free listening and use with automated voice response systems. Multiple memories enable storage of nine 18-digit telephone numbers in repertory dialer (speed dialing) for easy access to test boards, the central office and other frequently called numbers. The last number redial feature eliminates the need to re-key your last entry. The TS22 test set offers an unbeatable combination of reliability, durability and expanded utility.

- TS22 test set has an amplified speaker for hands-free monitoring
- TS22A test set has a two-way speakerphone for true hands-free conversation
- DropSafe™ reliability passes 20-foot drop test
- RainSafe™ protection in severe weather conditions
- Stores nine 18-digit numbers in repertory dialer (speed dialing)

Model	Description
22801009	TS22A test set with ABN
22801007	TS22A test set with ground start cord
22801004	TS22A test set with 346A plug
22801001	TS22A test set with piercing pin clips
22800009	TS22 test set with ABN
22800007	TS22 test set with ground start cord
22800004	TS22 test set with 346A plug
22800001	TS22 test set with piercing pin clips

To learn more visit: [www.flukenetworks.com/ts22](http://www.flukenetworks.com/ts22)



TS25D LCD Test Set

The TS25D test set features data lockout and lockout override, making you completely safe in talk or monitor mode. The DSL/POTS filtering technology allows you to safely draw dial tone without downing DSL. A built-in analog tone generator simplifies wire identification with a probe. An amplified speaker makes monitoring the line hands-free, so you can keep working. The Talk Battery function provides voltage to carry voice conversation on non-powered pairs. Also includes Caller-ID and Call-waiting Caller-ID functions. All in a compact unit with an oversized, robust liquid crystal display (LCD) that makes the intuitive, common-sense menus easy-to-read and use.

- Caller-ID and Call-waiting Caller-ID
- Amplified speakers for hands-free monitoring
- Data lockout and data lockout override
- Tone generator for wire identification
- Talk battery to power voice conversation on dry (non-powered) lines



Model	Description
25501109	TS25D test set with ABN kit (includes pouch and earpiece)
25501009	TS25D test set with ABN
25501004	TS25D test set with 346A plug
25500400	TS25D pouch only
25500300	TS25D battery door with belt clip

To learn more visit: [www.flukenetworks.com/ts25d](http://www.flukenetworks.com/ts25d)



TS19 Test Set

The TS19 test set combines all the essential test set features at an affordable price. This test set was specifically designed for in-house telecom technicians. Its high impedance monitor prevents accidental disruption of service from clipping onto a data line while in Monitor Mode, thus ensuring the integrity of critical data lines. Features such as tone (DTMF) or pulse operation, talk/monitor capabilities, polarity test button and last number redial make this test set the perfect combination of features and price.

- High impedance DataSafe operation in monitor mode
- Tone (DTMF) and pulse operation and last number redial
- Polarity indication in talk mode

Model	Description
19800009	TS19 test set with ABN
19800003	TS19 test set with banana jacks to alligator clips

To learn more visit: [www.flukenetworks.com/ts19](http://www.flukenetworks.com/ts19)



**In-line Modular Adapter (4, 6, and 8-wire)**

In-line banjo modular adapters permit testing on working lines without disrupting service. Quickly determine whether the trouble is in the phone or in the line.

- Easily complete testing and obtain circuit access on working lines without disrupting service
- Clear circuit markings on the sides and bottom of the unit
- Test line status with the 4-wire modular adapter

**4-wire Standard Modular Adapter**

Provide a quick connect to modular telephone jacks using any standard butt-in test set equipped with spring clips.

- Easily complete testing and obtain circuit access on working lines without disrupting service
- Clear circuit markings on the sides and bottom of the unit
- Test line status with the 4-wire modular adapter

**Spare Modular Adapter Cords (standard and K-plugs)**

In-line banjo modular adapters feature replaceable adapter cords which enable broken jack clips to be replaced without discarding the entire unit. K-plug versions have rugged jack clips.

Model	Description
10113000	4-wire modular adapter
10210100	4-wire in-line modular adapter
10210101	4-wire in-line modular adapter with K-plug
10220100	6-wire in-line modular adapter
10220101	6-wire in-line modular adapter with K-plug
10230100	8-wire in-line modular adapter
10230101	8-wire in-line modular adapter with K-plug

To learn more visit: [www.flukenetworks.com/modular](http://www.flukenetworks.com/modular)



**Line Cords and Clips**

P4480009	P4480001	P4480004	P4480RJ9	P3218024	P3218028
Line cord with Angled Bed-of-Nails Clips	Line cord with Angled Piercing Pin Clips	Line cord with 346A plug (Central Office)	Line cord with Bed-of-Nails and RJ-11 plug	Line cord with Straight Bed-of-Nails Clips	Line cord with Angled Piercing Pin Clips
Compatible with 52 and 40 Series	Compatible with 52 and 40 Series	Compatible with 52 and 40 Series	Compatible with 52 and 40 Series	Compatible with 20 Series	Compatible with 20 Series
P3218234	P3080009	P1980001	P1980003	P1980007	P1980009
Line cord with Angled Bed-of-Nails Clips	Line cord with Angled Bed-of-Nails Clips	Line cord with Angled Piercing Pin Clips	Line cord with Banana Jacks and Alligator Clips	Line cord with Ground Start cord	Line cord with Angled Bed-of-Nails Clips
Compatible with 20 Series	Compatible with 30 Series	Compatible with 19 Series	Compatible with 19 Series	Compatible with 19 Series	Compatible with 19 Series
P3218RJ9	P3218442	P2280062	P3218202	P4080248	P4080249
Line cord with Angled Bed-of-Nails Clips and RJ-11 plug	Line cord 471A Plug with Angled Piercing Pin Clips	Ground start cord	Angled Bed-of-Nails, Pkg. 1 each	Standard locking belt clip	Belt clip
Compatible with the TS20 Series	Compatible with all, requires 346A Plug	Component for P1980007	Compatible with all	Compatible with 52 and 40 series	Compatible with 52 and 40 series

**Line cord boot only**

P3218-418 Black Boots (Pkg. 10)  
P3218-420 Red Boots (Pkg. 10)





# Access Network Test Equipment

## Complete line of access network test sets for the successful installation and troubleshooting of carrier Ethernet, xDSL and special services

Effective installation and maintenance solutions are essential to keep customers happy and technicians productive. Award-winning field test products earned their reputation where it matters most: on the job.

We offer test and troubleshooting solutions that address a wide range of technologies and applications, from POTS to carrier Ethernet, xDSL to IP, and more. Whether it's validating service level agreements (SLAs) for carrier-class Ethernet services, qualifying and deploying ADSL2/2+ or VDSL services, isolating cable faults, eliminating noise problems, or stress testing circuits prior to service installation, Fluke Networks powerful tools help technicians get to the solution fast.

- CopperPro™ Series II Broadband Loop Tester
- 990DSL CopperPro™ Loop Tester
- CopperPro Terminator™ Far End Terminating Device
- 635 QuickBERT-T1 Test Set
- Voltage Detector

- 61
- 62
- 62
- 63
- 63



## CopperPro™ Series II Broadband Loop Tester

The CopperPro Series II is the complete test set for qualifying your local loop for ADSL, ADSL2/2+, VDSL and special services. It packs all the test, analysis and troubleshooting capabilities an OSP technician needs into one integrated, handheld tool. New features include broadband noise identification for VDSL, advanced TDR capabilities for locating short bridge taps and other VDSL-affecting impairments. Rugged construction and easy-to-use features give your technicians the ability build, repair, install, and maintain OSP systems more efficiently with fewer repeats.

- Quickly qualify the facilities for DSL services including ADSL, VDSL, HDSL, T1 and other special services
- Easily identify and locate possible problems to ensure reliable performance
- Install new services efficiently with fewer call-backs
- Verify connectivity and network performance to ensure that next-generation services perform up to your customers' expectations

Model	Description
990DSL2+	CopperPro Next Gen Copper Loop Analyzer w/TDR and wideband spectral analysis for ADSL2+
990VDSL	CopperPro Next Gen Copper Loop Analyzer w/TDR and wideband spectral analysis for VDSL
990TL-SB/RF	RF Test lead set for 990DSL2+ or 990VDSL with spike+bed-of-nails piercing clips
990LT	990LT CopperPro Test Set—Next-generation loop analyzer (basic)
990LT/TDR	TDR option for the 990LT CopperPro Test Set
990LT/DSL	DSL option (2.2 MHz) for the 990LT CopperPro Test Set
990LT/VDSL	VDSL option (17.7 MHz) for the 990LT CopperPro Test Set with DSL option installed

To learn more visit: [www.flukenetworks.com/copperpro](http://www.flukenetworks.com/copperpro)







990DSL CopperPro™ Loop Tester

The CopperPro loop tester offers a broad range of Plain Old Telephone Services (POTS) troubleshooting, fault location and line qualification capabilities in an affordable package. Its Wideband/TDR option adds high-frequency transmission testing and qualification functions for services like ADSL, HDSL and HDSL2, ISDN, T1, E1 and DDS. And the TDR option adds precise fault location and analysis. CopperPro is packed with test, analysis and troubleshooting capabilities integrated with an easy-to-use toolbox interface that makes identifying and locating faults as simple as pushing a button.

- Replaces up to 12 traditional test sets
- Troubleshoots and qualifies lines for POTS, ADSL and other special services
- Time Domain Reflectometer (TDR) feature allows precision fault locations

Model	Description	Gold 1YR
990 DSL	CopperPro Loop tester	GLD-990DSL
990DSLWT	Loop tester with wideband and TDR	N/A
990TL-SB	Test lead set (Spike and bed-of-nails)	N/A
990-CASE	Deluxe transport bag	N/A

To learn more visit: [www.flukenetworks.com/990](http://www.flukenetworks.com/990)



CopperPro Terminator™ Far End Terminating Device

The CopperPro family of loop testers packs a full complement of test and troubleshooting capabilities into one rugged, integrated tool for OSP technicians. You can expand those capabilities even further with Terminator—an accessory module to the 990DSL CopperPro that lets you perform terminated transmission testing quickly, easily, single-handedly. Together, the CopperPro and Terminator are a major advance in qualifying and troubleshooting copper access network circuits, including HDSL2/4. Nothing else on the market offers a more complete and effective solution for reducing failure frequency, repeats, and chronic problems with special services circuits.

- Perform terminated transmission testing quickly, easily, single-handedly
- Optimize your workforce with “one tech out” terminated testing of out-of-service pairs
- High-speed acceptance/qualification tests, including loop attenuation—a must for HDSL2/4
- Robust error checking eliminates time-consuming false starts and assures reliable communication with the 990DSL CopperPro test set
- Sweep thousands of frequencies in seconds

Model	Description
TN2100	Enhanced Terminator far end device
TN-LEADS-B	Test lead set, bed-of-nail clip

To learn more visit: [www.flukenetworks.com/terminator](http://www.flukenetworks.com/terminator)



635 QuickBERT-T1 Test Set

Compact, handheld T1 test set for construction, installation and troubleshooting applications. Instantaneous detection and display of framing, line coding, errors, alarms, level, frequency and more. In a single 4 lb (1.8 kg) package, the 635 includes all the basic T1 testing capabilities you would expect in a larger and more expensive tester. It performs bit-error tests, detects framing type, line coding and bit pattern, and displays signal level, frequency, clock slips, errors and alarms. The 635 transmits the most commonly used loop codes, including HDSL. Full, unframed and fractional (56k and 64k) T1 are supported, along with display of signaling and data bits and capture of DTMF digits. Plus, individual voice channels may be monitored on the built-in speaker or over a headset.

- Instantaneous detection and display of framing, line coding, errors, alarms, level, frequency and more
- Transmits and receives common Bit Error Rate Test (BERT) patterns and includes all common loop codes
- Compact, rugged and easy-to-use

Model	Description
635	QuickBERT-T1, carrying case, ToolPak™ hanging accessory, and necessary cables and adapters
633/635-Kit	2 Bantam-to-310 cables, 2 Bantam-to-alligator clip cables, 1 Bantam-to-RJ-48 cable
635-1	635 QuickBERT-T1 and cable kit

To learn more visit: [www.flukenetworks.com/quickbert](http://www.flukenetworks.com/quickbert)



Voltage Detector

In just a few seconds, a technician can determine if it’s safe to work around areas such as transformer cases and circuit breaker housings, power ground wires or newly-driven ground rods, mobile homes, metallic siding or metal framing, pedestals, cross boxes or conduit, street light fixtures or electrical machinery. The Voltage Detector is a proven life-saver, with more than 30 years of service in telecommunications outside plant and power utility applications.

- Helps protect against accidental electrocution
- Is fast and easy-to-use. Handy as a flashlight
- Rated to 20,000 Vac and 2,000 Vdc

Model	Description
C9970	Voltage Detector
C9973	Voltage Detector kit—including Voltage Detector, probe cap, storage bag, temporary bond, ground cord and handbook
C9974	Voltage Detector kit with test plug

To learn more visit: [www.flukenetworks.com/voltagedetector](http://www.flukenetworks.com/voltagedetector)



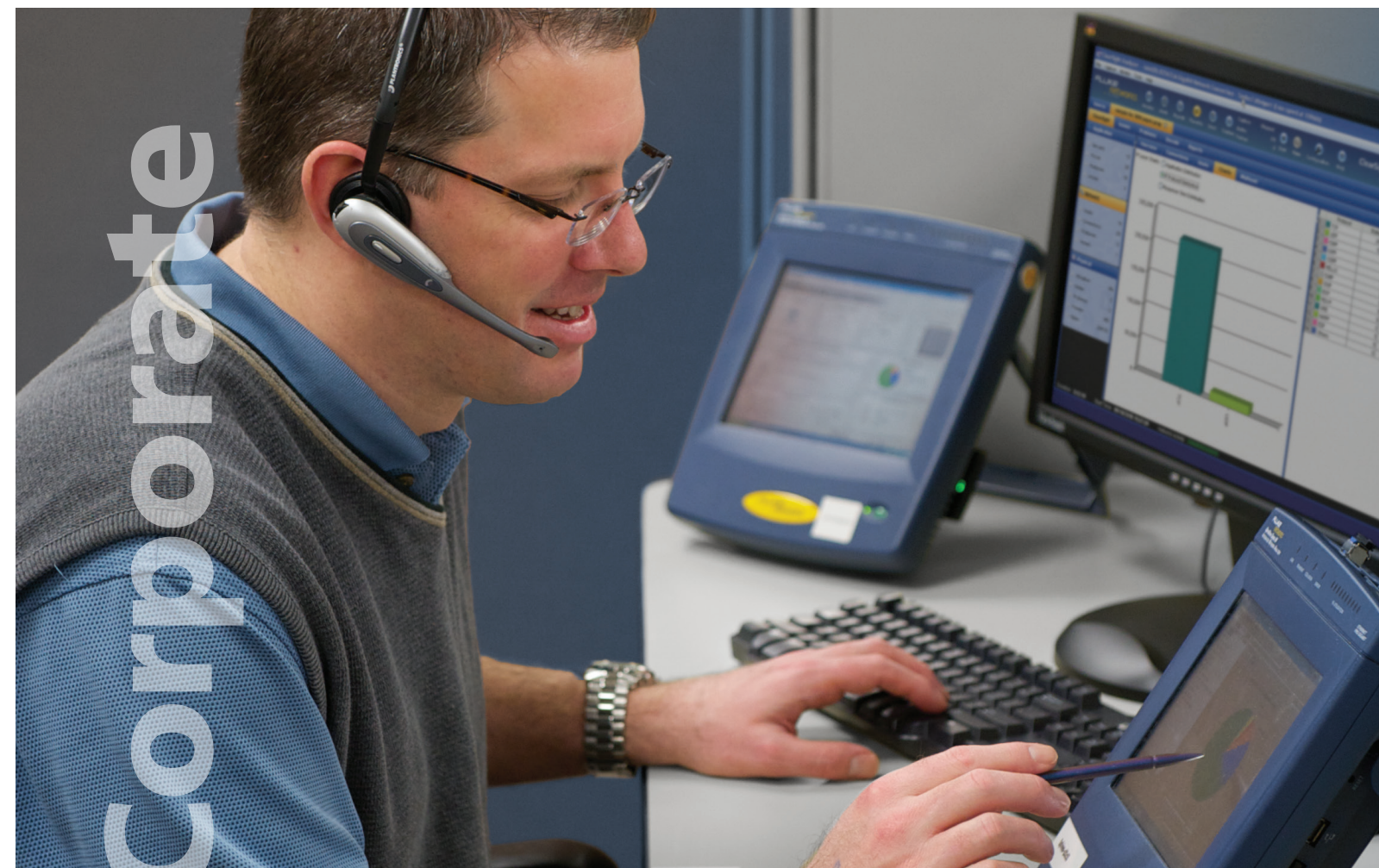
# LinkWare™ Live Test Results Management Service



Simplify the data collection and reporting process and access graphical project status that is easy to understand and can be reviewed anywhere.

- Real time visibility into project status from any location
- Instant access to results for faster troubleshooting
- Less rework by reducing the likelihood of losing test results when testers or memory cards are lost, stolen or erased
- Reduce time by automatically consolidating all results into the correct job
- Increased productivity by no longer needing to recall testers from the field just to download test results

For more information, visit [www.linkwarelive.com](http://www.linkwarelive.com). To sign-up now and enter to win a Versiv, visit <http://www.flukenetworks.com/content/try-linkware-live-and-enter-win>



## Gold Support

Protect your investment and minimize business downtime with Gold Membership

What's included with Gold Membership?

Gold Membership Privileges

What's new from Fluke Networks

66
66
67
21



Buy Gold. Make your investment count.

Protect your investment and minimize business downtime with Gold Membership

Gold Membership is much more than just a repair warranty. It is a comprehensive maintenance and support program that offers expanded coverage for Fluke Networks’ products and accessories. It provides a premium level of support to minimize business down-time and ensure a high return on your investment.

3-Year Gold Membership provides a 10% discount off current Gold pricing along with 3-year price protection. On average customers can save up to 19% over 3-years by taking advantage of the 3-year Gold Membership option. Gold Membership is available for most Fluke Networks products in 1-year or 3-year (save 10% with 3-year) contracts.



What’s included with Gold Membership?

Benefits	Gold Membership	Non-Gold Member
Live technical support with exclusive phone numbers	✓	
FREE Repair with “first on bench” turnaround service	✓	
Loaner Equipment Service*	✓	
FREE Accessory Replacements**	✓	
Free Annual Calibration***	✓	
Lifetime Buyback Guarantee	✓	
Member Only Promotions	✓	
Access to technical support	Web, Email and Phone	Web and Email
Response time from Technical Support	<2 Hours	<24 Hours
Customer Support—Phone and Email	24x7x365	7am-5pm (Pacific Time)
Primary Case Handling	Technical Support Engineer	Customer Service Agent

\*Available in certain geographies  
\*\*Applies to accessories included in the original product bundle  
\*\*\*Calibration applicable to DSX, DTX, Optifiber and Certifiber products



Gold Membership Privileges

Technical support

Unlimited 24/7 technical expertise with local language support. Gold members are provided with direct members-only priority phone numbers to our world-class Technical Assistance Centers (TAC).

Repair

Unlimited, no-hassle, no-charge PRIORITY repair services including labor, parts and shipping.

Loaner unit

A loaner unit or replacement unit can be provided during repair, available the next business day for ZERO downtime.

Accessories

Free replacement of any failed accessory that was included in the box with the main unit at the time of delivery.

Calibration

One annual precision calibration and factory refresh per annual contract period. In addition, all accessories are inspected and replaced if faulty.

Upgrades/Updates

Valuable software and firmware upgrades for your unit during the year giving you the latest functionality, improving technical efficiency and troubleshooting.

Lifetime BuyBack Guarantee

Get cash back when you decide to upgrade to a new tester—100% within 30 days, 60% within 1 year, and 15% after a year for the life of your tester. More information at [www.flukenetworks.com/GoldBuyBack](http://www.flukenetworks.com/GoldBuyBack).

Discounts & Members-Only Promotions

Special discounts are offered to Gold customers on new products, enhancements and used demo equipment.

Easy Access to Gold Entitlements

Upon purchase, your company will receive a unique Gold Membership Number and PIN for secure access to your online Gold account.

To see a list of supported countries and full terms and conditions, go to [www.flukenetworks.com/gold](http://www.flukenetworks.com/gold).

Contact your local Fluke Networks representative and order your Gold Membership today!





## What's new from Fluke Networks

### Versiv™

Faster systems acceptance for all copper and fiber certification jobs.



More on page 5



More on page 20



More on page 21



More on page 28



### LinkSprinter™

- Test results sent to the LinkSprinter Cloud Service
- Test details delivered to your phone or tablet browser
- Use the cloud service to store, manage, annotate and email test reports
- Color-graded LEDs identify problem domain to PoE, Link, DHCP, Gateway and Cloud connectivity

More on page 42



### AirMagnet 802.11ac Design & Troubleshooting Tools®

- Estimate budgets and define 802.11ac migration strategies with AirMagnet Planner
- Accurate deployment based on real-world 802.11ac user experience with AirMagnet Survey PRO
- Full 3 X 3 802.11ac analysis and troubleshooting with AirMagnet WiFi Analyzer PRO

More on page 45

## Contact Us

### Corporate

Fluke Networks  
6920 Seaway Boulevard  
Everett WA 98203, USA

### Customer Service, Technical Support and Training

United States and Canada:  
**1-800-283-5853** (Toll free inside U.S. and Canada)  
**1-425-446-4519** (Worldwide)

Customer Service Email: [info@flukenetworks.com](mailto:info@flukenetworks.com)  
Support Email: [support@flukenetworks.com](mailto:support@flukenetworks.com)  
Training Email: [training@flukenetworks.com](mailto:training@flukenetworks.com)

[www.flukenetworks.com](http://www.flukenetworks.com)



[www.flukenetworks.com/facebook](http://www.flukenetworks.com/facebook)



[www.flukenetworks.com/twitter](http://www.flukenetworks.com/twitter)



[www.flukenetworks.com/linkedin](http://www.flukenetworks.com/linkedin)



[www.flukenetworks.com/youtube](http://www.flukenetworks.com/youtube)

Fluke Networks  
P.O. Box 777, Everett, WA USA 98206-0777

Fluke Networks operates in more than 50 countries worldwide. To find your local office contact details, go to [www.flukenetworks.com/contact](http://www.flukenetworks.com/contact).

©2014 Fluke Corporation.  
Printed in U.S.A. 10/2014 3158212F