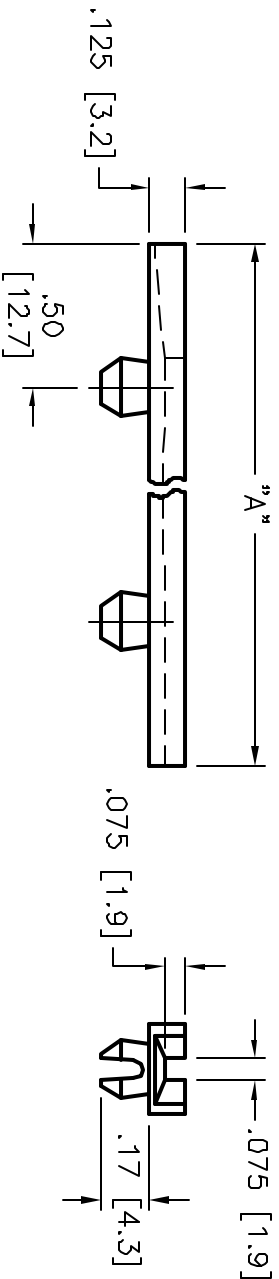
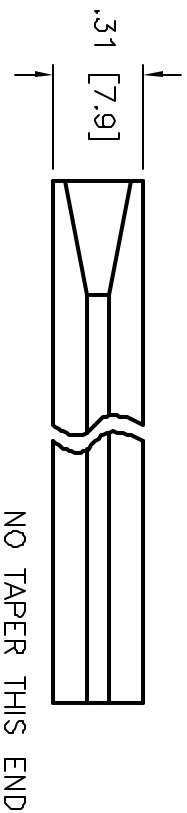


ALL RIGHTS RESERVED. NO PORTION OF THIS PUBLICATION, WHETHER IN WHOLE OR IN PART, CAN BE REPRODUCED WITHOUT THE EXPRESS WRITTEN CONSENT OF SPC TECHNOLOGY.

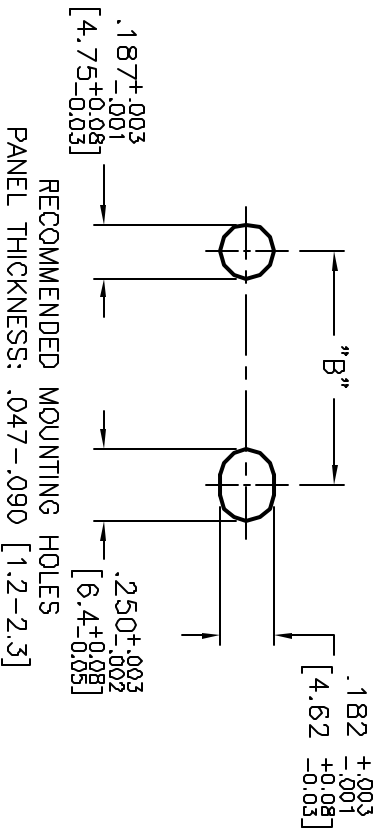
SPC-F003.DWG

REVISIONS		DOC. NO. SPC-F003	Effective 7/8/02	DCP No. 1308				
DCP #	REV	DESCRIPTION	DRAWN	DATE	CHECK'D	DATE	APPR'D	DATE
1865	A	RELEASED	JWM	5/13/03	JN	07/17/08	JN	07/17/08



SPC Type No.	"A" Ref.	"B" ±1/64 [±0.4]
SPC23710	2.5 [63.5]	1.5 [38.1]
SPC23717	5.0 [127.0]	4.0 [101.6]
SPC23718	6.5 [164.1]	5.02 [127.5]
SPC23719	7.0 [177.8]	6.0 [152.4]

NOTES:
 - Material: Nylon 6/6
 - Color: Natural



TOLERANCES:

DISCLAIMER:
 ALL STATEMENTS AND TECHNICAL INFORMATION CONTAINED HEREIN ARE BASED UPON INFORMATION AND/OR TESTS WE BELIEVE TO BE ACCURATE AND RELIABLE. SINCE CONDITIONS OF USE ARE BEYOND OUR CONTROL, THE USER SHALL DETERMINE THE SUITABILITY OF THE PRODUCT FOR THE INTENDED USE AND ASSUME ALL RISK AND LIABILITY WHATSOEVER IN CONNECTION THEREWITH.

Tolerances: Unless Otherwise Specified:
 XX = ±.010
 .XXX = ±.005
 Fractional = ±1/64
 Angles = ±1°

DRAWN BY:	DATE:
Jeff McVicker	5/13/03
CHECKED BY:	DATE:
Jason Nash	07/17/08
APPROVED BY:	DATE:
Jason Nash	07/17/08

DRAWING TITLE:		SCALE:	
Snap-In Card Guides		NTS	
SIZE	DWG. NO.	ELECTRONIC FILE	REV
A	TA-887	TA-887.dwg	A
SHEET: 1		OF 1	