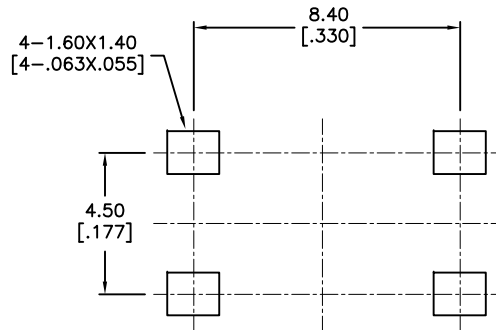
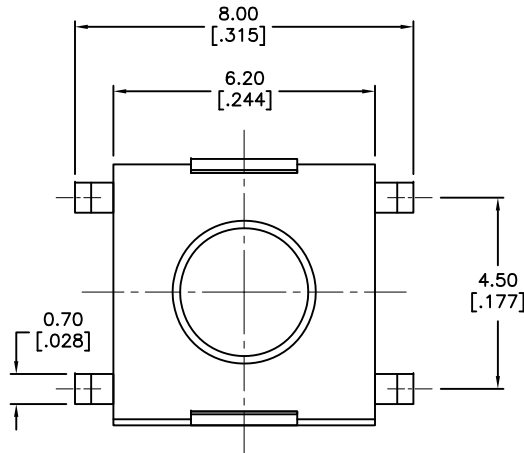
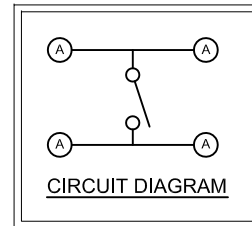
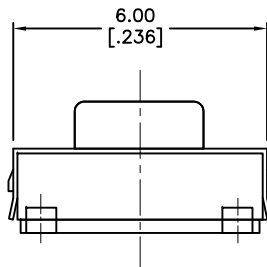
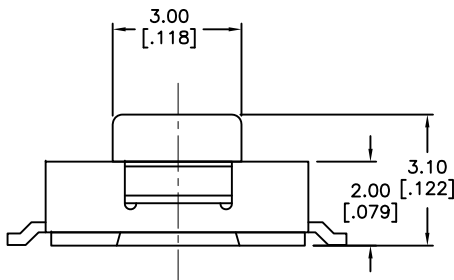


REVISIONS

| DCP # | REV | DESCRIPTION | DRAWN | DATE     | CHECKD | DATE     | APPRVD | DATE     |
|-------|-----|-------------|-------|----------|--------|----------|--------|----------|
| 2032  | A   | Released    | JN    | 07/07/09 | JWM    | 07/07/09 | JWM    | 07/07/09 |



P.C.B. LAYOUT



**SPECIFICATION**



**MECHANICAL**

- Operation Force: See Table
- Stop Strength: Max.3kgf vertical static load continuously for 15 seconds
- Stroke: (6x6) 0.25+0.2mm / -0.1
- Operation Temperature: -25°C to + 70°C
- Storage Temperature: -30°C to +80°C

**ELECTRICAL**

- Electrical Life: 200,000 cycles min.
- Rating: 50mA , 12VDC
- Contact Resistance: 100mΩmax.
- Insulation Resistance: 100MΩmin. at 500VDC
- Dielectric Strength: 250VAC / 1 minute
- Contact Arrangement: 1 pole 1 throw

**MATERIALS**

- COVER: Steel
- BASE: LCP (Liquid Crystal Polymer)  
Color: Black
- STEM: LCP (Liquid Crystal Polymer)  
Color: Black (100gf), Brown (160gf)
- CONTACT DISC: Phosphor bronze with silver cladding.
- TERMINAL: Brass with silver plated.

| Mfg. P/N | Operating Force | Color of Stem |
|----------|-----------------|---------------|
| MC32882  | 100gf           | Black         |
| MC32884  | 160gf           | Brown         |

DISCLAIMER:  
ALL STATEMENTS AND TECHNICAL INFORMATION CONTAINED HEREIN ARE BASED UPON INFORMATION AND/OR TESTS WE BELIEVE TO BE ACCURATE AND RELIABLE. SINCE CONDITIONS OF USE ARE BEYOND OUR CONTROL, THE USER SHALL DETERMINE THE SUITABILITY OF THE PRODUCT FOR THE INTENDED USE AND ASSUME ALL RISK AND LIABILITY WHATSOEVER IN CONNECTION THEREWITH.

TOLERANCES:  
UNLESS OTHERWISE SPECIFIED, DIMENSIONS ARE FOR REFERENCE PURPOSES ONLY.

|               |          |
|---------------|----------|
| DRAWN BY:     | DATE:    |
| Jason Nash    | 07/07/09 |
| CHECKED BY:   | DATE:    |
| Jeff McVicker | 07/07/09 |
| APPROVED BY:  | DATE:    |
| Jeff McVicker | 07/07/09 |

|   |                     |                 |     |
|---|---------------------|-----------------|-----|
| DRAWING TITLE:<br><b>Tactile Switch</b> |                     |                 |     |
| SIZE                                    | DWG. NO.            | ELECTRONIC FILE | REV |
| A                                       | Ta-1143             | Ta-1143.dwg     | A   |
| SCALE: NTS                              | U.O.M.: INCHES [mm] | SHEET: 1 OF 2   |     |