

ALL RIGHTS RESERVED. NO PORTION OF THIS PUBLICATION, WHETHER IN WHOLE OR IN PART CAN BE REPRODUCED WITHOUT THE EXPRESS WRITTEN CONSENT OF SPC TECHNOLOGY.

REVISIONS			DOC. NO. SPC-F005	* Effective: 12/21/98	* DCP No: 680			
DCP #	REV	DESCRIPTION	DRAWN	DATE	CHECKD	DATE	APPRVD	DATE
	A	Redrawn in Autcad	JAP	11/25/91				
1199	B	Redrawn and Renamed	JWM	11/8/01	JC	11/26/01	JC	11/26/01

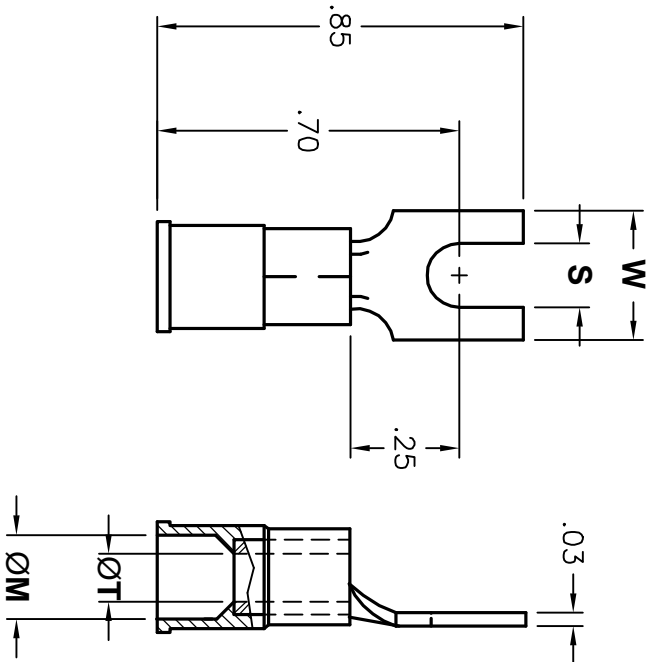
**Notes:**

Material: Electro-tin plated Copper

Insulating Material: Vinyl (PVC) UL94V-0

Voltage Rating: 600V

Operating Temp: -40°F to 221°F (-40°C ~ 105°C)



SPC Part Number	Wire Range (AWG)	Stud Size	S	W	T	M	Color	Seam
CBS-TV-1406	16 ~ 14	#6 (.138)	.148					
CBS-TV-1408	16 ~ 14	#8 (.164)	.174	.30	.090	.170	Blue	Butted Seam
CBS-TV-1410	16 ~ 14	#10 (.190)	.200					
CBS-TV-1804	22 ~ 18	#4 (.112)	.120	.25				Butted Seam
CBS-TV-1806	22 ~ 18	#6 (.138)	.148		.070	.145	Red	
CBS-TV-1808	22 ~ 18	#8 (.164)	.174	.30				Butted Seam
CBS-TV-1810	22 ~ 18	#10 (.190)	.200					
CBS-ZV-1406	16 ~ 14	#6 (.138)	.148					Brazed Seam
CBS-ZV-1408	16 ~ 14	#8 (.164)	.174	.30	.090	.170	Blue	
CBS-ZV-1410	16 ~ 14	#10 (.190)	.200					Brazed Seam
CBS-ZV-1806	22 ~ 18	#6 (.112)	.148					
CBS-ZV-1808	22 ~ 18	#8 (.138)	.174	.30	.070	.145	Red	Brazed Seam
CBS-ZV-1810	22 ~ 18	#10 (.164)	.200					

**DISCLAIMER:**  
 ALL STATEMENTS AND TECHNICAL INFORMATION CONTAINED HEREIN ARE BASED UPON INFORMATION AND/OR TESTS WE BELIEVE TO BE ACCURATE AND RELIABLE SINCE CONDITIONS OF USE ARE BEYOND OUR CONTROL. THE USER SHALL DETERMINE THE SUITABILITY OF THE PRODUCT FOR THE INTENDED USE AND ASSUME ALL RISK AND LIABILITY WHATSOEVER IN CONNECTION THEREWITH.



ES8918



LR22190M6

OSHA  
Acceptable

SPC-F005.DWG

DRAWN BY: JC		DATE: 3/7/91	DRAWING TITLE: Insulated Block Fork Terminals		SCALE: NTS		
CHECKED BY: JOHN COLE		DATE: 11/27/91	SIZE: A		DWG. NO. TA-441		
APPROVED BY: John Liska		DATE: 11/27/91	ELECTRONIC FILE: TA-441.dwg		REV: B		
Tolerances: Unless Otherwise Specified:		.X = ±.015		.XX = ±.010		.XXX = ±.005	
SHEET: 1		OF: 1		U.O.M.: INCHES [mm]		SHEET: 1 OF 1	



**SPC TECHNOLOGY**