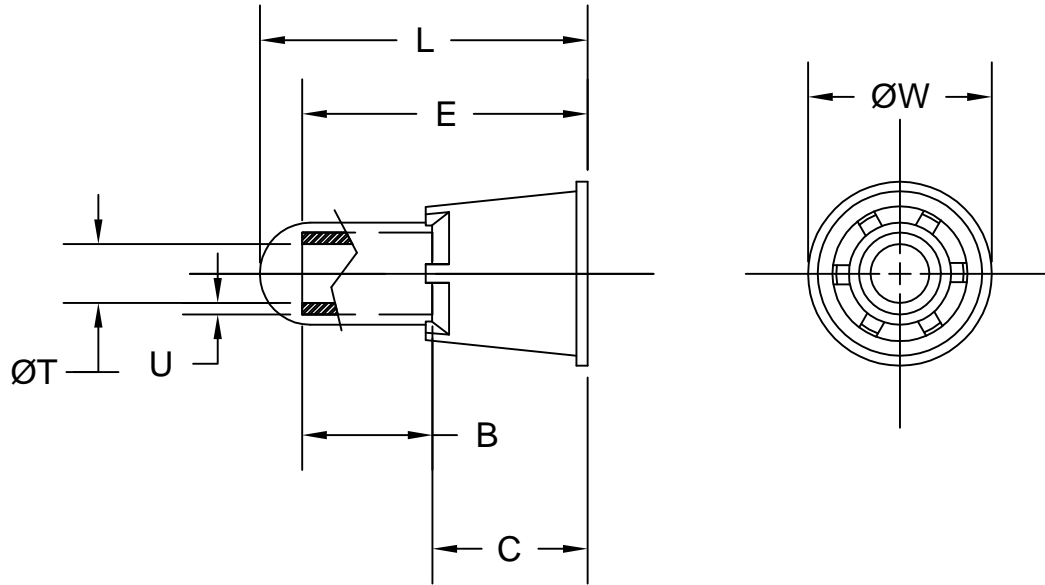


ALL RIGHTS RESERVED. NO PORTION OF THIS PUBLICATION, WHETHER IN WHOLE OR IN PART CAN BE REPRODUCED WITHOUT THE EXPRESS WRITTEN CONSENT OF SPC TECHNOLOGY.

DCP #		REV	DESCRIPTION	DRAWN	DATE	CHECKD	DATE	APPRVD	DATE
		A	Redrawn in AutoCAD	JAP	12/13/91				
1116	B		Drawing was CCN-ZY-****	JWM	5/25/01	JC	6/20/01	JC	6/20/01



NOTES:

- MATERIAL:  
HOUSING: NYLON 6/6  
COLOR: NATURAL  
INSERT: COPPER  
FINISH: CADMIUM PLATED
- FLAMMABILITY: UL94V-2
- CONTINUOUS USE TEMPERATURE:  
-40°F(-40°C) TO 221°F(105°C)
- VOLTAGE RATING: 600 V
- FOR COPPER WIRE COMBINATIONS  
SEE PAGE 2 OF 2.

PART NUMBER	WIRE RANGE (AWG)	L	B	E	C	W	T	U
CCN-ZY-1010	18 - 10	.85	.34	.76	.42	.48	.152	.025
CCN-ZY-1818	22 - 14	.76	.31	.58	.27	.31	.091	.020

<p><b>DISCLAIMER:</b> ALL STATEMENTS AND TECHNICAL INFORMATION CONTAINED HEREIN ARE BASED UPON INFORMATION AND/OR TESTS WE BELIEVE TO BE ACCURATE AND RELIABLE. SINCE CONDITIONS OF USE ARE BEYOND OUR CONTROL, THE USER SHALL DETERMINE THE SUITABILITY OF THE PRODUCT FOR THE INTENDED USE AND ASSUME ALL RISK AND LIABILITY WHATSOEVER IN CONNECTION THEREWITH.</p>					
<p>Tolerances: Unless Otherwise Specified: .X = ±.015 .XX = ±.010 .XXX = ±.005</p>	DRAWN BY: JC		DATE: 12/4/91		
	CHECKED BY: JOHN COLE		DATE: 12/13/91		
	APPROVED BY: John Liska		DATE: 12/13/91		
	DRAWING TITLE: Nylon Insulated Closed End Connectors				
		SIZE: A	DWG. NO.: TA-344	ELECTRONIC FILE: TA-344.dwg	REV: B
		SCALE: NTS	U.O.M.: INCHES [mm]	SHEET: 1 OF 2	

PART NUMBER	COPPER WIRE COMBINATIONS	HOW TO READ THE CHARTS
CCN-ZY-1010		<p>EXAMPLE:            USE 1 NO. 16 SOL + 4 NO. 18 STR (=5) WIRES TOTAL            THAT CAN BE CONNECTED USING A CCN-ZY-1010 CONNECTOR.</p>
CCN-ZY-1818		<p>EXAMPLE:            USE 1 NO. 16 STR + 3 NO. 22 STR (=4) WIRES TOTAL            THAT CAN BE CONNECTED USING A CCN-ZY-1818 CONNECTOR.</p>

SIZE A	DWG. NO. TA-344	ELECTRONIC FILE TA-344	REV B
SCALE: NTS		U.O.M.: INCHES [mm]	SHEET: 2 OF 2