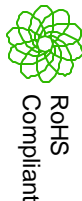


ALL RIGHTS RESERVED. NO PORTION OF THIS PUBLICATION, WHETHER IN WHOLE OR IN PART CAN BE REPRODUCED WITHOUT THE EXPRESS WRITTEN CONSENT OF SPC TECHNOLOGY.

SPC-FD06.DWG

REVISIONS		DOC. NO. SPC-FD06	Effective 7/8/02	Doc No 1308
DCP #	REV	DESCRIPTION	DATE	CHECKD
1957		Released	12/12/07	JWM
			08/17/08	JN
			08/17/08	JN



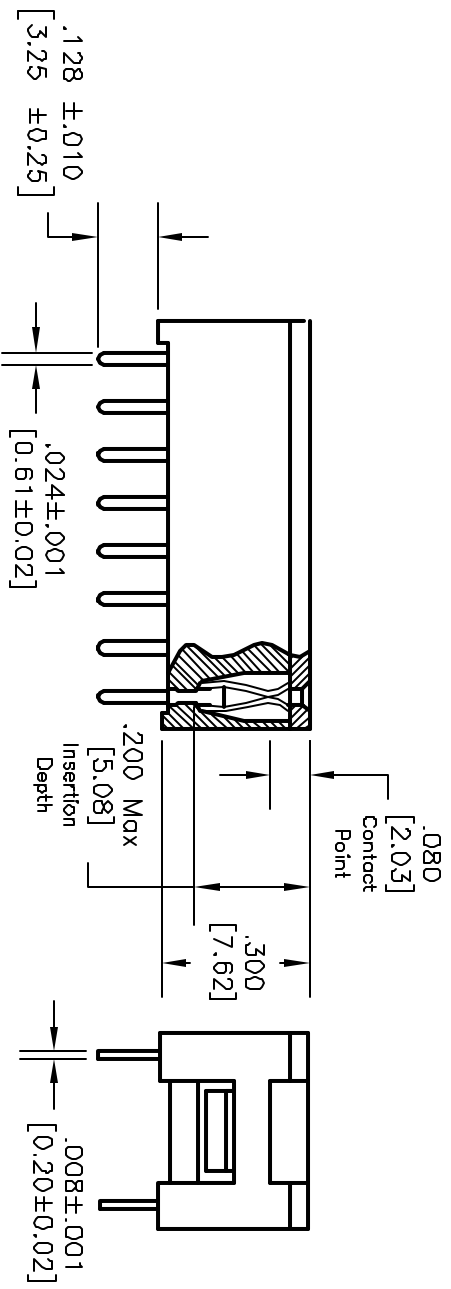
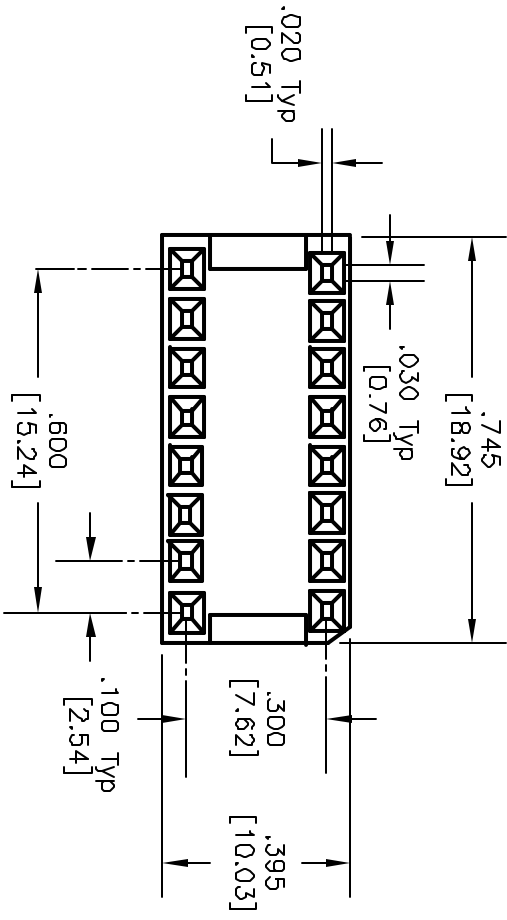
Features

- .024 [0.61] X .008 [0.20] solder tail
- Dual leaf edge wipe contacts designed to mate with DIP packages on .100 [2.54] centers

Specifications

- #### Environmental
- Temperature Range: -65°C to +125°C
- #### Mechanical
- Insulator Material: Glass filled polyester, black, UL94V-0
 - Contact Material: Phosphor Bronze
 - Contact Plating: 10m" gold
 - Contact Insertion Force: 6.2 oz [1.7 N] Typ; 10.6 oz [2.9 N] MAX Measured with .020 [0.51] dia pin
 - Contact Extraction Force: 1.8 oz [0.5N] Typ; 0.7 oz [0.2N] Min Measured with .0145 [0.37] dia pin
 - Recommended Mating Pin Size: .022 [0.56] x .020 [0.51] Max .010 [0.25] x .008 [0.20] Min

- #### Electrical
- Current Rating: 1 Amp
 - Voltage Rating: 300 Vrms
 - Dielectric Withstanding Voltage: 500 Vrms Min
 - Insulation Resistance: >5000 Megohms
 - Contact Resistance: 10 Milliohms Typ 30 Milliohms Max



TOLERANCES:

UNLESS OTHERWISE SPECIFIED, DIMENSIONS ARE FOR REFERENCE PURPOSES ONLY.

DISCLAIMER:
ALL STATEMENTS AND TECHNICAL INFORMATION CONTAINED HEREIN ARE BASED UPON INFORMATION AND/OR TESTS WE BELIEVE TO BE ACCURATE AND RELIABLE. SINCE CONDITIONS OF USE ARE BEYOND OUR CONTROL, THE USER SHALL DETERMINE THE SUITABILITY OF THE PRODUCT FOR THE INTENDED USE AND ASSUME ALL RISK AND LIABILITY WHATSOEVER IN CONNECTION THEREWITH.

DRAWN BY:	DATE:	DRAWING TITLE:	SIZE	DWG. NO.	ELECTRONIC FILE	REV
Jeff McVicker	12/12/07	14 Position DIP Socket - Solder Tails	A	SPC22186	26M8149.dwg	A
CHECKED BY:	DATE:	SCALE:	NTS	U.O.M.: INCHES [mm]	SHEET:	1 OF 1
Jason Nash	09/17/08					
APPROVED BY:	DATE:					
Jason Nash	09/17/08					