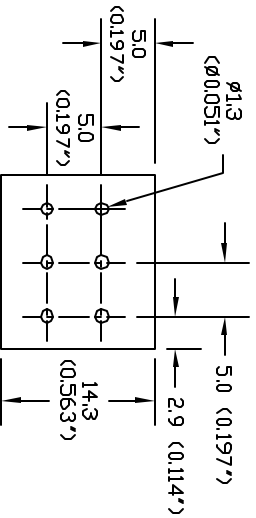
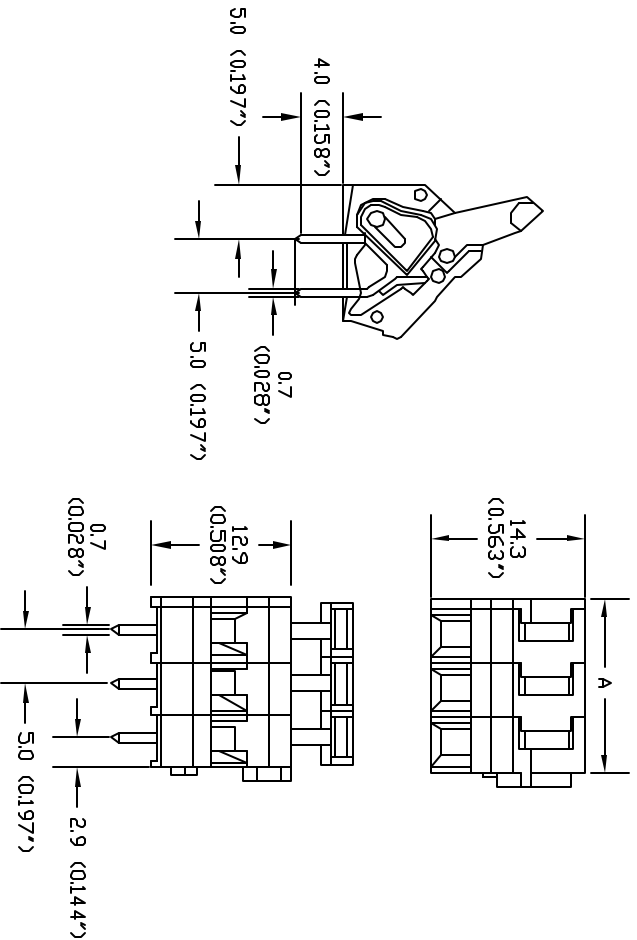


REVISONS		DOP. NO. SPC-F005 * Effective 7/8/02 * DCP No. 1398	
DCP #	REV	DESCRIPTION	
XX	XX	XXXX	
XXXX	XXXX		

DRAWN	DATE	CHECKD	DATE	APPRVD	DATE
XXXX	01-10-08	XXXX	01-10-08	XXXX	01-10-08
XXXX	01-10-08	XXXX	01-10-08	XXXX	01-10-08



PCB Layout

SPECIFICATIONS	UL	VDE
Rated Voltage	AC 300V	
Rated Current	16A	
Wire Size	28 ~ 14AWG	0.2 ~ 2.5mm ²
Housing Material	Polyamide66UL94V-0)	
Terminal	Brass, Tin plated	
Spring	Stainless strip steel	
Lever, Cover	Polyamide66UL94V-0)	
Operating Temperature	-40°C to +105°C	
PCB Hole Diameter	$\phi 1.3mm$	
UL File No.	E167040	



DISCLAIMER:
ALL STATEMENTS AND TECHNICAL INFORMATION CONTAINED HEREIN ARE BASED UPON INFORMATION AND/OR TESTS WE BELIEVE TO BE ACCURATE AND RELIABLE. SINCE CONDITIONS OF USE ARE BEYOND OUR CONTROL, THE USER SHALL DETERMINE THE SUITABILITY OF THE PRODUCT FOR THE INTENDED USE AND ASSUME ALL RISK AND LIABILITY WHATSOEVER IN CONNECTION THEREWITH.

TOLERANCES:
UNLESS OTHERWISE SPECIFIED, DIMENSIONS ARE FOR REFERENCE PURPOSES ONLY.

DRAWN BY:	DATE:
XXXX	01-10-08
CHECKED BY:	DATE:
XXXX	01-10-08
APPROVED BY:	DATE:
XXXX	01-10-08

DRAWING TITLE:		Screwless with Lever	
SIZE	DWG. NO.	ELECTRONIC FILE	REV
A	MC24400	14N5729	XX
SCALE:	NTS	U.D.M., INCHES [MM]	SHEET: 1 OF 1