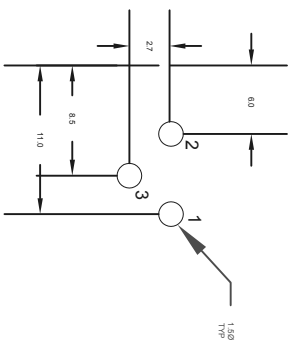
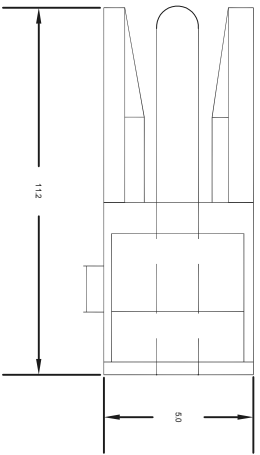
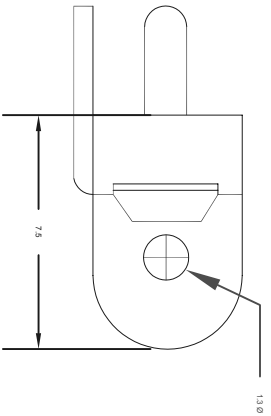




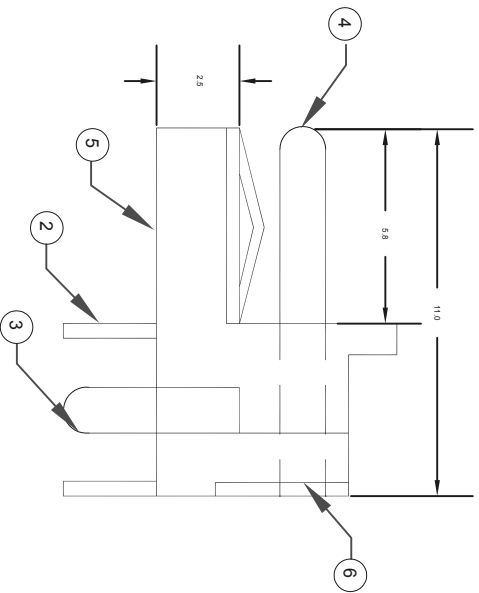
SPC
TECHNOLOGY

ALL RIGHTS RESERVED. NO PORTION OF THIS PUBLICATION, WHETHER IN WHOLE OR IN PART CAN BE REPRODUCED WITHOUT THE EXPRESS WRITTEN CONSENT OF SPC TECHNOLOGY.
SPC-F005.DWG

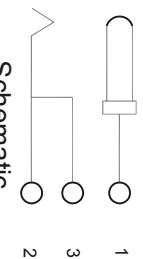
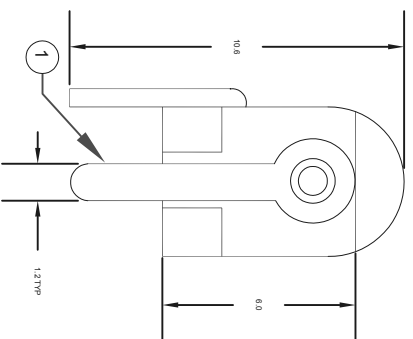
REVISIONS		DOC. NO. SPC-F005	* Effective: 7/8/02	* DCP No: 1398				
DCP #	REV	DESCRIPTION	DRAWN	DATE	CHECKD	DATE	APPRVD	DATE
			AMU	16-08-10	MRD	18-08-10	XXX	25-08-10



PCB LAYOUT (TOP VIEW)



Dimensions : Inches



Schematic

ITEM	DESCRIPTION	QTY.	MATERIAL/FINISH
1	PIN TERMINAL	1	4 BRASS-SILVER PLATED
2	SLEEVE TERMINAL	1	2 PHOSPHOR BRONZE-SILVER PLATED
3	SLEEVE SHUNT	1	4 BRASS-SILVER PLATED
4	PIN	1	BRASS-NICKEL PLATED
5	HOUSING	1	PBT-10% GLASS, UL94V-0, BLACK
6	COVER	1	PBT-10% GLASS, UL94V-0, BLACK

TOLERANCES:

UNLESS OTHERWISE SPECIFIED, DIMENSIONS ARE FOR REFERENCE PURPOSES ONLY.

DISCLAIMER:
ALL STATEMENTS AND TECHNICAL INFORMATION CONTAINED HEREIN ARE BASED UPON INFORMATION AND/OR TESTS WE BELIEVE TO BE ACCURATE AND RELIABLE. SINCE CONDITIONS OF USE ARE BEYOND OUR CONTROL, THE USER SHALL DETERMINE THE SUITABILITY OF THE PRODUCT FOR THE INTENDED USE AND ASSUME ALL RISK AND LIABILITY WHATSOEVER IN CONNECTION THEREWITH.

DRAWN BY:	AMU	DATE:	16-08-10
CHECKED BY:	MRD	DATE:	18-08-10
APPROVED BY:	XXX	DATE:	25-08-10

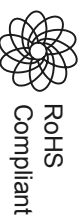
DRAWING TITLE:

Power Jack

SIZE	DWG. NO.	SCALE:	NTS
XXX	XXX	U.O.M.:	INCHES [mm]

DESCRIPTION	PART NUMBER
Power Jack	SPC21372

ELECTRONIC FILE	REV
84N1190	A
SHEET: 1	OF 1



- Specifications:**
- Electrical :**
1. Contact Rating : 0.30A at 16VDC
 2. Contact Resistance : 30 milliohms maximum
 3. Insulation Resistance : 100 Megohms minimum at 500VDC
 4. Dielectric Strength: 500VAC for 1 minute
- Mechanical :**
1. Insertion Force : 0.3 to 2.0kg
 2. Withdrawal Force : 0.3 to 2.0kg
 3. Operating Life : 5000 cycles