



## Ambient Light Sensor Development Kit

### Description

The ambient light sensor development kit allows developers to quickly and easily evaluate any of Vishay's ambient light sensors. The development kit is built-to-order that includes the sensor board, adapter board and Windows® based software. The sensor board includes the customer's selected ambient light sensor, a programmable preamplifier (PGA), a 16-bit analog-to-digital converter and an I<sup>2</sup>C bus interface. The adapter board serves as the bridge from the I<sup>2</sup>C interface to the PC port. It also provides power to the sensor board.



### Features of Kit

- Convenient RS-232, I<sup>2</sup>C-port interface
- Sensor board allows direct connection to customer's host I<sup>2</sup>C bus
- Up and running in 5 minutes
- No additional power cables required
- 9-pin serial cable included
- Windows-based software with:
  - Programmable sampling rate and gain
  - Displays illumination in Lux, mA, voltage, decimal and hexadecimal
- DOS version also available

### Features of Ambient Light Sensors

- Designed to react to light just like the human eye
- Simple 2-pin connection
- Phototransistor output requires no amplifier
- Lead (Pb)-free component
- RoHS compliant

### Ambient Light Sensors

- TEMT6000 - SMD 1206 package, ± 60° φ
- TEPT5600 - 5 mm leaded, ± 20° φ
- TEPT5700 - 5 mm leaded, ± 60° φ
- TEPT4400 - 3 mm leaded, ± 30° φ
- TEMT6200F - SMD 0805 package, ± 60° φ

### Order Instruction

TEMT6000DevKit	TEMT6200FDevKit	TEPT4400DevKit
TEPT5700DevKit	TEPT5600DevKit	

### Hardware

#### Sensor Board

The sensor board consists of the customer's selected ambient light sensor, a programmable preamplifier (PGA), a 16-bit analog-to-digital converter and an I<sup>2</sup>C bus interface. With only a few additional external components, it can connect directly to the customer's host I<sup>2</sup>C bus. The schematic of the sensor board is shown in Figure 1 while the top- and bottom-side is shown in Figure 2.

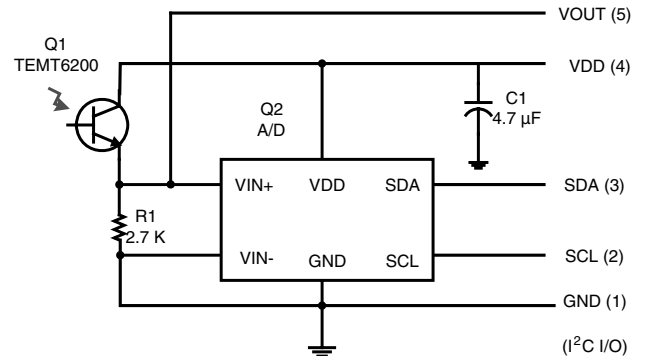


Figure 1.



Figure 2.

## I<sup>2</sup>C - RS232 Adapter Board

The I<sup>2</sup>C-RS232 adapter board derives its power from the RS-232 port to which it is connected. The RS-232 port interfaces to the sensor board's I<sup>2</sup>C connection. The function of each of the RS-232 signal pins is shown in Table 1.

Table 1. RS-232 Signal Functions

Pin	Signal Name	Sensor Board I/O	Function
1	DCD	Output	Not Used
2	RD	Output	Not Used
3	TD	Input	SCL Control
4	DTR	Input	Power Supply
5	SG	Ground	Ground
6	DSR	Output	SDA Output
7	RTS	Input	SDA Control
8	CTS	Output	Not Used
9	RI	Output	Not Used

Three inputs from the computer are used. With DTR set to high, power is supplied to the boards. To control the serial clock (SCL), TD is used. To control the serial data (SDA), RTS is used. This same line serves as a kind of "read-able" or "release SDA" for host reading SDA from the slave through DSR.

To install the Ambient Light Sensor Development Kit, simply plug the small sensor board into the blue 10-edge connector of the I<sup>2</sup>C-RS232 adapter. Then plug the adapter into a PC RS-232 port.

## Software

To install the Windows software, unzip the [AmbientLightSensorDevKit.zip](#) in a directory. To load the DLL files, unzip the [AmbientLightSensorDevKitDLL.zip](#) in the same directory. To run the program, double click the executable file [SensorDevKit.exe](#).

The development software functions as a simple digital voltmeter to measure the light current of the ambient light sensor. When the program starts, it searches serial ports from COM1 thru COM4 for the ambient light sensor. If this search fails, a warning message is displayed, Figure 3. Possible causes include:

- COM1 thru COM4 are unavailable. A port must be enabled or released
- The sensor board is plugged-in incorrectly. The chip and capacitor are on the top-side and the sensor is on the bottom-side. See Figure 2.
- The adapter or the sensor board is not functioning and must be replaced



Figure 3.

Click OK. Make the necessary changes. Click Rescan located in the upper right-hand corner of the main program window to reinitiate the sensor board search.

The main program window is shown in Figure 4 and has the following features :

- Data from the sensor board is displayed on the top half of the screen. The data is displayed in hexadecimal, decimal, voltage, current in  $\mu\text{A}$ , and illuminance in lux
- Status messages are displayed at the very bottom
- Hardware configuration is shown in the lower right corner. The connected COM port is shown along with configuration data read from the configuration file. See Configuration File below for more information
- Conversion Mode selection and the interval update setting box is shown in the lower middle
- The Gain selection box is shown in the lower left corner. The buttons in the Gain box are used to change the PGA setting. Note that changing the PGA setting often will cause little change in the voltage reading because the voltage reading reflects the voltage present at the input pins. The initial gain is set in the configuration file

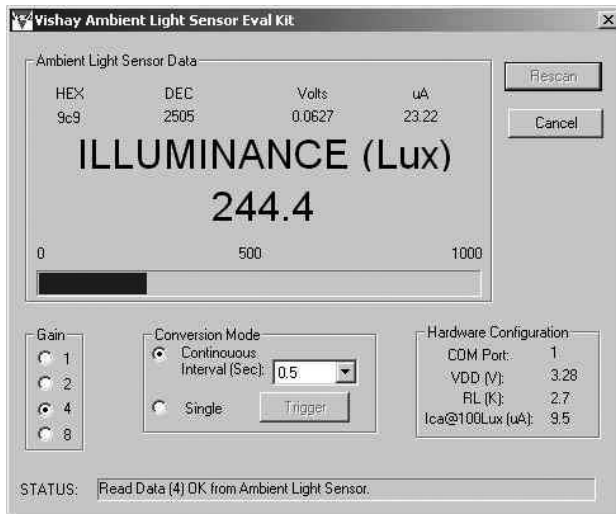


Figure 4.

## Conversion Mode

The development software supports both single and continuous conversion modes. In continuous conversion mode the software reads from the sensor board every  $1/8^{\text{th}}$  of a second and displays the average of the readings. The time interval for continuous readings and conversion is selected via a pull down menu in the Conversion Mode box. The longer the time selected, the more readings are taken and the more accurate the results will be. For example if the interval is 0.5 seconds, the software will calculate the average of the 4 readings taken every  $1/8^{\text{th}}$  of a second. This software feature is designed to increase the immunity

from the 50/60 Hz interference or noise. In single conversion mode, click the Trigger button to take a single reading.

## Gain

The voltage converter is a 16-bit analog-to-digital converter with differential inputs and a preamplifier. The preamplifier gain is programmable to 1, 2, 4 and 8 times. Its positive full-scale is  $0x7FFF$  (32767). If the input and the gain are too high, the converter output may be out-of-range ( $0x7FFF$ ) as shown in Figure 5. In this case, the gain must be reduced. First, try choosing a lower gain value. If the reading is still out-of-range, the value of the resistor,  $R_L$ , must be reduced.

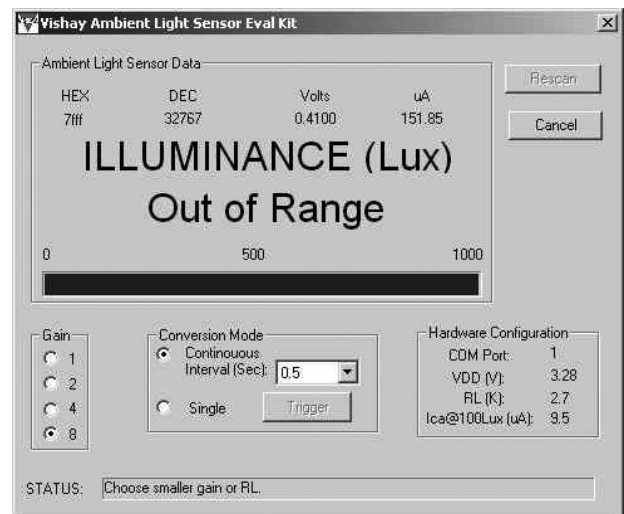


Figure 5.

## Program Calculations

The following calculations are performed by in the software program:

The input light voltage,  $V_{RL}$  (mV), calculation is a function of the code read from the ADC (newcode), the preamplifier gain (GAIN) and the power supply,  $V_{DD}$ .

$$V_{RL} = (\text{newcode} * V_{DD}) / (\text{GAIN} * 32768)$$

The sensor light current,  $I_P$  ( $\mu\text{A}$ ), calculation is a function of the input voltage,  $V_{RL}$ , and the load resistor,  $R_L$ .

$$I_P = V_{RL} / R_L * 1000$$

The light illuminance,  $E_v$  (lux), depends on the sensor responsivity,  $\text{Resp}$  ( $\mu\text{A}$  at 100 lux)

$$E_v = (100 * I_P / \text{Resp}).$$

## Configuration File

The included text file, [AmbientLightSensorDevKit.txt](#) shows a sample of the configuration that sets hardware values used in the executable program data calibration and calculations. The configuration file should be kept in the same directory as the other files. If the configuration file must be changed, modify only the number after the colon. Do not change the names.

The following is an example of a configuration file:

```
VDD(V): 3.28  
RL(KOhm): 2.7  
ICA at 100 LUX ( $\mu$ A): 9.7  
Gain: 2
```

**VDD** is the power reference voltage, which is the same as the power supply.

**RL** is the sensor load resistance, which converts the sensor current to voltage. It should be equal to the value of R1 on the board.

**ICA** is the calibrated sensor responsivity (light current at 100 lux).

**Gain** is an index number from 0 to 3 referring to the preamplifier gain 1, 2, 4 and 8.



## Ozone Depleting Substances Policy Statement

It is the policy of Vishay Semiconductor GmbH to

1. Meet all present and future national and international statutory requirements.
2. Regularly and continuously improve the performance of our products, processes, distribution and operating systems with respect to their impact on the health and safety of our employees and the public, as well as their impact on the environment.

It is particular concern to control or eliminate releases of those substances into the atmosphere which are known as ozone depleting substances (ODSs).

The Montreal Protocol (1987) and its London Amendments (1990) intend to severely restrict the use of ODSs and forbid their use within the next ten years. Various national and international initiatives are pressing for an earlier ban on these substances.

Vishay Semiconductor GmbH has been able to use its policy of continuous improvements to eliminate the use of ODSs listed in the following documents.

1. Annex A, B and list of transitional substances of the Montreal Protocol and the London Amendments respectively
2. Class I and II ozone depleting substances in the Clean Air Act Amendments of 1990 by the Environmental Protection Agency (EPA) in the USA
3. Council Decision 88/540/EEC and 91/690/EEC Annex A, B and C (transitional substances) respectively.

Vishay Semiconductor GmbH can certify that our semiconductors are not manufactured with ozone depleting substances and do not contain such substances.

We reserve the right to make changes to improve technical design and may do so without further notice.

Parameters can vary in different applications. All operating parameters must be validated for each customer application by the customer. Should the buyer use Vishay Semiconductors products for any unintended or unauthorized application, the buyer shall indemnify Vishay Semiconductors against all claims, costs, damages, and expenses, arising out of, directly or indirectly, any claim of personal damage, injury or death associated with such unintended or unauthorized use.

Vishay Semiconductor GmbH, P.O.B. 3535, D-74025 Heilbronn, Germany



### Notice

Specifications of the products displayed herein are subject to change without notice. Vishay Intertechnology, Inc., or anyone on its behalf, assumes no responsibility or liability for any errors or inaccuracies.

Information contained herein is intended to provide a product description only. No license, express or implied, by estoppel or otherwise, to any intellectual property rights is granted by this document. Except as provided in Vishay's terms and conditions of sale for such products, Vishay assumes no liability whatsoever, and disclaims any express or implied warranty, relating to sale and/or use of Vishay products including liability or warranties relating to fitness for a particular purpose, merchantability, or infringement of any patent, copyright, or other intellectual property right.

The products shown herein are not designed for use in medical, life-saving, or life-sustaining applications. Customers using or selling these products for use in such applications do so at their own risk and agree to fully indemnify Vishay for any damages resulting from such improper use or sale.