

Recommended process solutions

Power quality

Best suited for:

- Troubleshooting and preventing problems in power distribution systems

Applications:

Generators, harmonics (electronics), load studies



Thermal imagers

Best suited for:

- Displaying a visual image of surface temperatures to easily and safely identify potential problems

Applications:

Steam traps, electrical panels, motors, VFDs



ProcessMeter test tools

Best suited for:

- Troubleshooting and calibrating current loop applications using the functionality of a loop calibrator and digital multimeter built into one tool.

Applications:

Measure, source, and simulate dc loop current



Infrared thermometers

Best suited for:

- Surface temperature readings
- Finding heating and ventilation problems
- Non-contact monitoring of electrical motors and panels

Applications:

Heating, motors, cooling, circuit breakers



More recommended process solutions

Documenting process calibrator

Best suited for:

- Calibrating and maintaining of process instrumentation and control systems.
- Sourcing, measuring and documenting virtually any process variable

Applications:

Pressure and temperature transmitter calibration; calibration and configuration of HART devices; documenting field calibrations for recall and upload



Insulation multimeter

Best suited for:

- Insulation resistance and digital multimeter tests including simple spot checks to timed tests
- Troubleshooting and preventive maintenance

Applications:

Switchgear, motors, variable speed drives, generators, electrical systems and cables; test voltages from 50 V to 1000 V (Insulation tester to 5000 V also available)



Pressure calibrator

Best suited for:

- Pressure calibration of transmitters, gauges and switches
- Maintenance of almost any pressure device using pressure sourcing and milliamp measurements
- Calibrating P/I instruments with simultaneous pressure and current measurement

Applications:

Pressure measurements using internal sensor; measure mA while sourcing 24 V loop



mA Process clamp meter

Best suited for:

- Measuring 4 to 20 mA output signals from transmitters *without breaking the loop*
- Measuring mA signals for PLC and control system analog I/O

Applications:

mA loop troubleshooting, maintenance and repair



Temperature calibrator

Best suited for:

- Troubleshooting and calibrating temperature
- Testing temperature sensors and transmitters
- Measuring and sourcing thermocouples and RTD's, plus volts and ohms

Applications:

Measure thermocouples, RTDs, ohms, and volts to test sensors and transmitters; calibrate transmitters by sourcing/simulating thermocouples, RTDs, volts, and ohms; executing remote tests with auto step and auto ramp; powering transmitters during test using loop power supply with simultaneous mA measurement; calibrating linear TC transmitter



Handheld oscilloscopes

Best suited for:

- Troubleshooting and installation applications
- Finding fast answers to problems in machinery, instrumentation, control and power systems
- Bus health testing for industrial bus systems
- Applications when you need oscilloscope, multimeter and "paperless" recorder, but want to carry a single tool

Applications:

Oscilloscope, resistance and continuity measurement; high frequency measurements; bus health and power measurements



Access a variety of application notes, case studies, and posters applicable to the process industry at www.fluke.com.

Intrinsically Safe Test Tools and Standards

Certification	Fluke products	Main application	North American rating		
			Division 1	Division 2	
			European ATEX		
			Zone 0	Zone 1	Zone 2
			Gas Presence		
			>1000 hours/year	>10 hours, < 1000 hours/year	< 1 hour, < 10 hours/year

707Ex Loop Calibrator
Source and measure mA signals

718Ex Pressure Calibrator
Calibrate pressure transmitters and switches

725Ex Multimeter
Calibrate almost any process device

87V-Ex Intrinsic Ex Multimeter
True-rms IEC-100 CAT IV 600 V rating

Gas Presence
Gases (North American and Zone 0, 20% LEL gas present)

All Gases
All Gases

How do you know if the combination of test tool and device under test is safe?



Visit www.fluke.com/tes and order a free intrinsically safe training CD.



Process industries. Working for all of us.

Fluke solutions for process professionals.

The process industries include a broad spectrum of industries such as food/beverages, chemicals, petroleum, pharmaceuticals, metals, water/waste water, and pulp/paper. People working in these industries know what tough, unforgiving environments they can be. It is critical to maintain stable, continuous operations without sacrificing safety or quality.

Fluke makes rugged, reliable, quality tools designed for process environments, the professionals who work there, and the challenges they face everyday.

Fluke. Keeping your world up and running.®

Fluke Corporation
PO Box 9090, Everett, WA 98206 U.S.A.

Fluke Europe B.V.
PO Box 1186, 5602 BD
Eindhoven, The Netherlands

For more information call:
In the U.S.A. (800) 443-5853 or
Fax (425) 446-5116
In Europe/M-East/Africa +31 (0) 40 2675 200 or
Fax +31 (0) 40 2675 222
In Canada (800)-36-FLUKE or
Fax (905) 890-6866
From other countries +1 (425) 446-5500 or
Fax +1 (425) 446-5116
Web access: <http://www.fluke.com>

©2008 Fluke Corporation.
Specifications subject to change without notice.
Printed in U.S.A. 4/2008 3326624 B-EN-N Rev A

FLUKE®

FLUKE®



Maintenance Superintendent

What issues do you face?

- Ensuring continuous, predictable uptime
- Safety of personnel and the environment
- Maintaining high product quality
- Budget restrictions

Fluke solutions:

- ◆ Thermal imaging
- Power quality
- ▲ Process tools

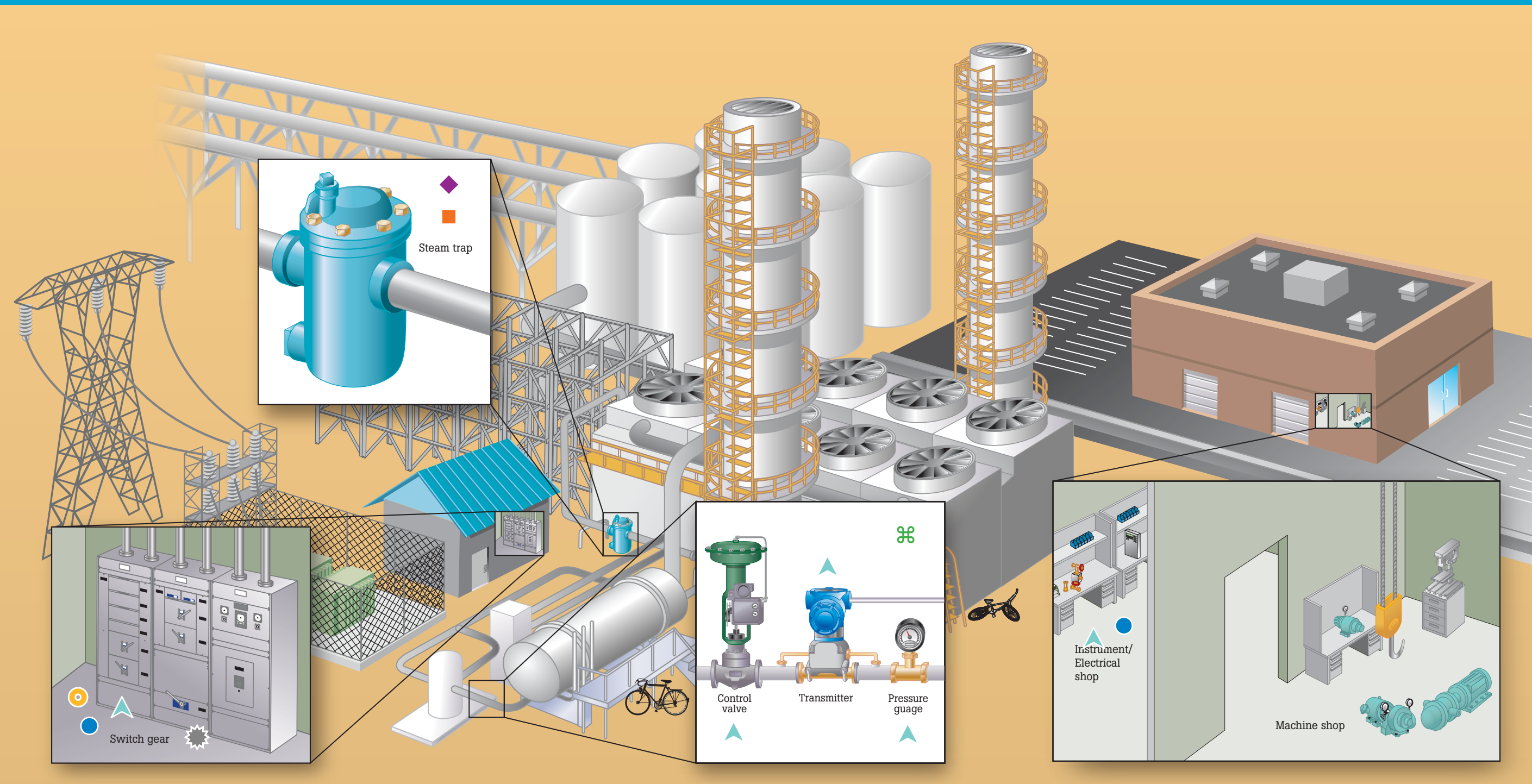
Instrument Technician

What issues do you face?

- Downtime prevention
- Safety systems testing
- Troubleshooting process interruption with immediate response and repair

Fluke solutions:

- ▲ Process tools
- ▲ Documenting process calibrators
- Handheld oscilloscopes
- ▲ Pressure calibrators
- ⌘ Loop calibrators



Mechanic/Millwright

What issues do you face?

- Equipment installation, preventive maintenance, repairs
- Machinery assembly
- Determining optimal machinery placements

Fluke solutions:

- ▲ Process tools
- Infrared thermometers
- ◆ Thermal imaging

Electrician

What issues do you face?

- Efficient, consistent, quality power delivery from utility or power generation to process systems
- Safety and high energy system maintenance
- Controlling efficient breakers and motors

Fluke solutions:

- Power quality
- Infrared thermometers
- ▲ Process tools
- ⚡ Insulation multimeters

Diagram is not intended to be an exact representation. Diagram components are not to scale and are for illustration purposes only.

Fluke process solutions

Fluke offers a full line of process test and measurement solutions. Go to www.fluke.com for detailed information on these products and all the Fluke process industries solutions.

Process tools	Power quality analyzers	Documenting process calibrators	Pressure calibrators	Loop calibrators	Thermal imagers	Temperature calibrators	Infrared thermometers	Insulation multimeter	Handheld oscilloscopes
78X series 725/726 771	43X Series	74X series	717/718	715 70X Series	Ti Series	724 712/714	6X series 56X series	1587	125