

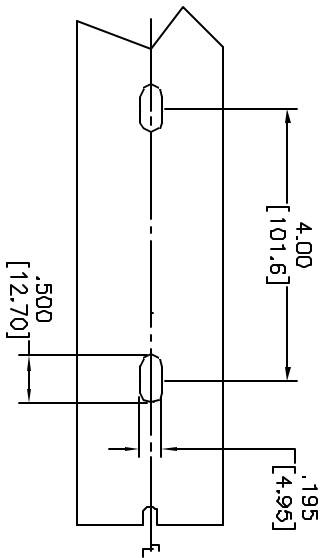
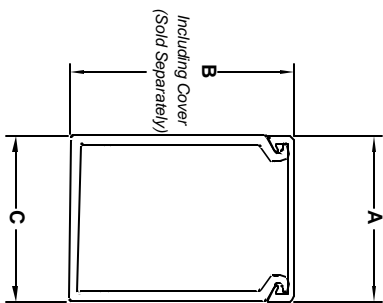
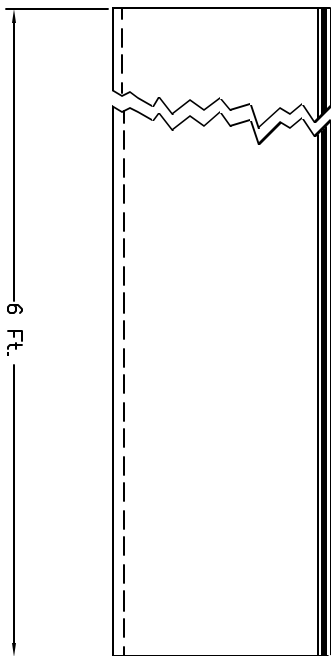
ALL RIGHTS RESERVED. NO PORTION OF THIS PUBLICATION, WHETHER IN WHOLE OR IN PART CAN BE REPRODUCED WITHOUT THE EXPRESS WRITTEN CONSENT OF SPC TECHNOLOGY.

REVISIONS		DOC. NO.	SPC-F005	Effective:	12/21/98	DCP No:	880	
DCP #	REV	DESCRIPTION	DRAWN	DATE	CHECKD	DATE	APPRVD	DATE
1336	B	Redrawn as TA-499	JWM	2/28/92	JC	3/1/92	JC	3/1/92



Dimensions

SPC Type No.	Nominal Duct Size	A	B	C
WDWT-0202-72	.5 x .5 [12.7 x 12.7]	.76 [19.3]	.55 [14.0]	.50 [12.7]
WDWT-0204-72	.5 x 1 [.5 x 25.4]	.76 [19.3]	1.05 [26.7]	.50 [12.7]
WDWT-0303-72	.75 x .75 [19.1 x 19.1]	1.01 [25.7]	.80 [20.3]	.75 [19.1]



Typical Mounting Hole Dimensions

- NOTES:**
1. Material: PVC
 2. Color: Gray
 3. Flammability Rating: UL94V-0

DISCLAIMER
 ALL STATEMENTS AND TECHNICAL INFORMATION CONTAINED HEREIN ARE BASED UPON INFORMATION AND/OR TESTS WE BELIEVE TO BE ACCURATE AND RELIABLE. SINCE CONDITIONS OF USE ARE BEYOND OUR CONTROL, THE USER SHALL DETERMINE THE SUITABILITY OF THE PRODUCT FOR THE INTENDED USE AND ASSUME ALL RISK AND LIABILITY WHATSOEVER IN CONNECTION THEREWITH.

UNLESS OTHERWISE SPECIFIED, DIMENSIONS ARE FOR REFERENCE PURPOSES ONLY.

DRAWN BY: JC		DATE: 8/29/91		<p>SPC TECHNOLOGY</p> <p>Solid Wiring Duct</p>	
CHECKED BY:		DATE:			
APPROVED BY:		DATE:			
DRAWING TITLE:		SIZE: A	DWG. NO.: TA-499	ELECTRONIC FILE: TA-499.dwg	REV: B
SCALE: NTS		U.O.M.: INCHES [mm]		SHEET: 1 OF 1	