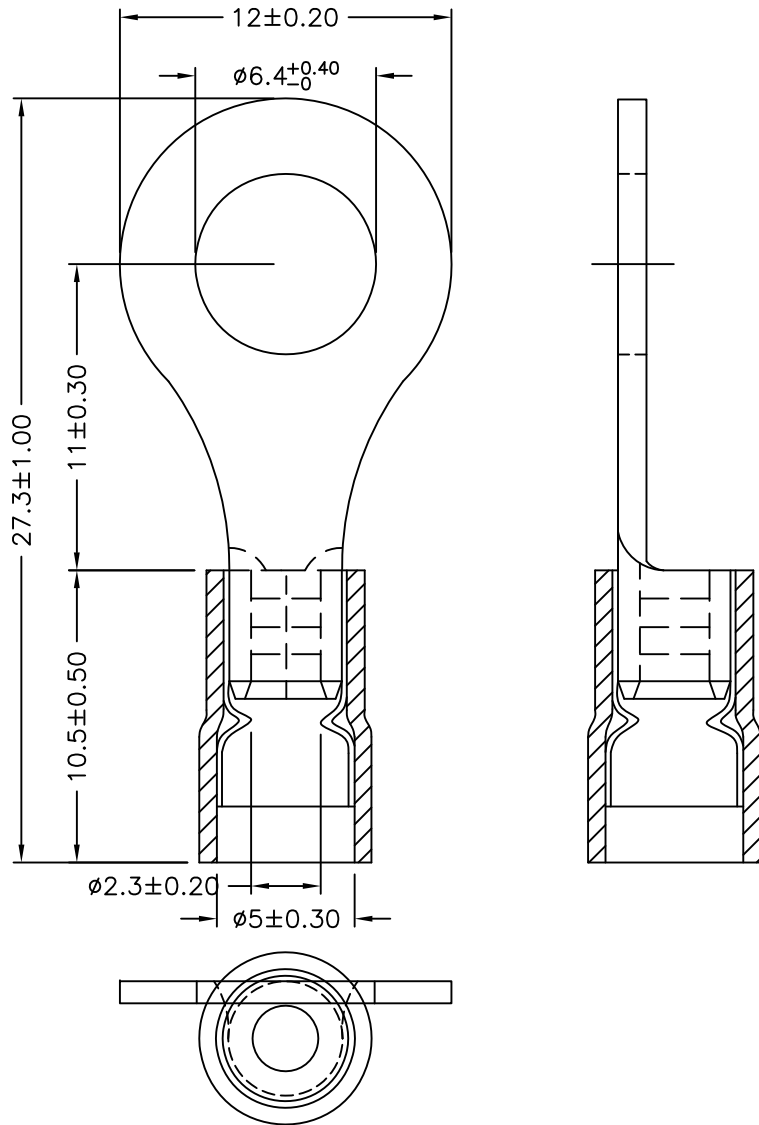


REVISIONS

DCP #	REV	DESCRIPTION	DRAWN	DATE	CHECKD	DATE	APPRVD	DATE
2022	A	RELEASED	JN	06/05/09	JWM	06/05/09	JWM	06/05/09



NOTE:

1. MAXIMUM ELECTRIC CURREENT: $\frac{\text{A.W.G.}}{\text{AMP.}} \left| \begin{array}{l} 16 \quad 14 \\ 18 \quad 30 \end{array} \right.$
2. MAXIMUM ELECTRICAL RATING: 75°C 600 VOLTS MAX.
3. INSULATION MATERIAL: VINYL
4. INSULATION COLOR: BLUE
5. TERMINAL MATERIAL: COPPER
6. WIRE RANGE: 16-14 A.W.G (1.5-2.5 mm²)
7. DOUBLE CRIMP: WITH COPPER SLEEVE ON BARREL
8. TERMINAL SURFACE TREATMENT: TIN PLATED
9. TERMINAL THICKNESS: 0.80mm

DISCLAIMER:
ALL STATEMENTS AND TECHNICAL INFORMATION CONTAINED HEREIN ARE BASED UPON INFORMATION AND/OR TESTS WE BELIEVE TO BE ACCURATE AND RELIABLE. SINCE CONDITIONS OF USE ARE BEYOND OUR CONTROL, THE USER SHALL DETERMINE THE SUITABILITY OF THE PRODUCT FOR THE INTENDED USE AND ASSUME ALL RISK AND LIABILITY WHATSOEVER IN CONNECTION THEREWITH.

TOLERANCES:
UNLESS OTHERWISE SPECIFIED, DIMENSIONS ARE FOR REFERENCE PURPOSES ONLY.

DRAWN BY:	DATE:
Jason Nash	06/05/09
CHECKED BY:	DATE:
Jeff McVicker	06/05/09
APPROVED BY:	DATE:
Jeff McVicker	06/05/09

DRAWING TITLE:			
Terminal			
SIZE	DWG. NO.	ELECTRONIC FILE	REV
A	MC32771	46P9959.dwg	A
SCALE:	U.O.M.:	SHEET:	
NTS	INCHES [mm]	1 OF 1	