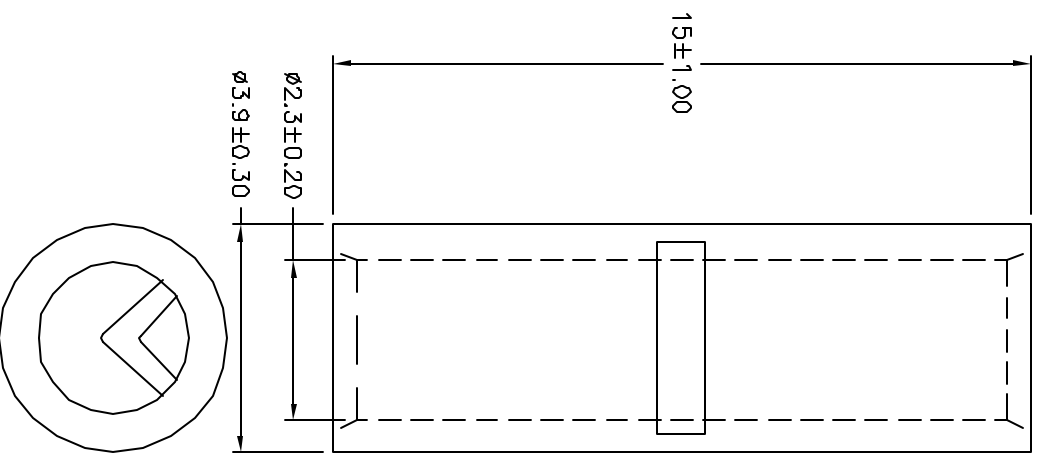


ALL RIGHTS RESERVED. NO PORTION OF THIS PUBLICATION, WHETHER IN WHOLE OR IN PART CAN BE REPRODUCED WITHOUT THE EXPRESS WRITTEN CONSENT OF SPC TECHNOLOGY.

SPC-F003.DWG

REVISIONS		DOC. NO.	SPC-F003	Effective	7/8/02	Doc No	1308	
DWG #	REV	DESCRIPTION	DRAWN	DATE	CHECKD	DATE	APPRVD	DATE
2022	A	RELEASED	JIN	1/07/09	JVM	1/07/09	JVM	1/07/09



- NOTE:**
1. MAXIMUM ELECTRIC CURREENT: $\frac{A.W.G.}{AMP.}$

16	14
18	30
 2. WIRE RANGE: 16-14 A.W.G (1.5-2.5 mm²)
 3. SURFACE TREATMENT: NICKEL PLATED

DISCLAIMER:
 ALL STATEMENTS AND TECHNICAL INFORMATION CONTAINED HEREIN ARE BASED UPON INFORMATION AND/OR TESTS WE BELIEVE TO BE ACCURATE AND RELIABLE. SINCE CONDITIONS OF USE ARE BEYOND OUR CONTROL, THE USER SHALL DETERMINE THE SUITABILITY OF THE PRODUCT FOR THE INTENDED USE AND ASSUME ALL RISK AND LIABILITY WHATSOEVER IN CONNECTION THEREWITH.

TOLERANCES:		DRAWING TITLE:	
UNLESS OTHERWISE SPECIFIED, DIMENSIONS ARE FOR REFERENCE PURPOSES ONLY.		Terminal; Connector Type: Butt Splice	
DRAWN BY:	DATE:	SIZE	DWG. NO.
Jason Nash	1/07/09	A	MC29362
CHECKED BY:	DATE:	SCALE:	ELECTRONIC FILE
Jeff McVicker	1/07/09	NTS	34P2131.dwg
APPROVED BY:	DATE:	U.O.M.: INCHES [mm]	REV
Jeff McVicker	1/07/09		A
		SHEET:	1 OF 1