

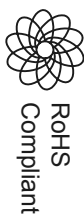
ALL RIGHTS RESERVED. NO PORTION OF THIS PUBLICATION, WHETHER IN WHOLE OR IN PART CAN BE REPRODUCED WITHOUT THE EXPRESS WRITTEN CONSENT OF SPC TECHNOLOGY.

SPC-F005.DWG

REVISIONS

DCP #	REV	DESCRIPTION	DRAWN	DATE	CHECKD	DATE	APPRVD	DATE
			SHA	13-08-10	JAG	20-08-10	XXX	27-08-10

DOC. NO. SPC-F005 * Effective: 7/8/02 * DCP No: 1398



Part Number Table

Description	Part Number
Panel Mount Fuseholder	MCHTB-441-RH

Agency Approvals : UL Recognized - Guide IZLIT2, File E14853 20A (3/16" quick-connect 15A) at 250 VAC

VDE - 10A at 250 VAC, 49890

SEMKO - 10A at 250 VAC, 8945092, 9005230

Electrical Data : Insulation resistance (per IEC #257) - 10,000 ohms at 500VDC;

Contact resistance (per IEC #257) - 0.005 ohms maximum at 1A;

Stand-off voltage (per IEC #257) - 480V/Mill at 125 in thickness

Environmental : Minimum/Maximum operating temperature -55°C to 85°C

Molded Components : High temperature, flame retardant, thermoplastic: UL Component Recognized: 94V0.; mounting nut, spacer-blac polycarbonate.

Terminals : Tin-plated brass.

Mounting : Withstands 15 to 20 lbs-ins torque to mounting nut when mounting Fuseholder to panel, Maximum panel thickness 0.300 inches.

CE : logo denotes compliance with European Union Low voltage Directive (50-1000 VAC, 75-1500 VDC).

Dimensional Data :

LENGTH: 1.89 (42.9)

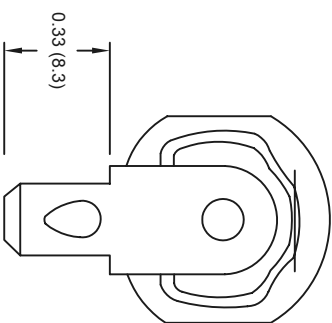
MAXIMUM PANEL THICKNESS: 0.125 (3.18)

TERMINAL: SOLDER OR 3/16" QUICK-CONNECT, RIGHT ANGLE

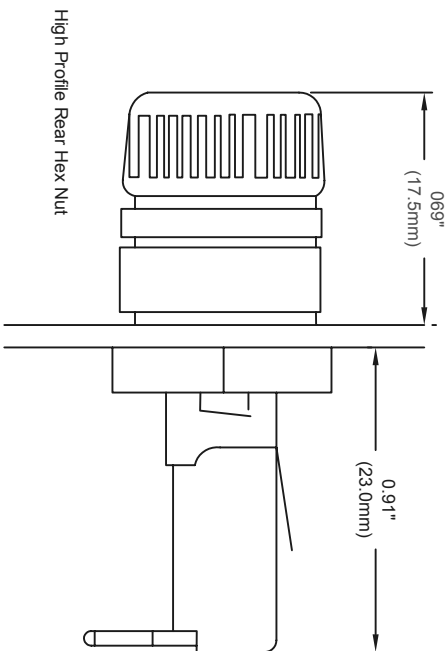
CARRIER TYPE: KNOB

FUSE TYPE: 1/4" x 1-1/4"

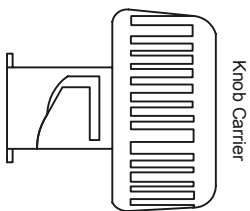
Terminal



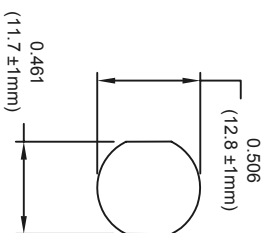
Dimensions : Inches (mm)



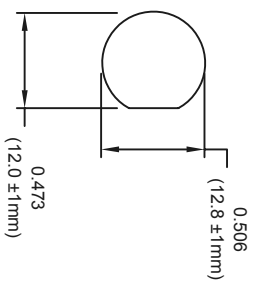
High Profile Rear Hex Nut



Knob Carrier



Mounting Hole



TOLERANCES:

UNLESS OTHERWISE SPECIFIED, DIMENSIONS ARE FOR REFERENCE PURPOSES ONLY.

DISCLAIMER:

ALL STATEMENTS AND TECHNICAL INFORMATION CONTAINED HEREIN ARE BASED UPON INFORMATION AND/OR TESTS WE BELIEVE TO BE ACCURATE AND RELIABLE. SINCE CONDITIONS OF USE ARE BEYOND OUR CONTROL, THE USER SHALL DETERMINE THE SUITABILITY OF THE PRODUCT FOR THE INTENDED USE AND ASSUME ALL RISK AND LIABILITY WHATSOEVER IN CONNECTION THEREWITH.

DRAWING TITLE:

Panel Mount Fuseholder

DRAWN BY:	DATE:
SHA	13-08-10
CHECKED BY:	DATE:
JAG	20-08-10
APPROVED BY:	DATE:
XXX	27-08-10

SIZE	DWG. NO.	ELECTRONIC FILE	REV
A	XXX	92N5193	A
SCALE:	NTS	U.O.M.: Millimeters	SHEET: 1 OF 1