

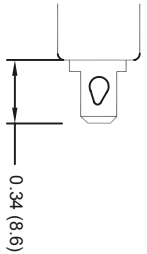
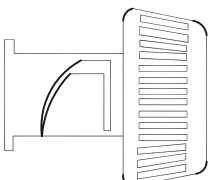
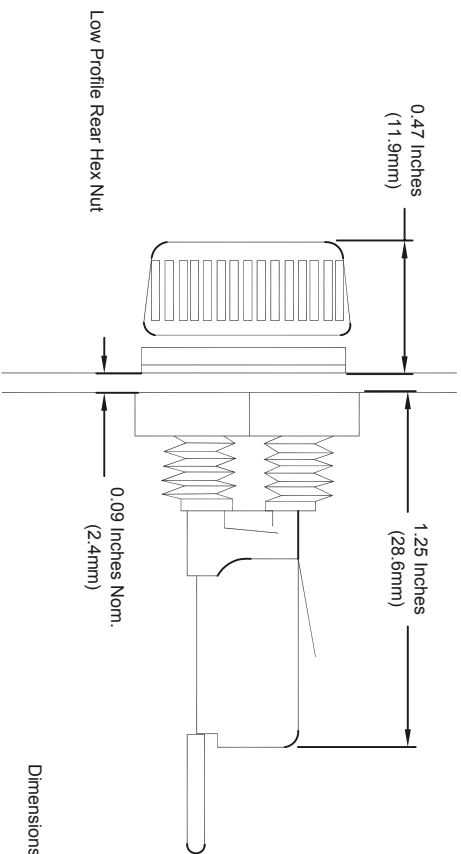
ALL RIGHTS RESERVED. NO PORTION OF THIS PUBLICATION, WHETHER IN WHOLE OR IN PART CAN BE REPRODUCED WITHOUT THE EXPRESS WRITTEN CONSENT OF SPC TECHNOLOGY.

SPC-F005.DWG

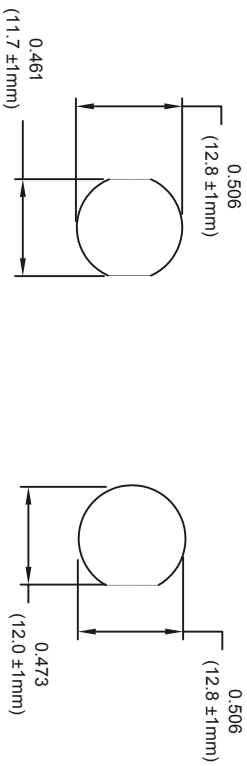
REVISIONS

DCP #	REV	DESCRIPTION	DRAWN	DATE	CHECKD	DATE	APPRVD	DATE
			VEE	18-08-10	JAG	21-08-10	XXX	01-09-10

DOC. NO. SPC-F005 * Effective: 7/8/02 * DCP No: 1398



Dimensions : Inches (mm)



Part Number Table

Description	Part Number
Panel Mount Fuseholder	MCHTB-221-RH

DISCLAIMER:

ALL STATEMENTS AND TECHNICAL INFORMATION CONTAINED HEREIN ARE BASED UPON INFORMATION AND/OR TESTS WE BELIEVE TO BE ACCURATE AND RELIABLE. SINCE CONDITIONS OF USE ARE BEYOND OUR CONTROL, THE USER SHALL DETERMINE THE SUITABILITY OF THE PRODUCT FOR THE INTENDED USE AND ASSUME ALL RISK AND LIABILITY WHATSOEVER IN CONNECTION THEREWITH.

TOLERANCES:

UNLESS OTHERWISE SPECIFIED, DIMENSIONS ARE FOR REFERENCE PURPOSES ONLY.

Agency Approvals: UL Recognized - Guide IZLT2, File E14853 20A (3/16" quick-connect 15A) at 250 VAC
 VDE - 10A at 250 VAC, 49890
 SEMKO - 10A at 250 VAC, 8945092, 9005230
 Electrical Data: Insulation resistance (per IEC #257) - 10,000 ohms at 500 VDC; Contact resistance (per IEC #257) - 0.005 ohms maximum at 1A; stand-off voltage (per IEC #257) - 480V/Mill at 125 in thickness.
 Environmental: Minimum/Maximum operating temperature -55°C to 85°C.
 Molded Components: High temperature, flame retardant, thermoplastic; UL Component Recognized: 94V0, mounting nut, spacer-black polycarbonate.
 Terminals: Tin-plated brass.
 Mounting: Withstands 15 to 20 lbs-ins torque to mounting nut when mounting Fuseholder to panel. Maximum panel thickness 0.300 inches.

CE logo denotes compliance with European Union Low voltage Directive (50-1000 VAC, 75-1500 VDC).

Dimensional Data:

Length: 1.69 (42.9) Plus In-Line Terminal
 Maximum Panel Thickness: 0.30 (7.62)
 Terminal: Solder or 3/6" Quick-Connect, In-Line
 Carrier Type: KNOB
 Fuse Type: 1/4" x 1-1/4"

DRAWN BY:		DATE:		DRAWING TITLE:	
VEE	18-08-10	Panel Mount Fuseholder			
CHECKED BY:		DATE:		SIZE DWG. NO.	
JAG	21-08-10	XXX			
APPROVED BY:		DATE:		SCALE: NTS	
XXX	01-09-10	U.O.M.: Millimeters		SHEET: 1 OF 1	

ELECTRONIC FILE	REV
92N5198	A